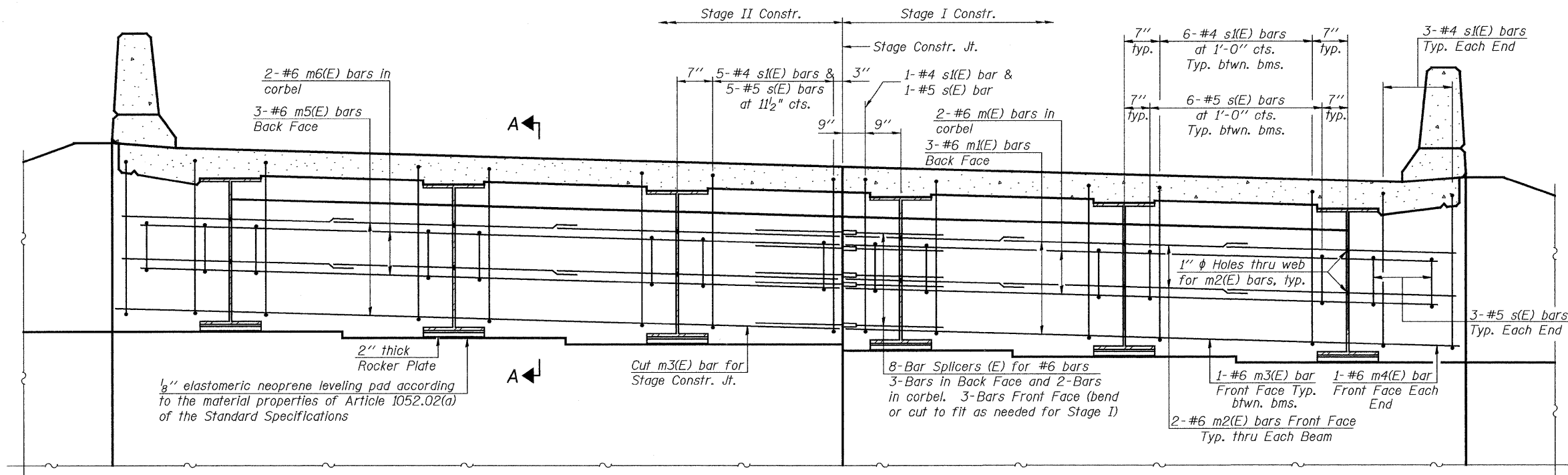
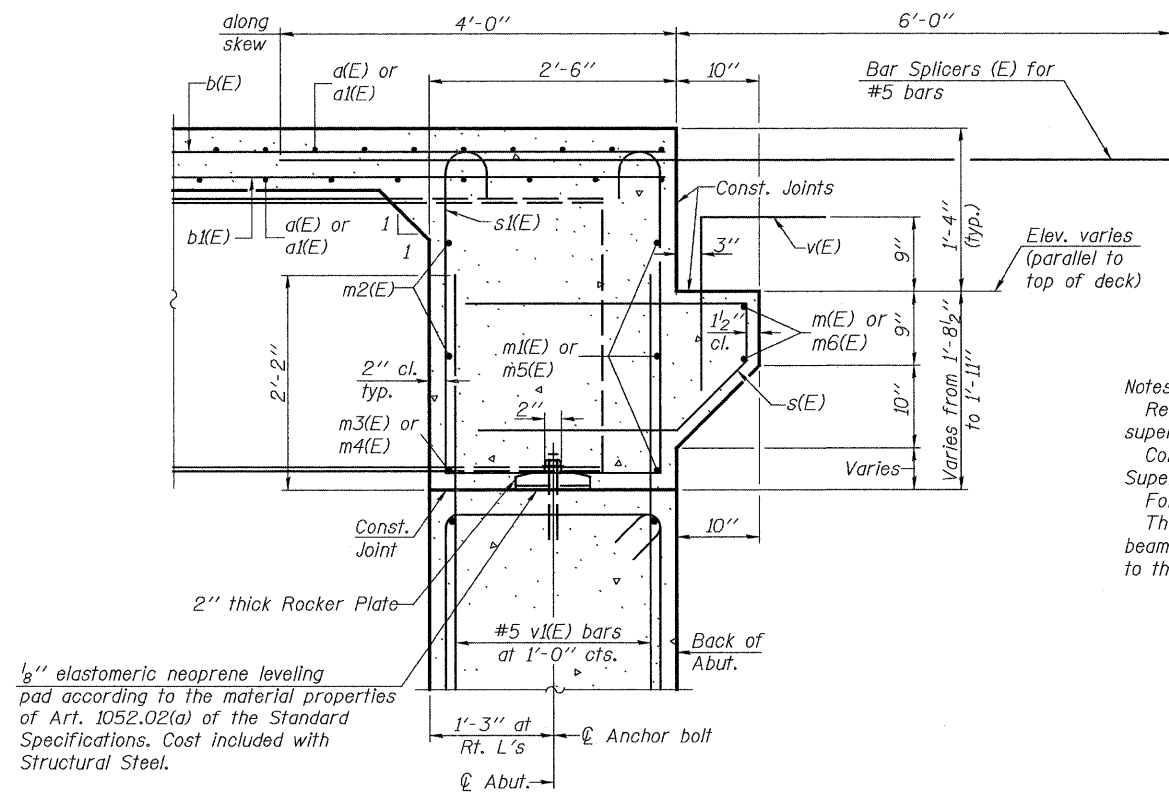


STATE OF ILLINOIS
DEPARTMENT OF TRANSPORTATION



DIAPHRAGM ELEVATION AT ABUTMENT



Notes:
Reinforcement bars in diaphragm are billed with superstructure on sheet 9 of 22.
Concrete in diaphragm is included with Concrete Superstructure on sheet 9 of 22.
For details of bars s(E) & s1(E) see sheet 9 of 22.
The s(E) and s1(E) bars shall be placed parallel to the beams. Spacing for these bars shall be at right angles to the beams.

MIN. BAR LAP
#6 bar = 2'-7"

SECTION A-A
Dimensions at right angles to abutment, except as shown.

INTEGRAL ABUTMENT
DIAPHRAGM DETAILS
ILLINOIS 96 OVER
FOX CREEK
STRUCTURE NO. 007-0028

DESIGNED: JDQ	DRAWN: PTR
CHECKED: DCD	CHECKED: DCD

SI-DS1 5-16-08

SHEET 8 OF 22	F.A.P. RTE. 304	SECTION 5A-BR	COUNTY CALHOUN	TOTAL SHEETS 60	SHEET NO. 31
	STA. 475+19.62			CONTRACT NO. 76886	
FED. ROAD DIST. NO. [ILLINOIS] FED. AID PROJECT					

FILE: J:\JDQ\10164 IL-96 Fox Creek-FINAL\1-FoxCreek\08superstr2.dgn USER: DCD DATE: 11/26/2008 10:40:37