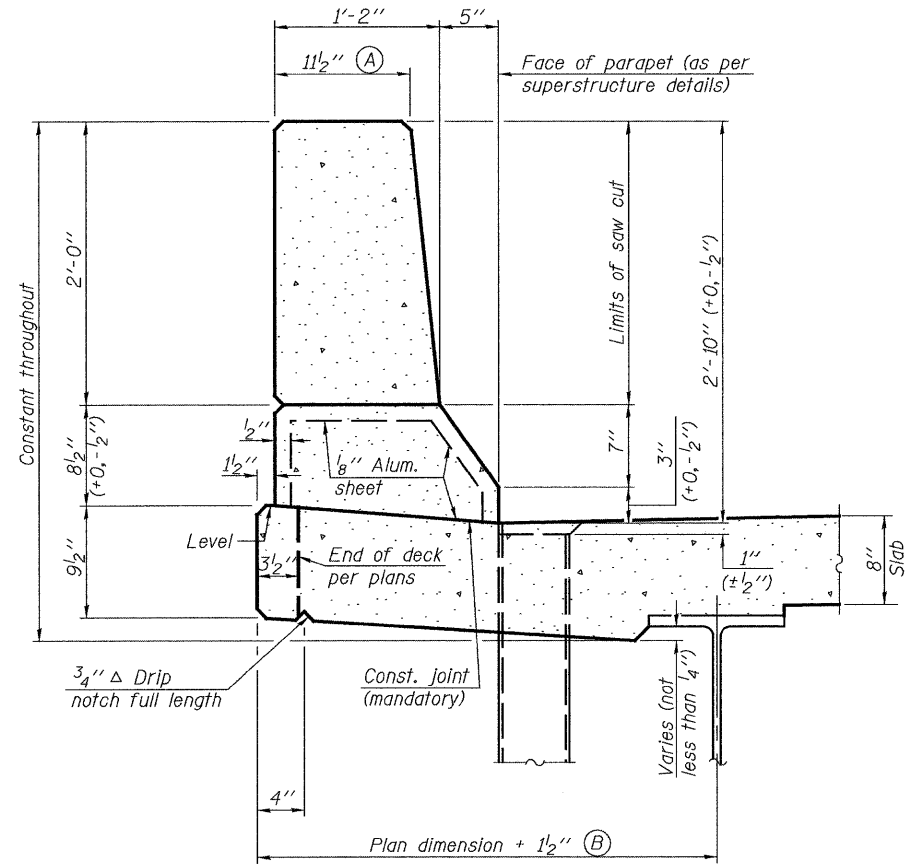
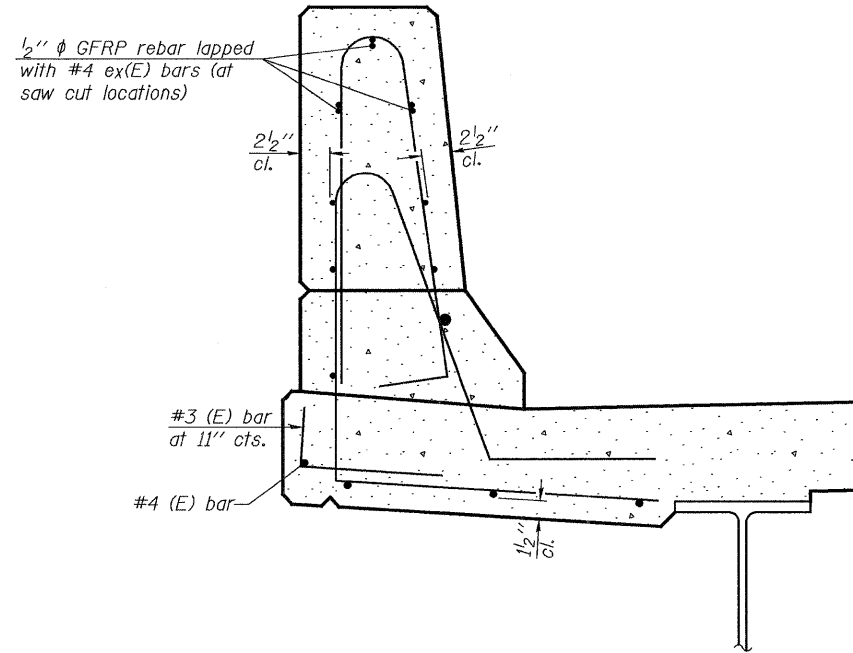


STATE OF ILLINOIS  
DEPARTMENT OF TRANSPORTATION



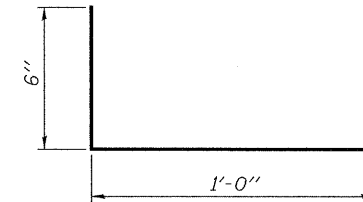
**SECTION**  
(Showing dimensions)



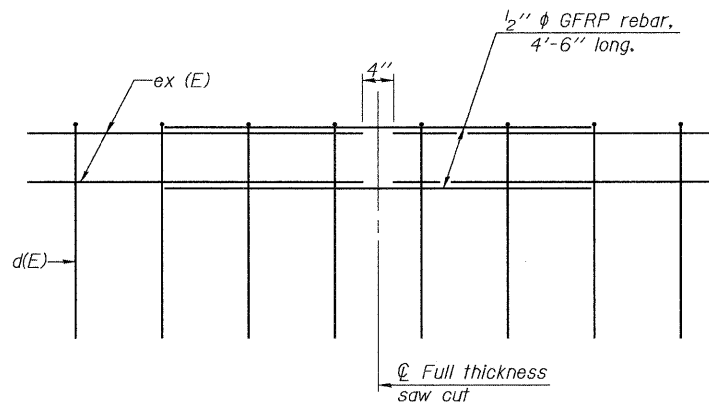
**SECTION**  
(Showing reinforcement clearances for slip forming and additional reinforcement bars)

**GENERAL NOTES**

All dimensions shall remain the same as shown on contract plans, except dimensions A and B which are to be revised as shown to provide additional clearance. Additional concrete needed to revise dimension A and B = 0.0165 cu. yds./ft. of parapet.  
Place aluminum sheet in curb portion at and near piers. Full thickness saw cut at all joint locations in lieu of cork joint filler.



**#3 (E) BAR**



**GFRP REBAR STIFFENING DETAIL**

(Place as shown in parapet section at each parapet joint location.)

**CONCRETE PARAPET SLIPFORMING OPTION**

ILLINOIS 96 OVER  
FOX CREEK  
STRUCTURE NO. 007-0028

SHEET 10 OF 22	F.A.P. RTE. 304	SECTION 5A-BR	COUNTY CALHOUN	TOTAL SHEETS 60	SHEET NO. 33
	STA. 475+19.62			CONTRACT NO. 76886	
FED. ROAD DIST. NO. ILLINOIS FED. AID PROJECT					

**JD** Johnson, Depp & Quisenberry  
CONSULTING ENGINEERS  
Springfield, Illinois

DESIGNED: JDQ	DRAWN: SJS
CHECKED: DCD	CHECKED: DCD

SFP-34

5-16-08