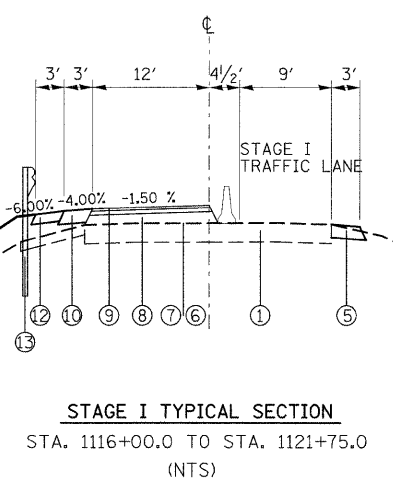


MATCHLINE 1116+00.00

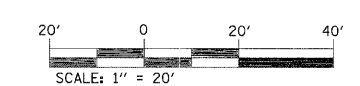
MATCHLINE 1121+75.00



STAGE I TYPICAL SECTION
STA. 1116+00.0 TO STA. 1121+75.0
(NTS)

- LEGEND**
- ① EXISTING PAVEMENT
 - ⑤ PROPOSED HOT-MIX ASPHALT BASE COURSE WIDENING 9"
 - ⑥ PROPOSED BITUMINOUS MATERIALS (PRIME COAT)
 - ⑦ PROPOSED AGGREGATE (PRIME COAT)
 - ⑧ PROPOSED HMA BINDER COURSE (VARIES FROM 3/4" TO 9/2")
 - ⑨ PROPOSED HMA SURFACE COURSE, 1 1/2"
 - ⑩ PROPOSED HMA SHOULDER, 8"
 - ⑫ PROPOSED AGGREGATE SHOULDER, TYPE B 6"
 - ⑬ PROPOSED GUARDRAIL

- LEGEND:**
- STRUCTURE REMOVAL
 - PAVEMENT REMOVAL
 - TEMPORARY CONCRETE BARRIER
 - IMPACT ATTENUATOR
 - INDUCTION LOOP DETECTOR
 - DRUM WITH STEADY BURNING LIGHT
 - SIGNALIZED TWO-WAY TRAFFIC LANE
 - TEMPORARY BRIDGE TRAFFIC SIGNAL
 - TYPE III BARRICADE



FILE NAME =	USER NAME = gelinh	DESIGNED -	REVISED -	STATE OF ILLINOIS DEPARTMENT OF TRANSPORTATION	SUGGESTED STAGE I CONSTRUCTION AND TRAFFIC CONTROL	F.A.P. RTE. =	SECTION =	COUNTY =	TOTAL SHEETS =	SHEET NO. =	
cr:\pw_work\pwidot\gelinh\dms51845\Stage	and Pvmf Mkgdgn	DRAWN -	REVISED -			805	126-BR-1	CLINTON	85	14	
	PLOT SCALE = 20,000' / IN.	CHECKED -	REVISED -			CONTRACT NO. 76976					
	PLOT DATE = 12/9/2008	DATE -	REVISED -			FED. ROAD DIST. NO. - ILLINOIS FED. AID PROJECT					