

PART OF THE SW 14 OF SECTION 11, T1N, R5W, OF THE 3RD PM, CLINTON COUNTY, ILLINOIS

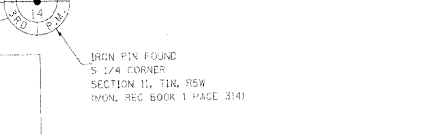
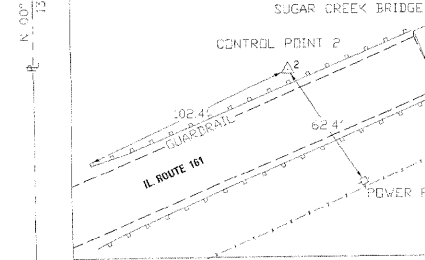
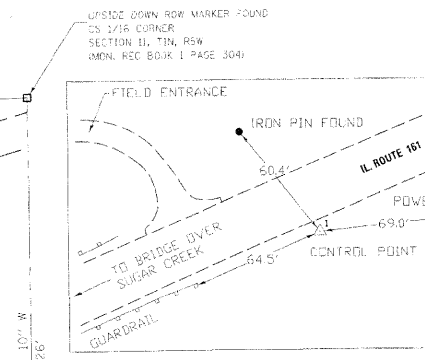
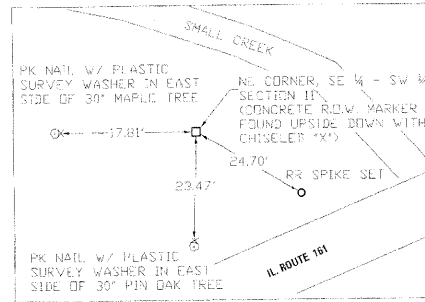
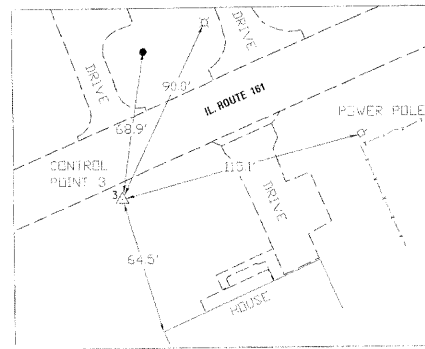
F.A.S. RTE.	SECTION	COUNTY	TOTAL SHEETS	SHEET NO.
805	126-BR-1	CLINTON	85	84
STA. 1107+70.70 TO STA. 1130+32.34				
FED. ROAD DIST. NO. 8 (ILLINOIS) FED. AID PROJECT				
CONTRACT NO. 76976				

COORDINATES AND BEARINGS SHOWN HEREON ARE BASED ON SURVEY CONTROL DATA AS PROVIDED BY THE ILLINOIS DEPARTMENT OF TRANSPORTATION.

POINT	STATION	OFFSET	NORTH	EAST
1	1124+56.40	14.1' RT	683,220.2064	451,483.5276
2	1117+03.00	22.89' LT	683,047.5148	450,879.9188
3	1104+13.47	20.19' RT	682,887.6030	450,714.9551
4	1107+70.70		682,653.9588	450,110.8421
5	1099+05.00		683,099.0399	451,159.1784
6	1121+52.14		683,541.3694	452,196.1111

DESCRIPTION	STATION	OFFSET	COORDINATE TABLE	
			NORTH	EAST
PROP. R.O.W. TP SET	1123+56.00	50.00' RT	683,227.6598	451,588.1095
PROP. R.O.W. TP SET	1125+00.00	50.00' RT	683,266.5171	451,726.0799
PROP. R.O.W. TP SET	1125+50.00	40.00' RT	683,215.3343	451,768.1467
PROP. R.O.W. TP SET	1115+28.76	45.00' RT	682,910.0252	450,830.7839
PROP. R.O.W. TP SET	1114+58.76	53.24' RT	682,835.7306	450,877.1526
PROP. R.O.W. TP SET	1120+00.88	50.28' RT	683,051.7896	451,268.9355
PROP. R.O.W. TP SET	1114+52.29	45.00' LT	682,962.7942	450,775.1142
PROP. R.O.W. TP SET	1122+40.23	40.00' LT	683,267.6951	451,451.8297
PROP. R.O.W. TP SET	1113+19.40	40.00' LT	682,905.6585	450,693.9217
EXIST. C.O.W. TP SET	1120+00.00	105.00' LT	683,259.8435	451,268.5297
EXIST. C.O.W. TP SET	1122+40.23	105.00' LT	683,227.1562	451,226.3209
PROP. R.O.W. TP SET	1120+50.00	55.00' RT	683,105.3462	451,314.1307
PROP. R.O.W. TP SET	1123+00.00	55.00' RT	683,203.4417	451,544.0812

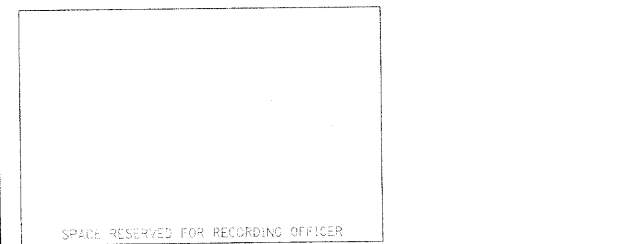
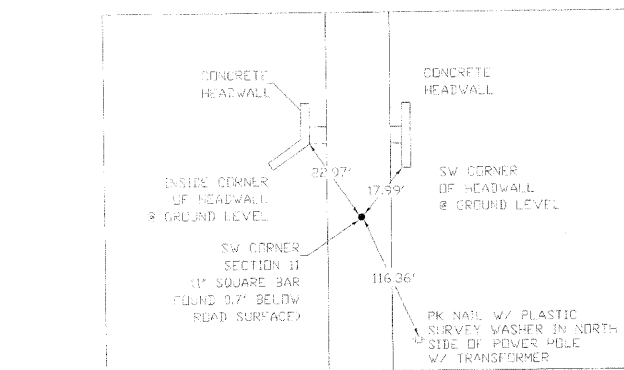
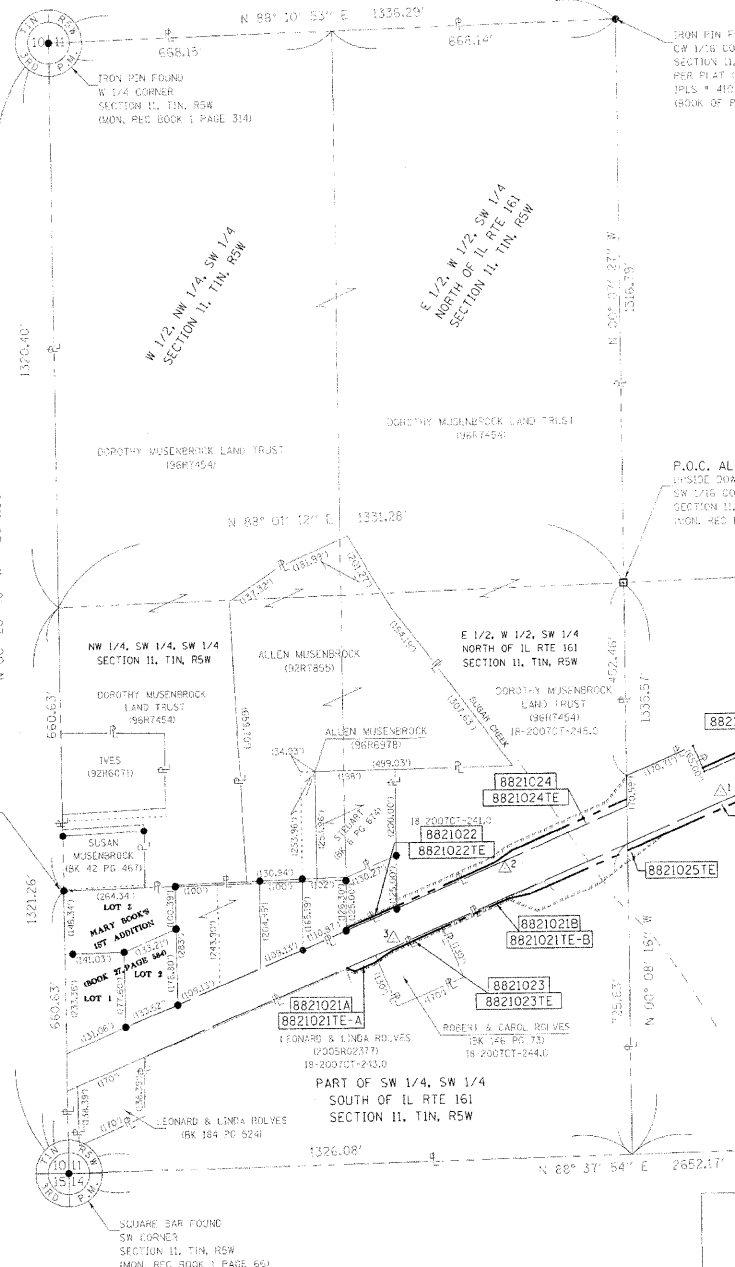
TOTAL HOLDING SKETCH



LEGEND

- EXISTING RIGHT OF WAY LINE
- PROPOSED RIGHT OF WAY LINE
- PROPOSED PERMANENT EASEMENT LINE
- SECTION LINE
- QUARTER SECTION LINE
- PROPERTY (DEED) LINE
- APPARENT PROPERTY LINE
- MEASURED DIMENSION
- RECORDED DIMENSION
- FOUND IRON PIPE OR IRON ROD AT CORNER UNLESS OTHERWISE NOTED
- SET 5/8 INCH IRON ROD WITH PLASTIC CAP IDENTIFIED BY SURVEYORS LICENSE NUMBER AT CORNER UNLESS OTHERWISE NOTED
- 1/2" SURVEY CONTROL UNLESS OTHERWISE NOTED
- SAME OWNERSHIP
- PK NAIL FOUND, SET BY OTHERS
- CONCRETE MONUMENT FOUND
- STAKING OF PROPOSED RIGHT OF WAY AND PERMANENT EASEMENT CORNERS, SET 5/8 INCH METAL ROD WITH DIVISION OF HIGHWAY SURVEY ALUMINUM CAP TO MONUMENT THE POSITION SHOWN, IDENTIFIED BY INSCRIPTION DATA AND SURVEYORS LICENSE NUMBER. (PROPOSED RIGHT OF WAY CORNERS SET IN CULTIVATED AREAS SHALL BE A MINIMUM OF 20 INCHES BELOW THE GROUND SURFACE).

DESCRIPTION	STATION	OFFSET	NORTH	EAST
SQUARE BAR FOUND	1112+07.29	70.00' LT	682,000.0628	450,501.7228
1/4" IRON CORNER			682,912.3259	450,204.1771
MARY BOOK'S ADD. SQUARE BAR FOUND			682,325.0750	449,944.9500
SW CORN. SECT. 11			684,966.6840	449,928.9660
1/4" W 1/4 CORNER			682,683.7910	450,092.9950
SW CORNER LOT 2				
MARY BOOK'S ADD. IRON PIN FOUND	1114+55.89	43.13' LT	682,959.7310	450,730.3360
IRON PIN FOUND			682,408.4030	452,596.3590
SW 1/4 CORN. SECT. 11			687,712.3060	451,267.9410
CONC. MON. FOUND			683,758.6480	452,590.7940
SW 1/16 CORN. SECT. 11				
CONC. MON. FOUND				
SW 1/16 CORN. SECT. 11				
IRON PIN FOUND	1113+68.04	147.57' LT	683,023.2945	450,605.5310
IRON PIN FOUND	1114+30.31	228.03' LT	683,024.4270	450,403.1330
IRON PIN FOUND	1122+73.84	132.03' LT	683,028.0890	450,507.3470
IRON PIN FOUND	1099+37.51	229.88' LT	683,078.9160	450,203.2450
1/4" W CORNER LOT 2			682,861.3140	450,081.3600
MARY BOOK'S ADD. IRON PIN FOUND	1114+40.55	38.30' LT	682,995.7120	450,729.1390
IRON PIN FOUND	1114+98.21	153.70' LT	683,080.7300	450,774.0290
1/4" W CORNER LOT 2	1109+193.02	296.20' LT	683,611.2690	450,203.2490
MARY BOOK'S ADD. 1/4" W CORNER LOT 2			683,005.6370	449,841.0660
MARY BOOK'S ADD. IRON PIN FOUND			683,006.2350	449,959.0990
IRON PIN FOUND			685,029.0690	451,264.5580
SW 1/16 CORN. SECT. 11				
PROP. R.O.W. TP SET	1125+50.00	40.00' LT	683,398.9185	451,736.7556
PROP. R.O.W. TP SET	1125+00.00	50.00' LT	683,378.4974	451,686.8417
PROP. R.O.W. TP SET	1122+40.23	50.00' LT	683,276.5671	451,447.9019
PROP. R.O.W. TP SET	1120+14.50	45.00' LT	683,205.5397	451,268.6603
PROP. R.O.W. TP SET	1117+50.00	55.00' LT	683,088.2098	450,955.0280
PROP. R.O.W. TP SET	1117+00.00	45.00' LT	683,059.9926	450,952.9617
PROP. R.O.W. TP SET	1113+20.61	45.00' LT	682,911.1201	450,693.9565
PROP. R.O.W. TP SET	1112+46.39	40.00' RT	682,819.5130	450,605.8675
PROP. R.O.W. TP SET	1113+00.00	55.00' RT	682,811.0595	450,624.2791
PROP. R.O.W. TP SET	1113+50.00	55.00' RT	682,810.6786	450,670.2692
PROP. R.O.W. TP SET	1114+00.00	45.00' RT	682,893.4958	450,712.3355
PROP. R.O.W. TP SET	1117+00.00	45.00' RT	682,877.2104	450,388.2761
PROP. R.O.W. TP SET	1117+50.00	55.00' RT	682,867.6315	451,038.1901
PROP. R.O.W. TP SET	1120+00.88	55.00' RT	683,086.0714	451,268.9478



REVISION	DATE	DESCRIPTION

ILLINOIS DEPARTMENT OF TRANSPORTATION
PLAT OF HIGHWAYS
 FAS ROUTE 805 (IL 161)
 SECTION 126-BR-1
 CLINTON COUNTY
 JOB NO. R-98-C21-08
 STATION 1107+70.70 TO STATION 1130+32.34

17625 Mockingbird Road, P.O. Box 311
 Nashville, Illinois 62263
 Ph. 618-478-9000 Fax 618-478-9001
 e-mail: api@apisurvey.com
 IDPR Design Firm License No. 184-001303

ILLINOIS DEPARTMENT OF TRANSPORTATION
 DIVISION OF HIGHWAYS/REGION 5/DISTRICT 8
 1102 EASTPORT PLAZA DRIVE
 COLLINGSVILLE, ILLINOIS 62234-6198
 SHEET 1 IS A COVER SHEET