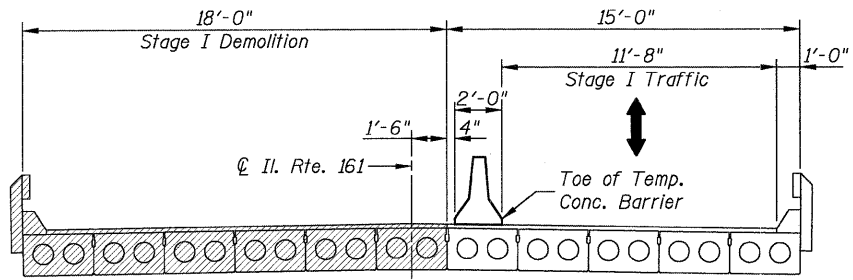
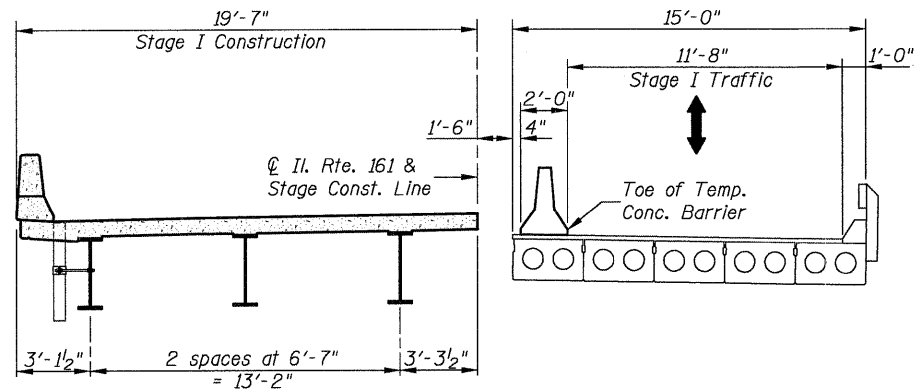


0140078_76976_03_STAG.DGN DEC. 8, 2008

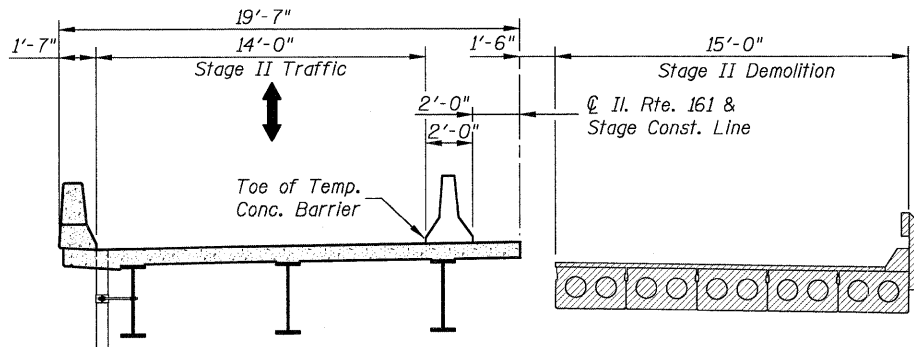
STATE OF ILLINOIS
DEPARTMENT OF TRANSPORTATION



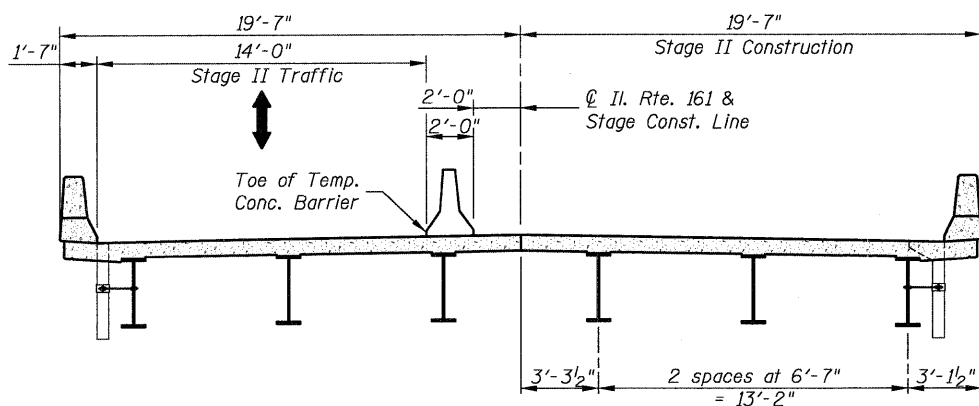
STAGE I DEMOLITION
(Looking East)



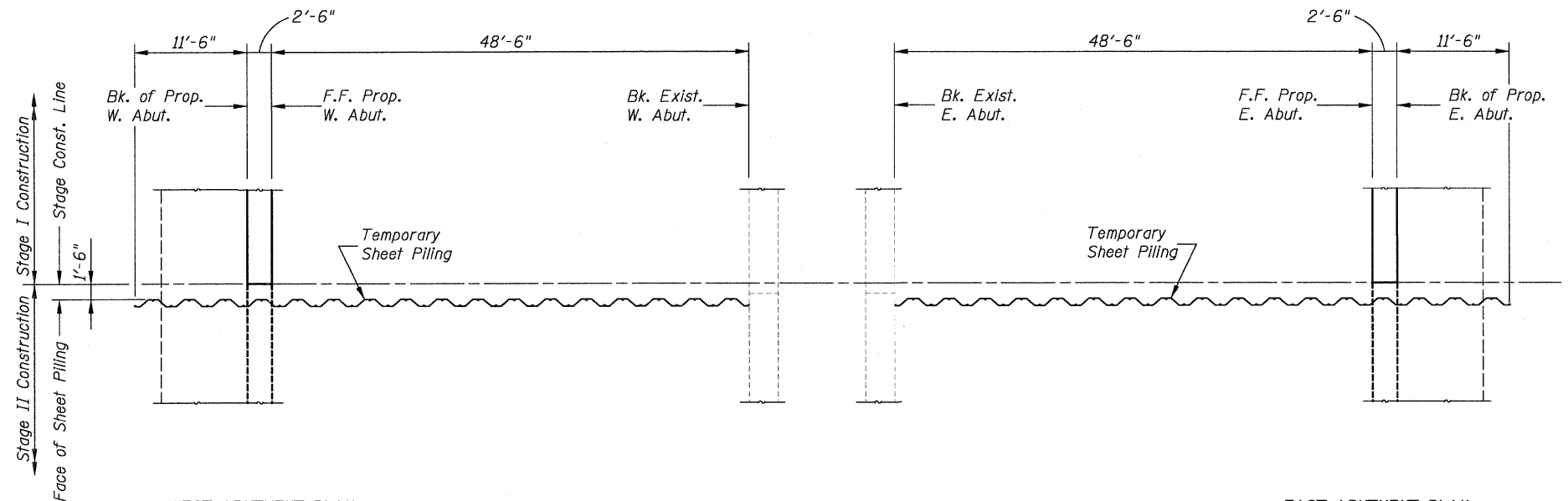
STAGE I CONSTRUCTION
(Looking East)



STAGE II DEMOLITION
(Looking East)



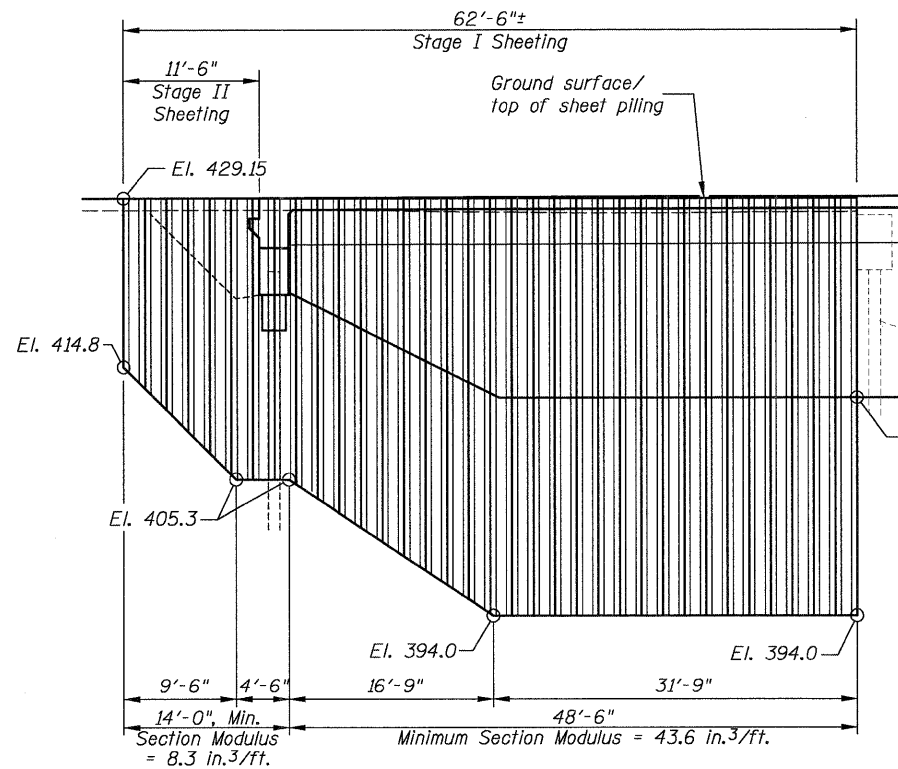
STAGE II CONSTRUCTION
(Looking East)



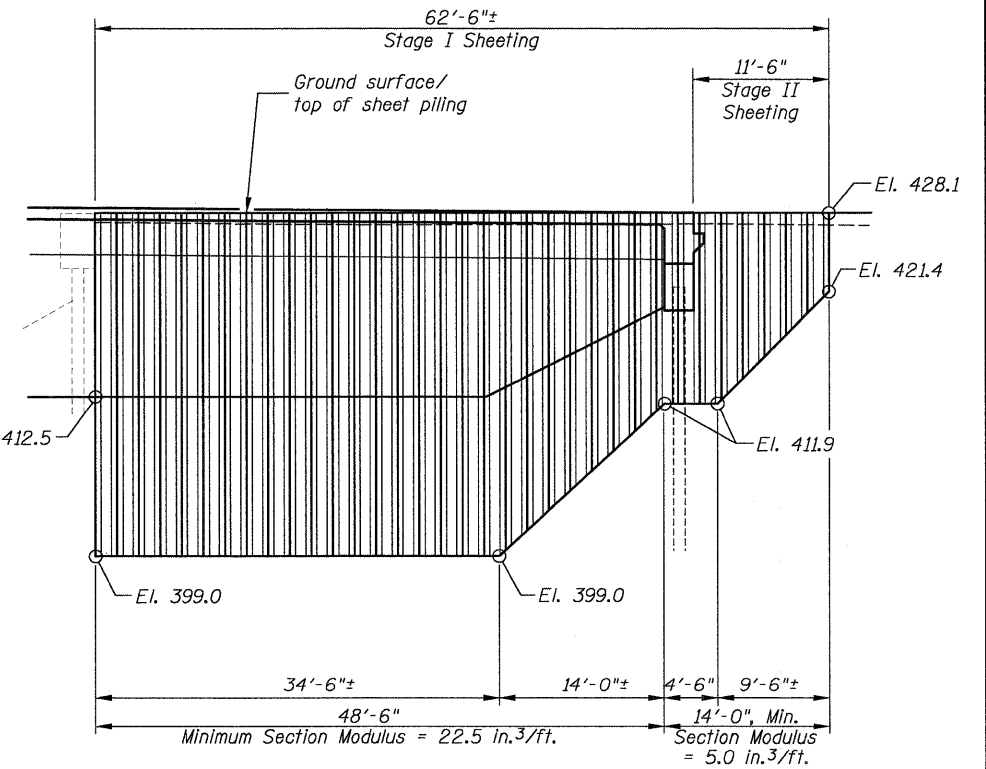
WEST ABUTMENT PLAN

EAST ABUTMENT PLAN

TEMPORARY SHEET PILING PLAN



WEST ABUTMENT ELEVATION



EAST ABUTMENT ELEVATION

TEMPORARY SHEET PILING ELEVATION

DESIGNED	B.G.H.
CHECKED	L.D.G.
DRAWN	K.H.L.
CHECKED	B.G.H.

NOTES

If the Contractor chooses to alter the temporary cantilevered sheet piling design requirements shown on the plans, a design submittal, including plan details and calculations, will be required for review and acceptance by the Engineer.

SHEET NO. 3	F.A.P. RTE.	SECTION	COUNTY	TOTAL SHEETS	SHEET NO.
	805	126-BR-1	CLINTON	85	34
34 SHEETS		S.N. 014-0078		CONTRACT NO. 76976	
FED. ROAD DIST. NO.		ILLINOIS FED. AID PROJECT			