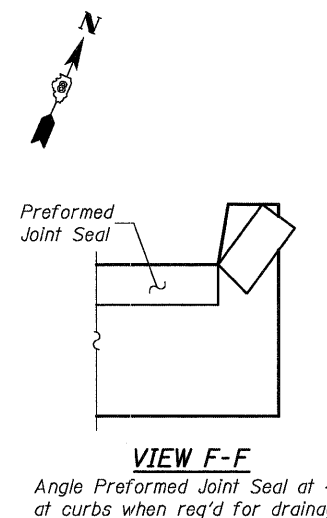
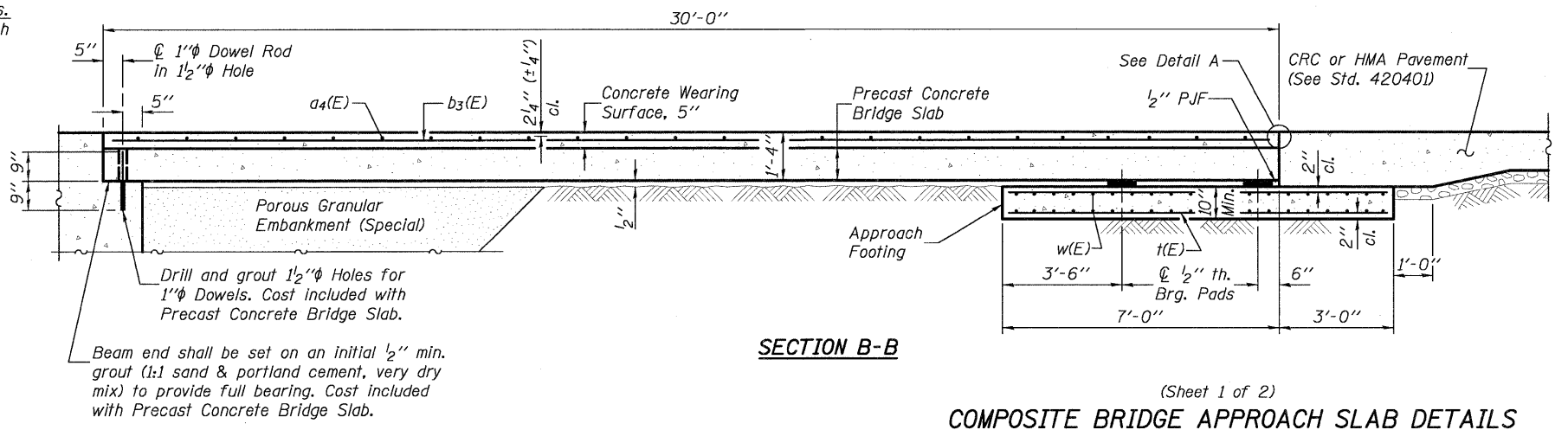
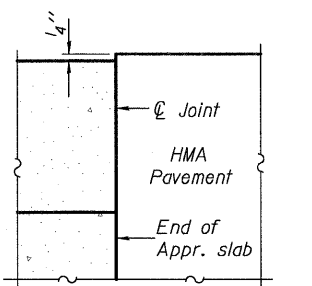
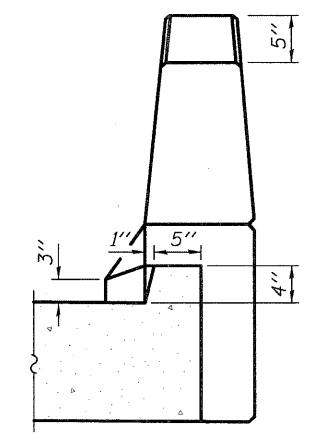
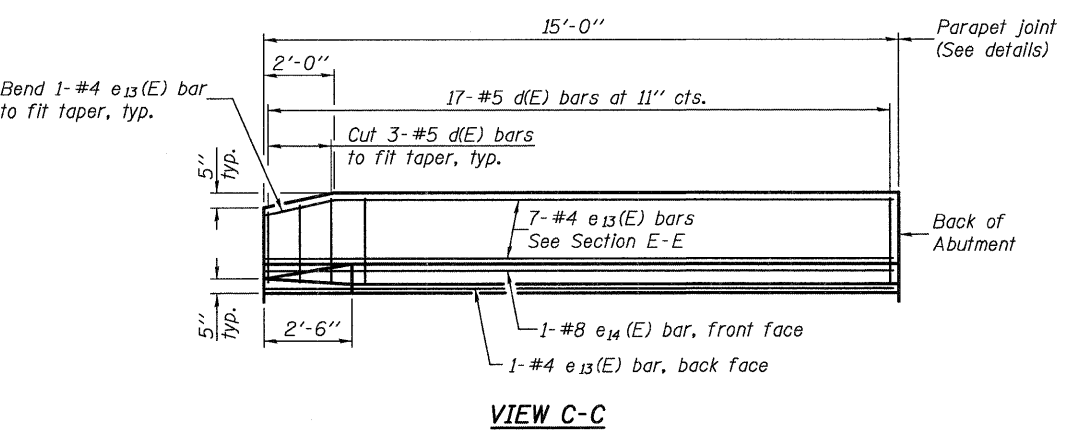
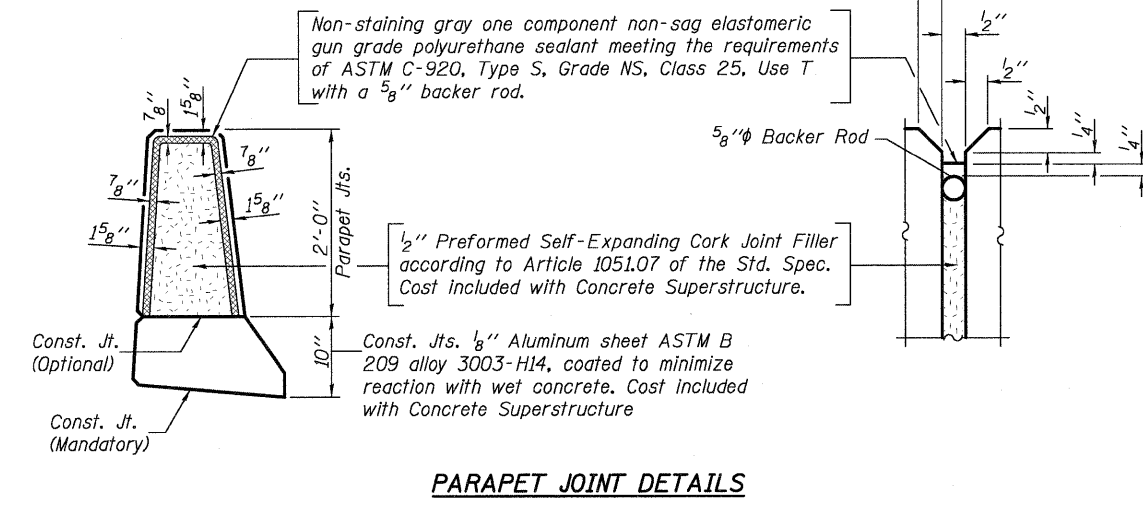
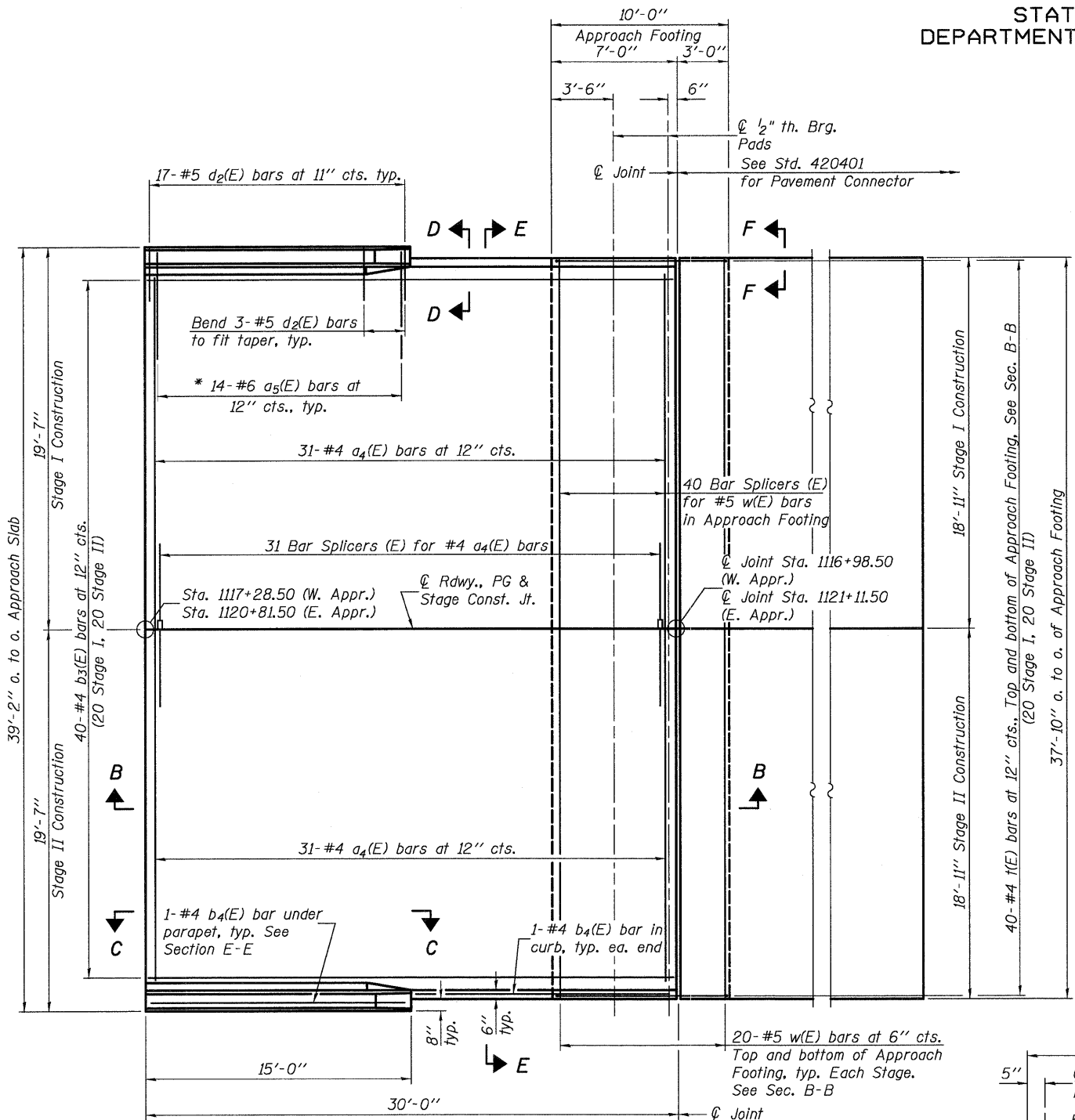


0140078 76976 13 APDT.DGN DEC. 8, 2008

STATE OF ILLINOIS  
DEPARTMENT OF TRANSPORTATION

Notes:  
a<sub>4</sub>(E), a<sub>5</sub>(E), and w(E) bar spacings measured perpendicular to  $\phi$  Roadway.



DESIGNED	B.G.H.
CHECKED	L.D.G.
DRAWN	K.H.L.
CHECKED	B.G.H.

Note:  
The Approach Footing maximum applied service bearing pressure (Q<sub>max</sub>) = 2.0 ksf.

(Sheet 1 of 2)  
**COMPOSITE BRIDGE APPROACH SLAB DETAILS**

SHEET NO. 13 34 SHEETS	F.A.P. RTE.	SECTION	COUNTY	TOTAL SHEETS	SHEET NO.
	805	126-BR-1	CLINTON	85	44
S.N. 014-0078			CONTRACT NO. 76976		
FED. ROAD DIST. NO.		ILLINOIS	FED. AID PROJECT		

H.M. & G. NO. 6020.131