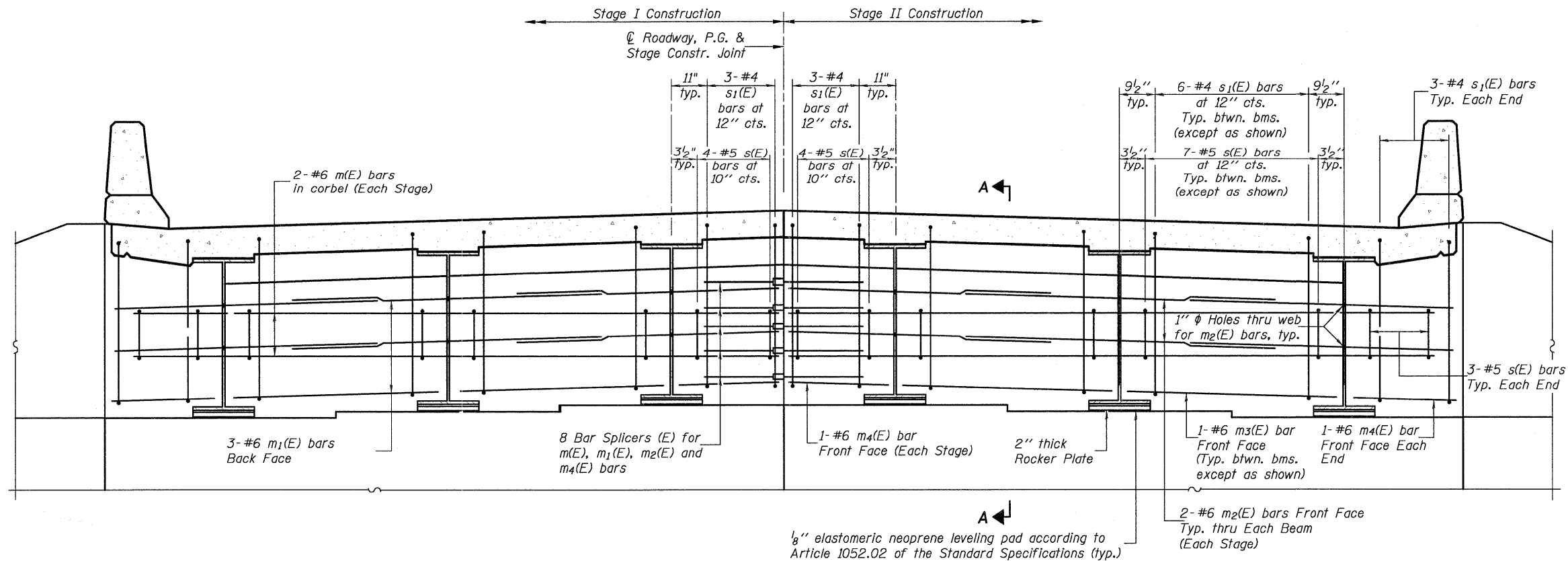


04/0078.76976_15.DIAP.DGN NOV. 21, 2008

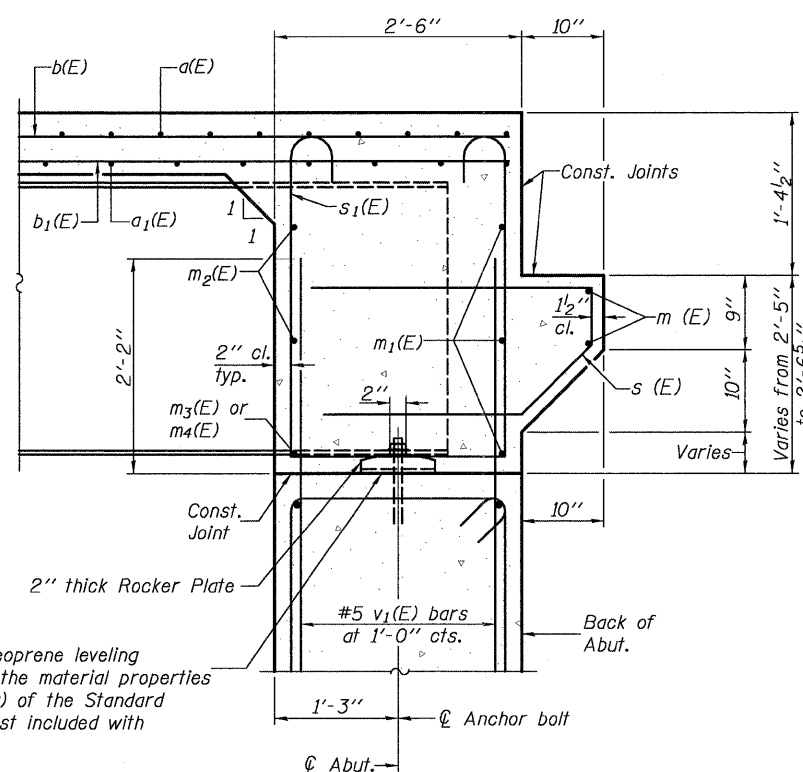
STATE OF ILLINOIS
DEPARTMENT OF TRANSPORTATION



DIAPHRAGM ELEVATION AT EAST ABUTMENT
(Looking East)

Notes:
Reinforcement bars in diaphragm are billed with superstructure on sheet 12 of 34.
Concrete in diaphragm is included with Concrete Superstructure on sheet 12 of 34.
For details of bars s(E) & s1(E) see sheet 12 of 34.
The s(E) and s1(E) bars shall be placed parallel to the beams. Spacing for these bars shall be at right angles to the beams.

MIN. BAR LAP
#6 bar = 2'-7"



SECTION A-A

DESIGNED	B.G.H.
CHECKED	L.D.G.
DRAWN	K.H.L.
CHECKED	B.G.H.

INTEGRAL ABUTMENT DIAPHRAGM DETAILS

SHEET NO. 15	F.A.P. RTE.	SECTION	COUNTY	TOTAL SHEETS	SHEET NO.
	805	126-BR-1	CLINTON	85	46
34 SHEETS	S.N. 014-0078		CONTRACT NO. 76976		
FED. ROAD DIST. NO. - ILLINOIS FED. AID PROJECT					

H.M. & G. NO. 6020.131