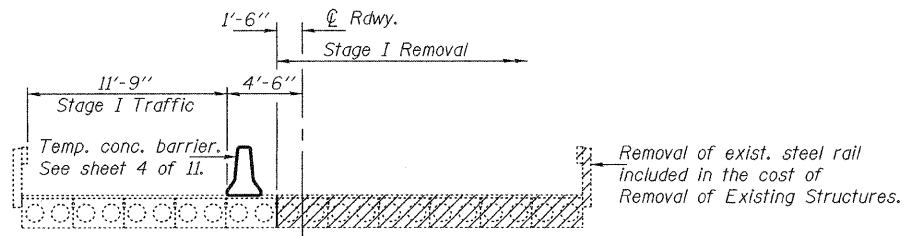
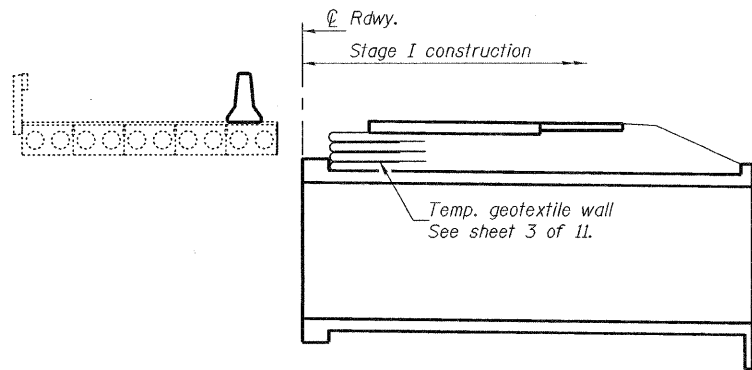


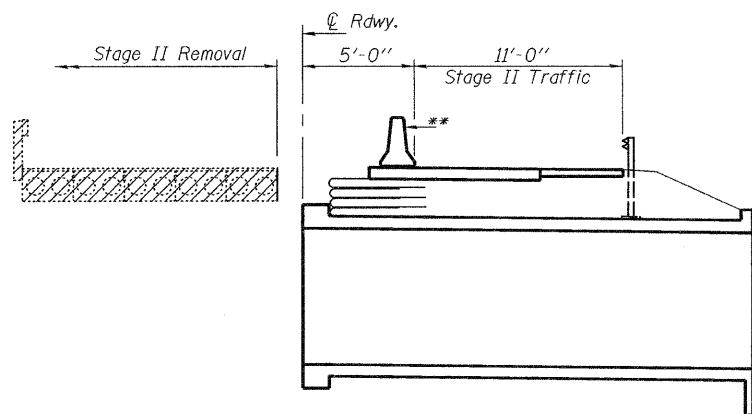
STATE OF ILLINOIS  
DEPARTMENT OF TRANSPORTATION



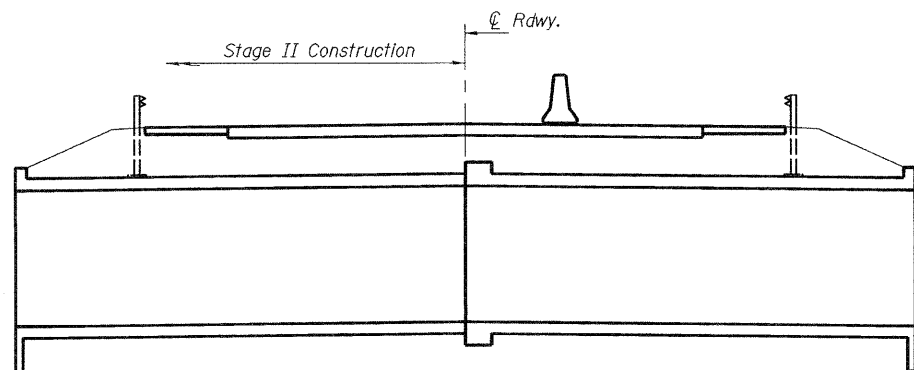
**STAGE I REMOVAL**



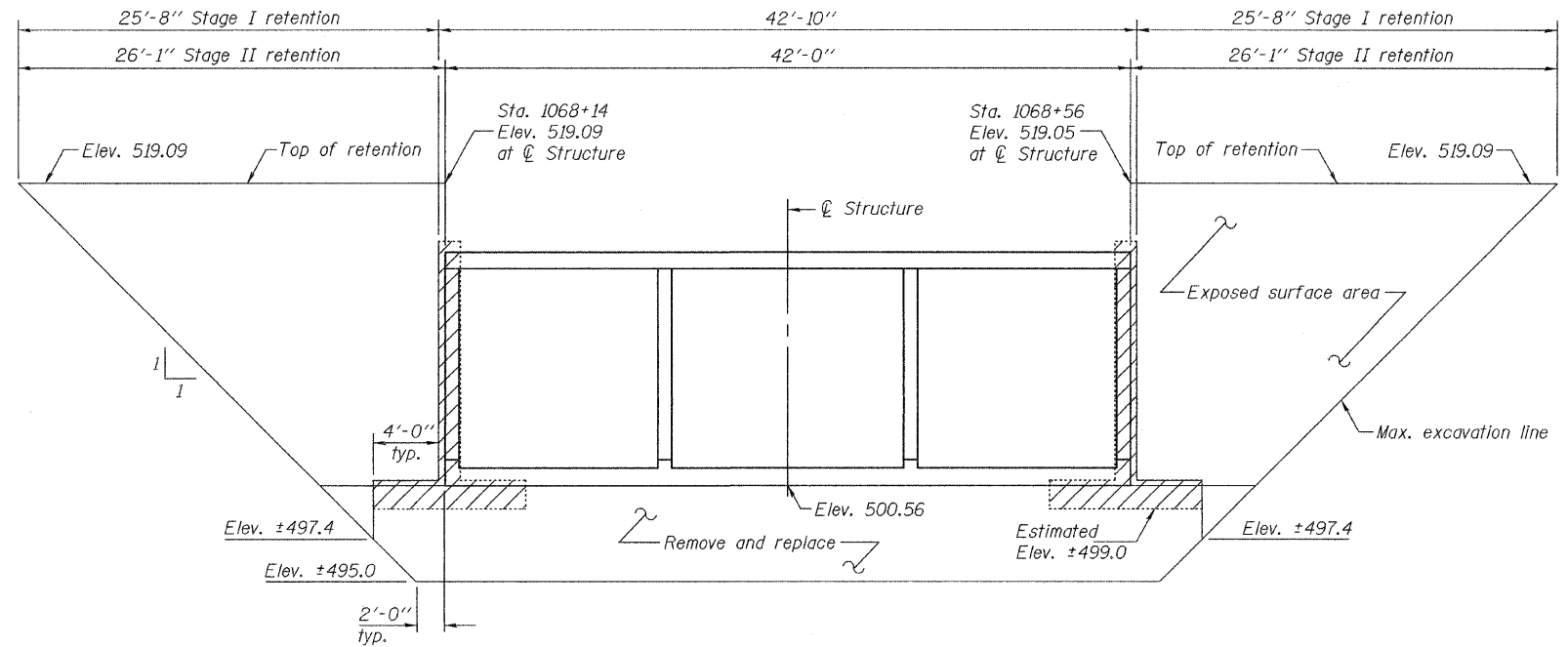
**STAGE I CONSTRUCTION**



**STAGE II REMOVAL**



**STAGE II CONSTRUCTION**



**TEMPORARY SOIL RETENTION SYSTEM**  
(Looking North)

A cantilevered sheet piling design does not appear feasible and additional members or other retention systems may be necessary. The Contractor shall submit a temporary soil retention system design including plan details and calculations for review and acceptance by the Engineer.

\*\*The temporary concrete barrier next to Stage II Traffic within the limits of end to end of the Temporary Soil Retention System shall be anchored with 3-1"  $\phi$  anchor pins per section of barrier on the traffic side as shown on Highway Standard 704001. Holes in the pavement shall be filled according to Std. Spec's. Section 704. Cost of anchoring and filling shall be included with Temporary Concrete Barrier.

Notes: Hatched areas indicate removal of existing structures.  
For quantity of temporary concrete barrier, see Roadway Plans.  
All cross sections are looking east.

DESIGNED	Jay D. Edwards
CHECKED	Mike D. Rolape
DRAWN	h.f. duong
CHECKED	JDE/MDR

Jan 15, 2009  
EXAMINED *Thomas J. Donagalli*  
PASSED *Rolap E. Rolape*  
ENGINEER OF BRIDGES AND STRUCTURES

**STAGE CONSTRUCTION DETAILS &  
SOIL RETENTION SYSTEM  
STRUCTURE NO. 031-2012**

SHEET NO. 2	F.A.P. RTE.	SECTION	COUNTY	TOTAL SHEETS	SHEET NO.
	761	104-BR-2	GREENE	82	25
11 SHEETS	CONTRACT NO. 76987				
FED. ROAD DIST. NO. ILLINOIS FED. AID PROJECT					