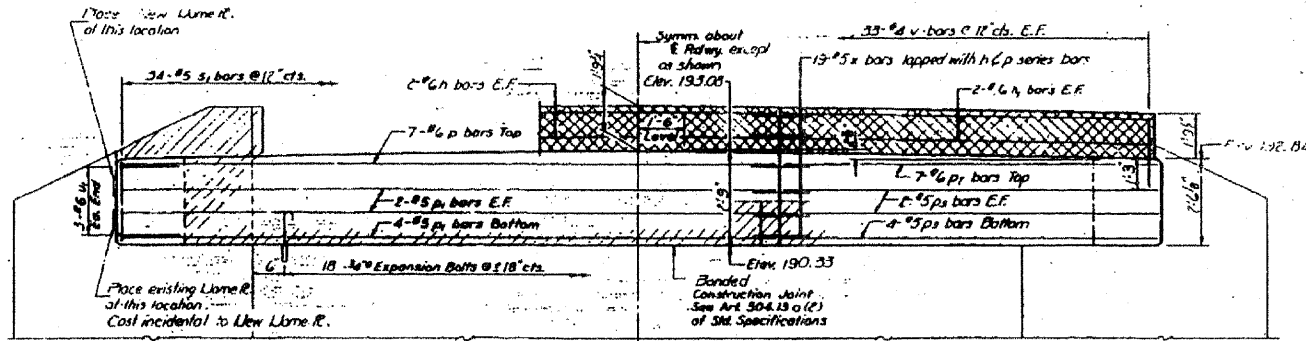
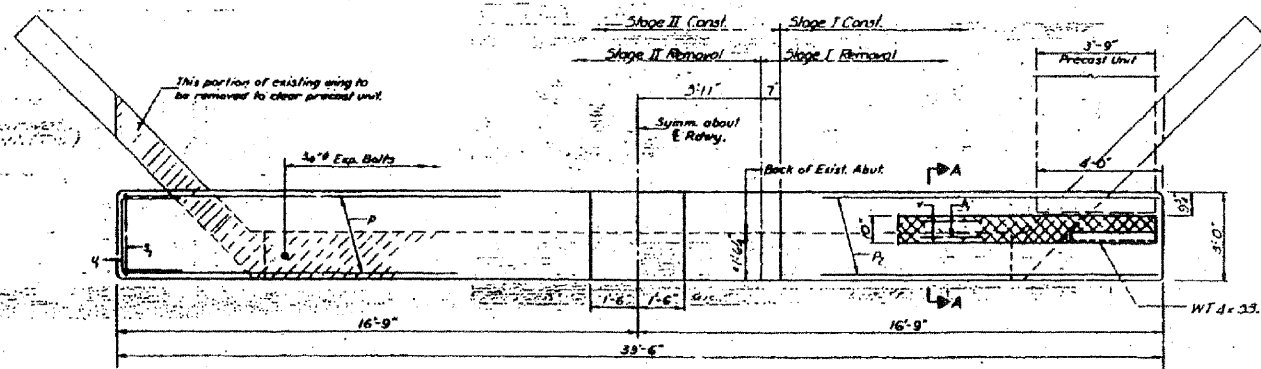


STATE OF ILLINOIS  
DEPARTMENT OF TRANSPORTATION

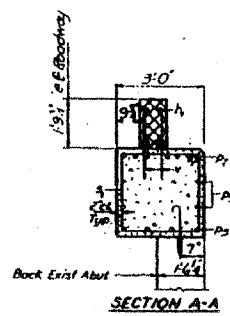
DATE	NO.	BY	REVISION
12/18/2008	02	herbaugh	1.0



ELEVATION



PLAN

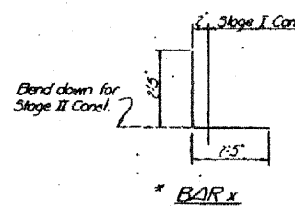
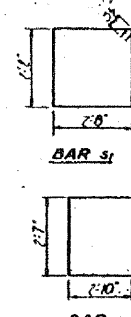


SECTION A-A

NOTES:  
Hatched area indicates Concrete Removal. Reinforcement extending into removed area shall be cleaned and incorporated into the new construction.  
Cross hatched area shall be poured after beams are in place.  
Expansion bolts shall be anchored in sound concrete. All edges shall have standard 3/4\"/>

BILL OF MATERIAL

Bar	No.	Size	Length	Shape
n	4	#6	11'-0"	—
h	4	#6	11'-0"	—
p	7	#6	11'-0"	—
q	0	#5	11'-0"	—
pr	7	#6	11'-0"	—
ps	8	#5	11'-0"	—
st	34	#5	8'-7"	□
u	5	#6	8'-7"	—
x	19	#5	11'-0"	L
y	44	#4	11'-0"	L
Class II Concrete				Cu Wt. 11.6
Reinforcement Bars				Lbs. 1490
Expansion Bolts 3/4"				Each 18
Concrete Removal				Cu Wt. 4.8



\* Bars shall conform to the requirements of AASHTO M-31 or M-53 except the minimum yield strength shall be not less than 33,000 psi, nor more than 43,000 psi.

DESIGNED: *[Signature]*  
DRAWN: *[Signature]*  
CHECKED: *[Signature]*  
DATE: 12/18/2008

WEST ABUTMENT  
721 RT. 761 SEC 104 BR-1  
GREENE COUNTY  
STA. 1068+35.00

FOR INFORMATION ONLY

FILE NAME =	USER NAME = herbaugh	DESIGNED -	REVISED -	STATE OF ILLINOIS DEPARTMENT OF TRANSPORTATION	STAGE CONSTRUCTION DETAILS (SN 031-2012)	F.A.P. RTE.	SECTION	COUNTY	TOTAL SHEETS	SHEET NO.	
ct:\pe\work\NWIDOT\HARBAUGH\RD\dms51889\	12/15/08a.dgn	DRAWN -	REVISED -			761	104-BR-2	GREENE	82	36	
PLOT SCALE = 1/8" = 1'-0"		CHECKED -	REVISED -			CONTRACT NO. 76987					
PLOT DATE = 12/18/2008		DATE -	REVISED -			SCALE: NTS	SHEET NO. 2 OF 3 SHEETS	STA.	TO STA.	FED. ROAD DIST. NO.	ILLINOIS FED. AID PROJECT