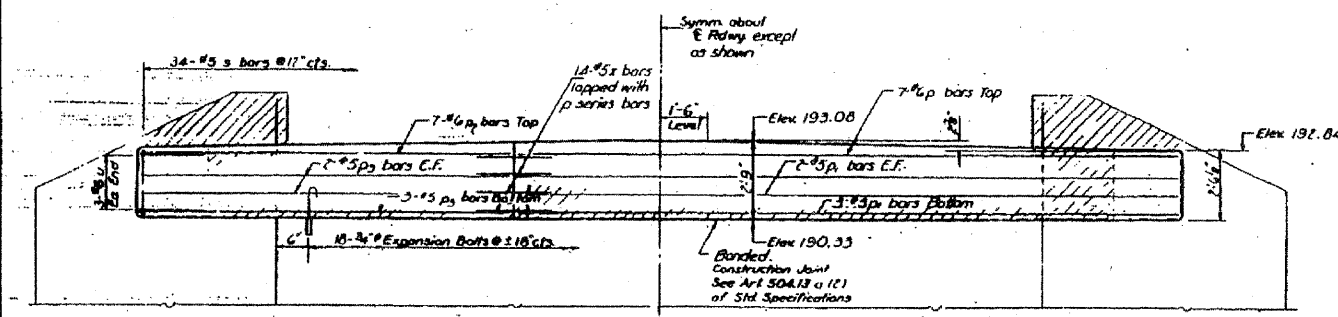
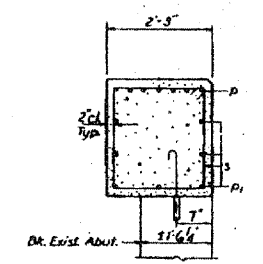


STATE OF ILLINOIS  
DEPARTMENT OF TRANSPORTATION

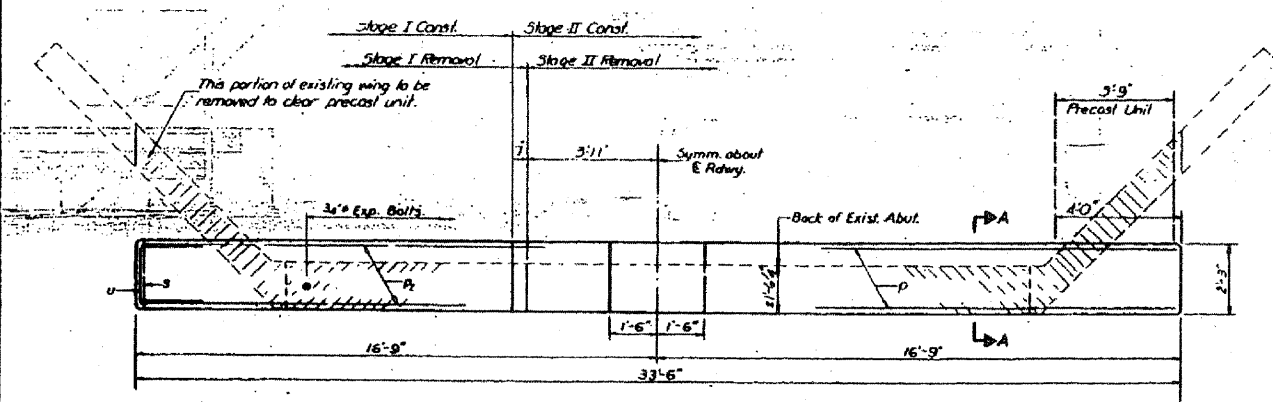
DATE	BY	CHKD	DATE	SHEET NO.
12/10/08	REY	Green	23	13



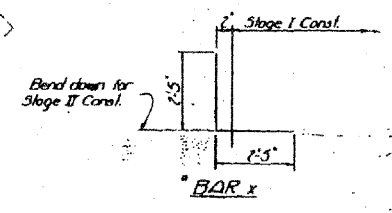
ELEVATION



SECTION A-A



PLAN



\* x Bars shall conform to the requirements of AASHTO M-31 or M-53 except the minimum yield strength shall be not less than 33,000 psi nor more than 45,000 psi.

**BILL OF MATERIAL**

Bar	No.	Size	Length	Quantity
A	7	1/2"	11'-0"	
B	7	3/8"	5'-0"	
PL	7	2/4"	15'-0"	
P1	7	2/4"	15'-0"	
J	24	2/4"	3'-7"	
V	6	1/2"	7'-6"	
X	14	2/4"	4'-0"	
Concrete				7.2
Reinforcement Bars				10.50
Expansion Bolts				19
Concrete Adhesive				3.1

DESIGNED: J. M. ...  
DRAWN: R. E. ...  
CHECKED: REY

**NOTE**  
Hatched area indicates Concrete Removal. Reinforcement extending into removed area shall be cleaned and incorporated into the new construction.  
Expansion bolts shall be anchored in sound concrete. All edges shall have standard 3/4" chamfers except as noted.

EAST ABUTMENT  
EA RT 761 SEC 104BR-1  
GREENE COUNTY  
STA 1060+35.00

0024

FOR INFORMATION ONLY

FILE NAME =	USER NAME = herbaughd	DESIGNED -	REVISED -	STATE OF ILLINOIS DEPARTMENT OF TRANSPORTATION	STAGE CONSTRUCTION DETAILS (SN 031-2012)	F.A.P. RTE.	SECTION	COUNTY	TOTAL SHEETS	SHEET NO.	
ca:\pwwork\pwwork\HARBALUGH\RD\dms51809\...	tr01506.dgn	DRAWN -	REVISED -			761	104-BR-2	GREENE	82	37	
PLOT SCALE = 100.0000 / IN.		CHECKED -	REVISED -			SCALE: NTS		SHEET NO. 3 OF 3 SHEETS		STA.	TO STA.
PLOT DATE = 12/10/2008		DATE	REVISED					CONTRACT NO. 76987		FED. ROAD DIST. NO. ILLINOIS FED. AID PROJECT	