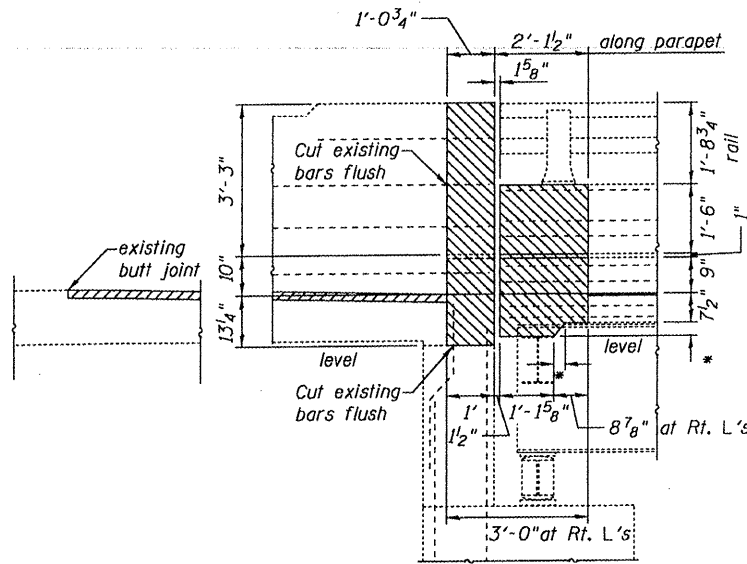


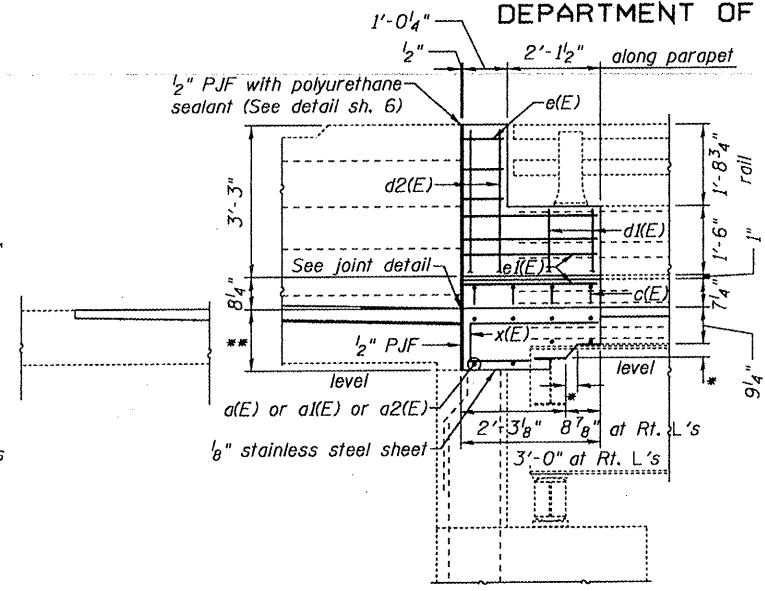
STATE OF ILLINOIS  
DEPARTMENT OF TRANSPORTATION

\* Varies 3 1/2" (Bm7) - 9" (C) - 5 3/4" (Bm1) WB  
Varies 3 5/8" (Bm1) - 8" (C) - 4 3/4" (Bm6) EB

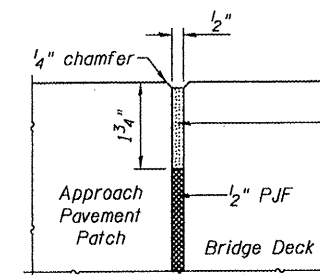
\*\* Varies 13 1/4" (outside gutter) to 18" (C) to 14 1/2" (median gutter)



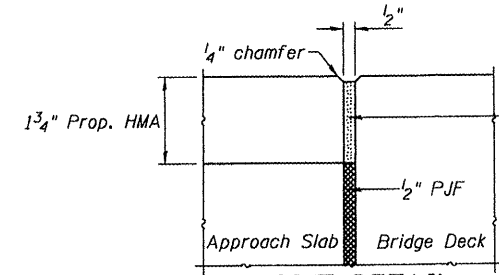
SECTION A-A  
Sidewalk side (N. side of N. bridge)



SECTION B-B  
Sidewalk side (N. side of N. bridge)

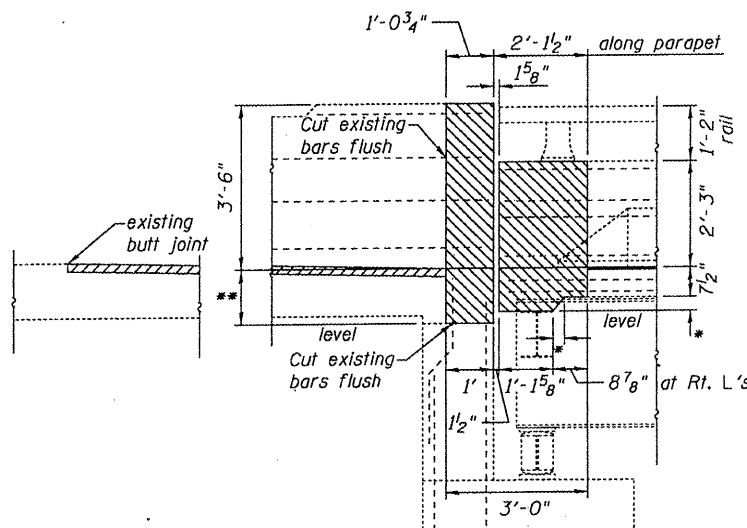


JOINT DETAIL  
(SE Approach only)

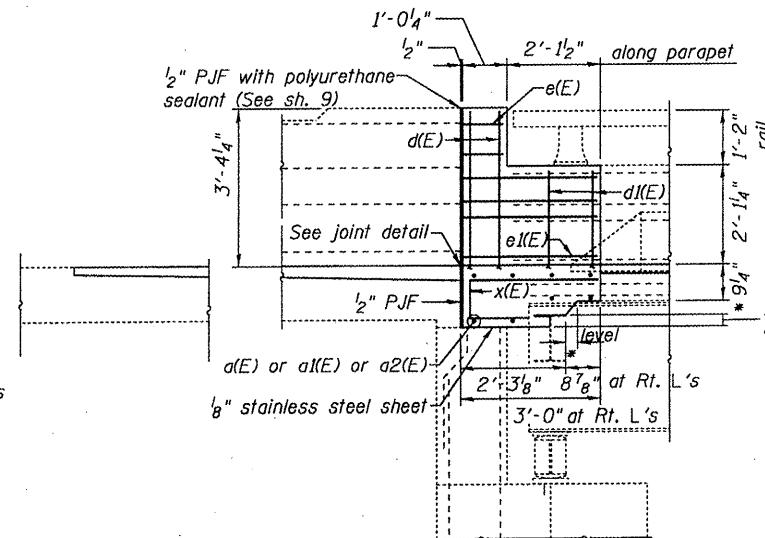


JOINT DETAIL  
(NW, NE, & SW Approaches)

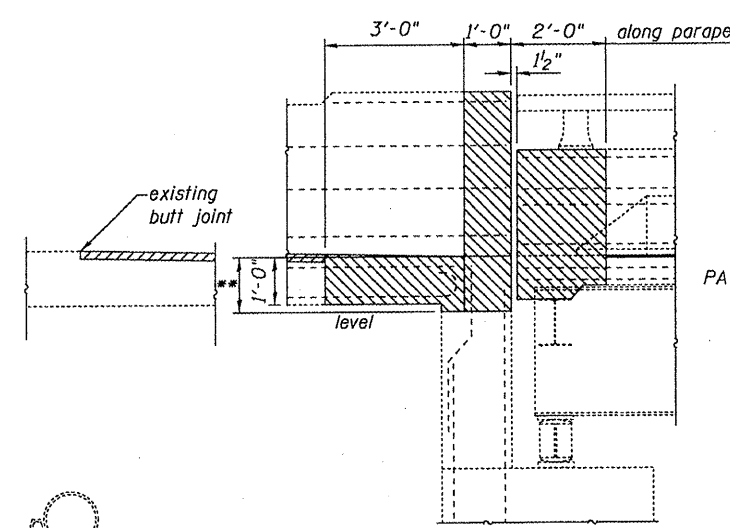
The 1/8" stainless steel sheet shall be placed full length and bonded to the top of the backwall. Areas where the top of the backwall is spalled or is not a smooth, level surface, shall be repaired with formed concrete repair. The cost for this work shall be included with CONCRETE SUPERSTRUCTURE.



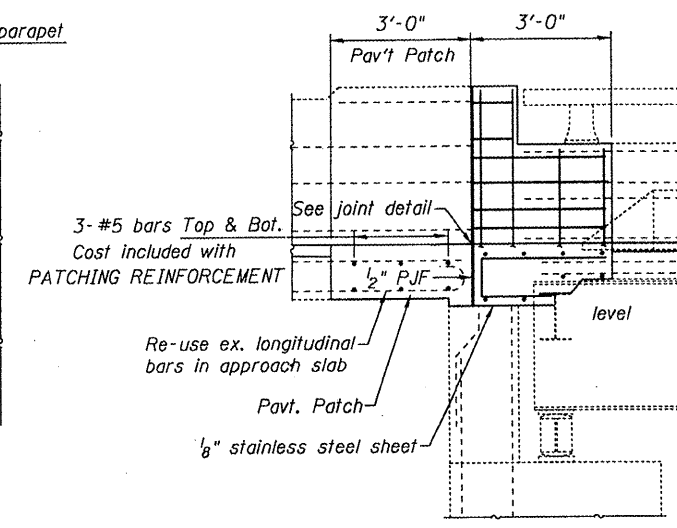
SECTION C-C  
Parapet Side



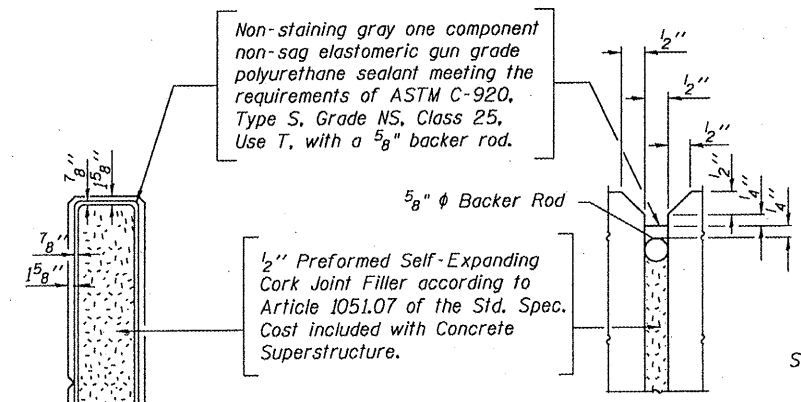
SECTION D-D  
Parapet Side



SECTION E-E  
(S.E. approach only)

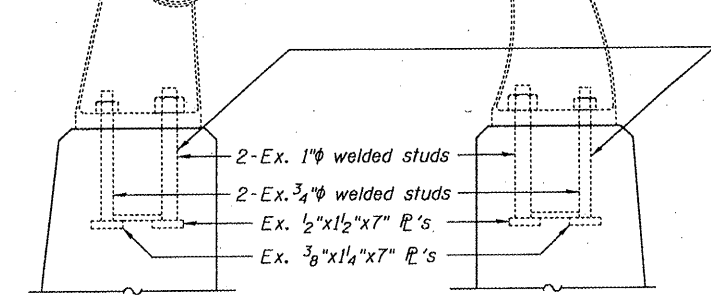


SECTION F-F  
(S.E. approach only)



Non-staining gray one component non-sag elastomeric gun grade polyurethane sealant meeting the requirements of ASTM C-920, Type S, Grade NS, Class 25, Use T, with a 5/8" backer rod.

1/2" Preformed Self-Expanding Cork Joint Filler according to Article 1051.07 of the Std. Spec. Cost included with Concrete Superstructure.



RAILPOST ANCHOR  
Sidewalk side (N side of N. bridge)

RAILPOST ANCHOR  
Parapet side

The existing rail post anchors shall be cleaned and cast into the the reconstructed wingwalls. Cost included with CONCRETE SUPERSTRUCTURE.

JOINT RETROFIT SECTIONS  
IL 111/140 OVER WOOD RIVER CREEK

DESIGNED	J. Uehle
CHECKED	B. Williams
DRAWN	J. Uehle
CHECKED	B. Williams

EXAMINED	2008
PASSED	ENGINEER OF BRIDGE DESIGN
	ENGINEER OF BRIDGES AND STRUCTURES

SHEET NO. 5	F.A.P. RTE.	SECTION	COUNTY	TOTAL SHEETS	SHEET NO.
	785	132-4RS	MADISON	12	8
9 SHEETS	SN 060-0187 & 0190		CONTRACT NO. 76B89		
FED. ROAD DIST. NO. - ILLINOIS FED. AID PROJECT					