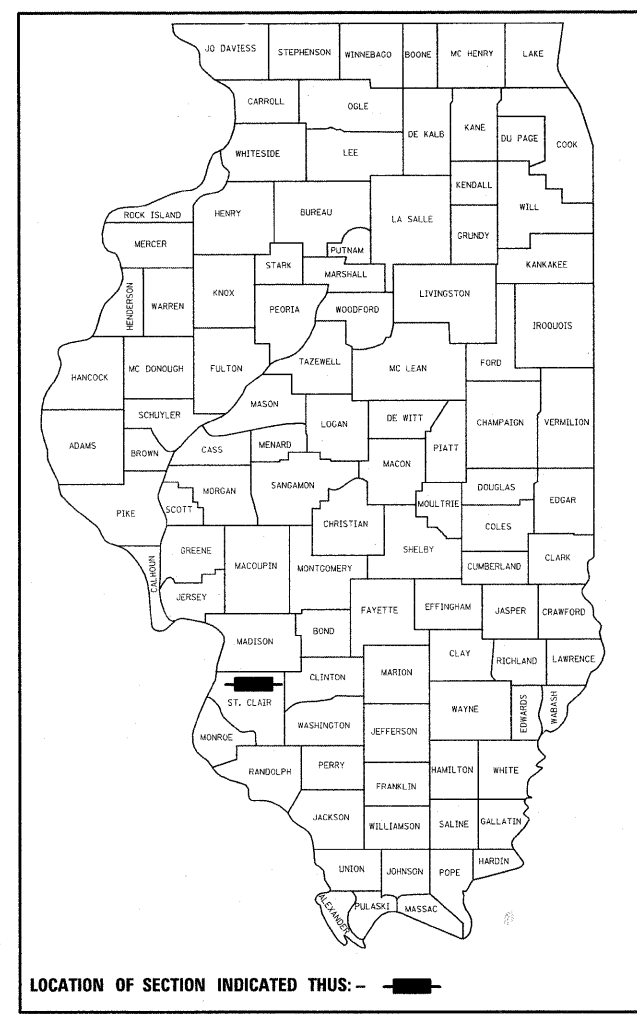


F.A.I. RTE.	SECTION	COUNTY	TOTAL SHEETS	SHEET NO.
64	82-(7,8)I	ST. CLAIR	52	1
FED. ROAD DIST. NO.	ILLINOIS	CONTRACT NO. 76C14		

**STATE OF ILLINOIS  
DEPARTMENT OF TRANSPORTATION  
DIVISION OF HIGHWAYS**

**PROPOSED  
HIGHWAY PLANS**

D-98-088-08



FOR INDEX OF SHEETS, SEE SHEET NO. 2

**HIGHWAY STANDARDS**

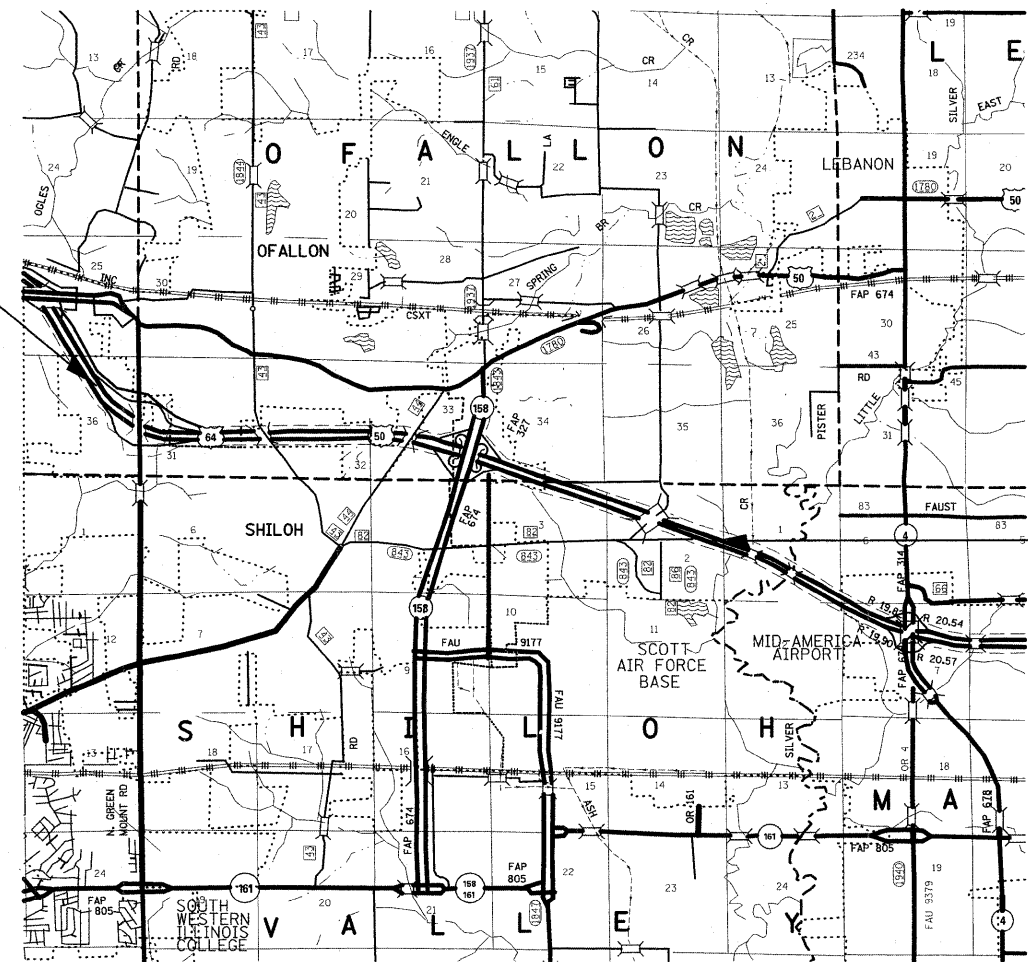
- 000001-05
- 280001-04
- 701101-02
- 701400-03
- 701401-05
- 701426-03
- 701901-01

**FAI ROUTE 64 (I-64)  
SECTION 82-(7,8)I  
PROJECT: HSIP-064-1(122)013  
ST. CLAIR COUNTY  
C-98-083-08  
HIGH TENSION MEDIAN CABLE BARRIER**

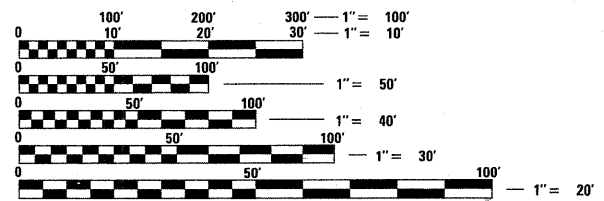
**BEGIN PROJECT**  
STA. 743 + 70  
LAT: 38.576077  
LONG: -89.929102

**STATION EQUATIONS:**

STA. 759 + 62.08 BK = STA. 759 + 62.23 AH  
 STA. 816 + 85.58 BK = STA. 816 + 85.16 AH  
 STA. 859 + 63.70 BK = STA. 859 + 77.63 AH  
 STA. 913 + 26.32 BK = STA. 913 + 25.94 AH



**END PROJECT**  
STA. 1031 + 00  
LAT: 38.551655  
LONG: -89.807122



FULL SIZE PLANS HAVE BEEN PREPARED USING STANDARD ENGINEERING SCALES. REDUCED SIZED PLANS WILL NOT CONFORM TO STANDARD SCALES. IN MAKING MEASUREMENTS ON REDUCED PLANS, THE ABOVE SCALES MAY BE USED.

J.U.L.I.E.  
JOINT UTILITY LOCATION INFORMATION FOR EXCAVATION  
1-800-892-0123  
OR 811

PROJECT ENGINEER: PATTI LEBEAU 618/346-3179  
PROJECT MANAGER: CHERYL KEPLAR 618/346-3186

CONTRACT NO. 76C14

GROSS LENGTH = 28730 FT = 5.44 MILES  
NET LENGTH = 28716.72 FT = 5.44 MILES

STATE OF ILLINOIS  
DEPARTMENT OF TRANSPORTATION  
DIVISION OF HIGHWAYS

SUBMITTED *December 8 20 08*

*Mary C. Jamie*  
DEPUTY DIRECTOR OF HIGHWAYS, REGION 5 ENGINEER

*January 30 20 09*  
*Charles J. Engersoll/RO*  
ENGINEER OF DESIGN AND ENVIRONMENT

*January 30, 20 09*  
*Christina M. Reed/RO*  
DIRECTOR OF HIGHWAYS, CHIEF ENGINEER

**PRINTED BY THE AUTHORITY  
OF THE STATE OF ILLINOIS**