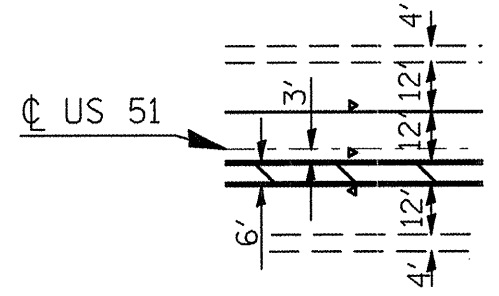


F.A.P. RTE.	SECTION	COUNTY	TOTAL SHEETS	SHEET NO.
322	02	UNION	19	14
STA. 1000+00 TO STA. 1010+44		FED. ROAD DIST. NO. - ILLINOIS FED. AID PROJECT		

- FAP 322 (US 51)
- D9 PAVEMENT PRESERVATION FY09-2
- UNION COUNTY

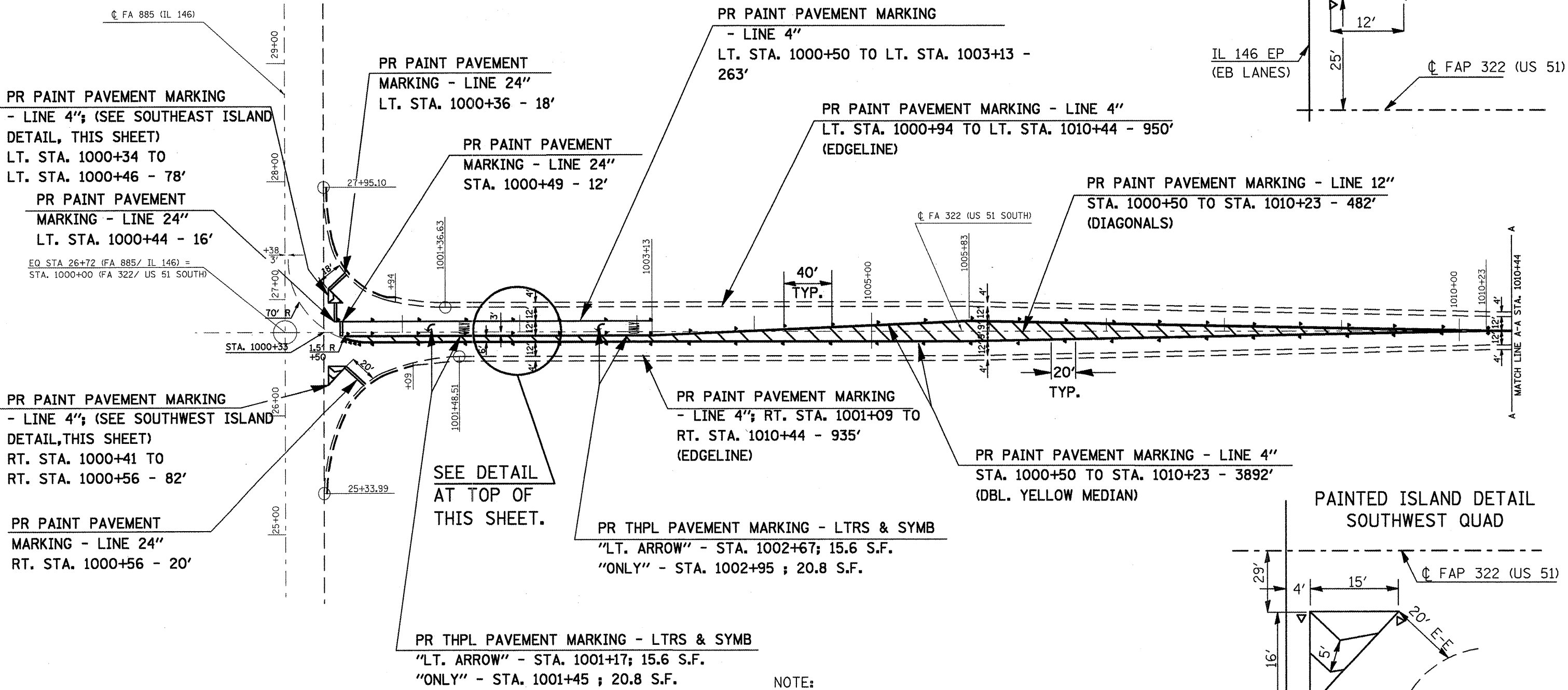
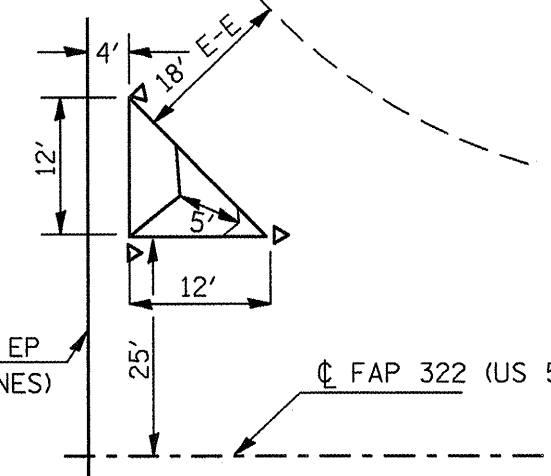


DETAIL OF LANE WIDTHS

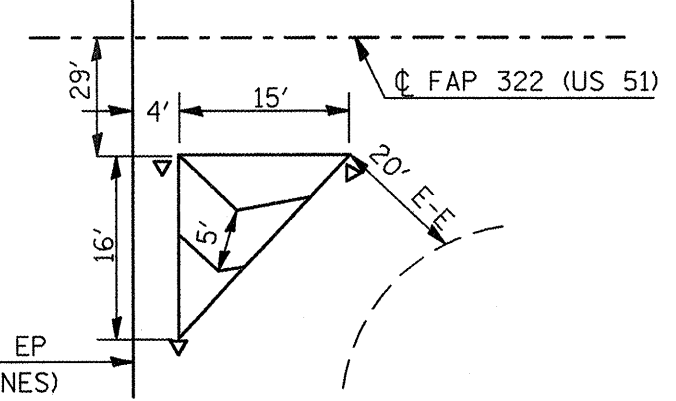


PAVEMENT MARKING DETAIL
FAP 322 (US 51)
STA. 1000+33 TO STA. 1010+44

PAINTED ISLAND DETAIL
SOUTHEAST QUAD



PAINTED ISLAND DETAIL
SOUTHWEST QUAD



NOTE:
FOR RAISED REFLECTIVE PAVEMENT MARKERS,
SEE SCHEDULE ON SHEET 14.

PLOT DATE = 11/17/2009
 FILE NAME = \\va-ws-01\users\jdo\work\78017\14.dgn
 PLOT SCALE = 84.7859 / IN.
 USER NAME = jdo