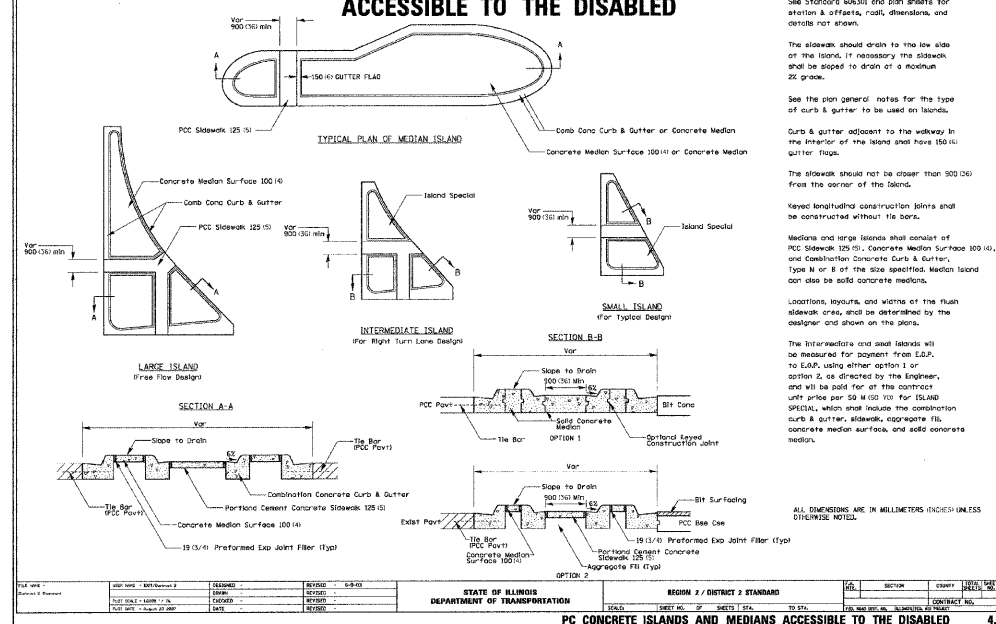


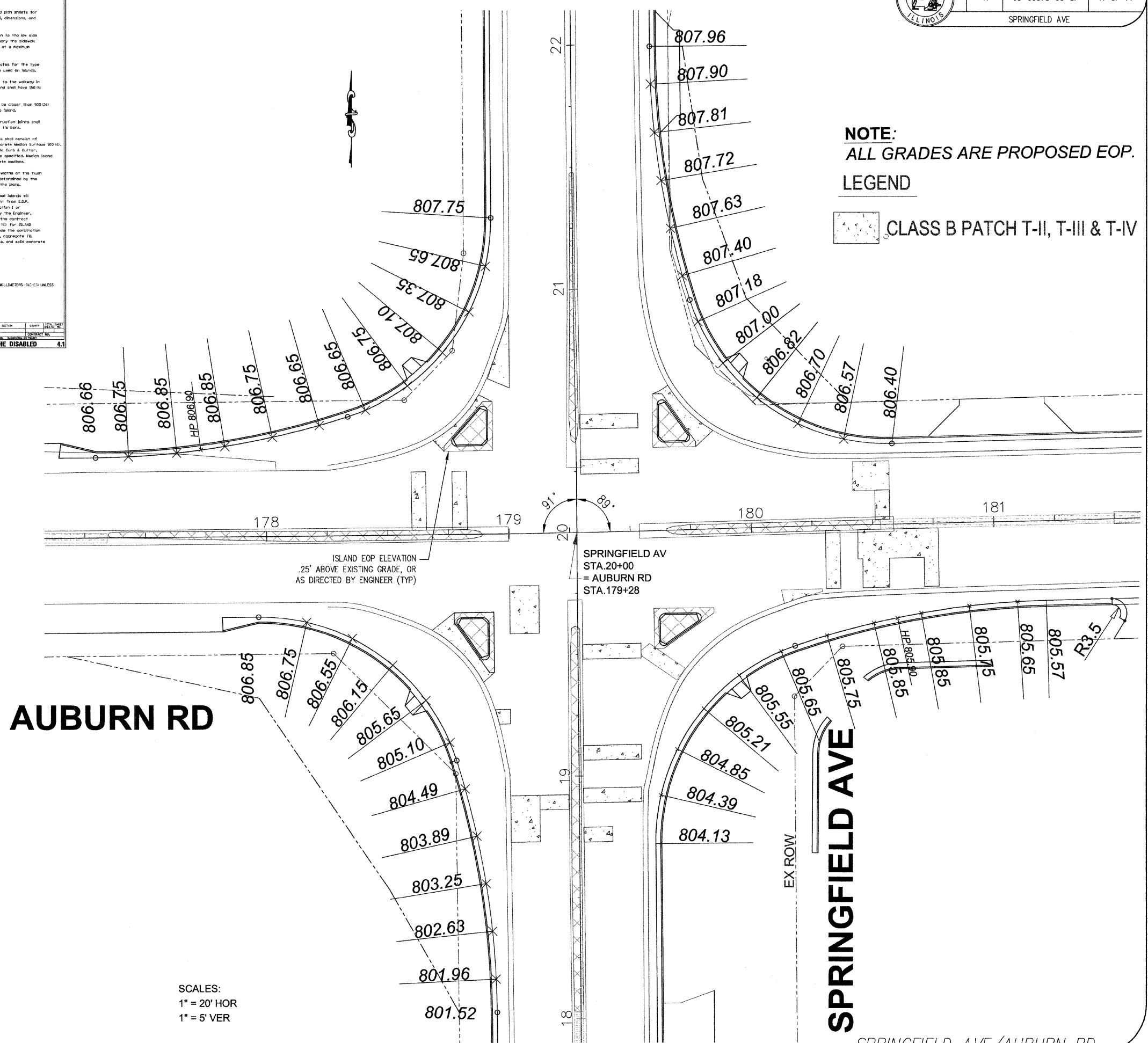


**PC CONCRETE ISLANDS AND MEDIANS ACCESSIBLE TO THE DISABLED**



**NOTE:**  
 ALL GRADES ARE PROPOSED EOP.

**LEGEND**  
 CLASS B PATCH T-II, T-III & T-IV



SCALES:  
 1" = 20' HOR  
 1" = 5' VER