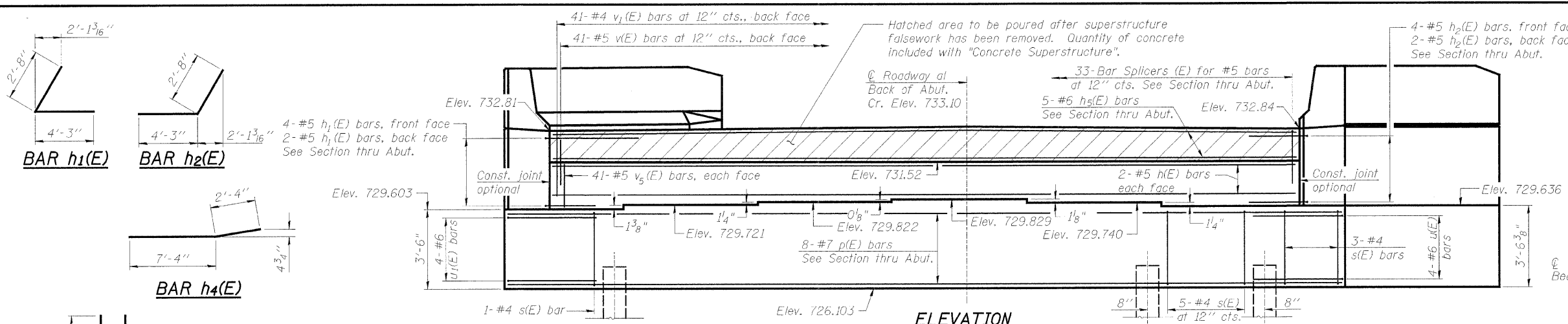


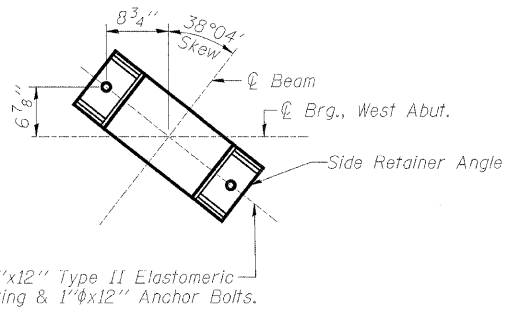
PROJECT	SECTION	COUNTY	SHEET	TOTAL
5154	04-00343-00-BR	WINNEBAGO	92	38

FED. ROAD DIST. NO. 7 ILLINOIS FED. AID PROJECT-BRM-5099(T5)

Structural Sheet 14A of 22A



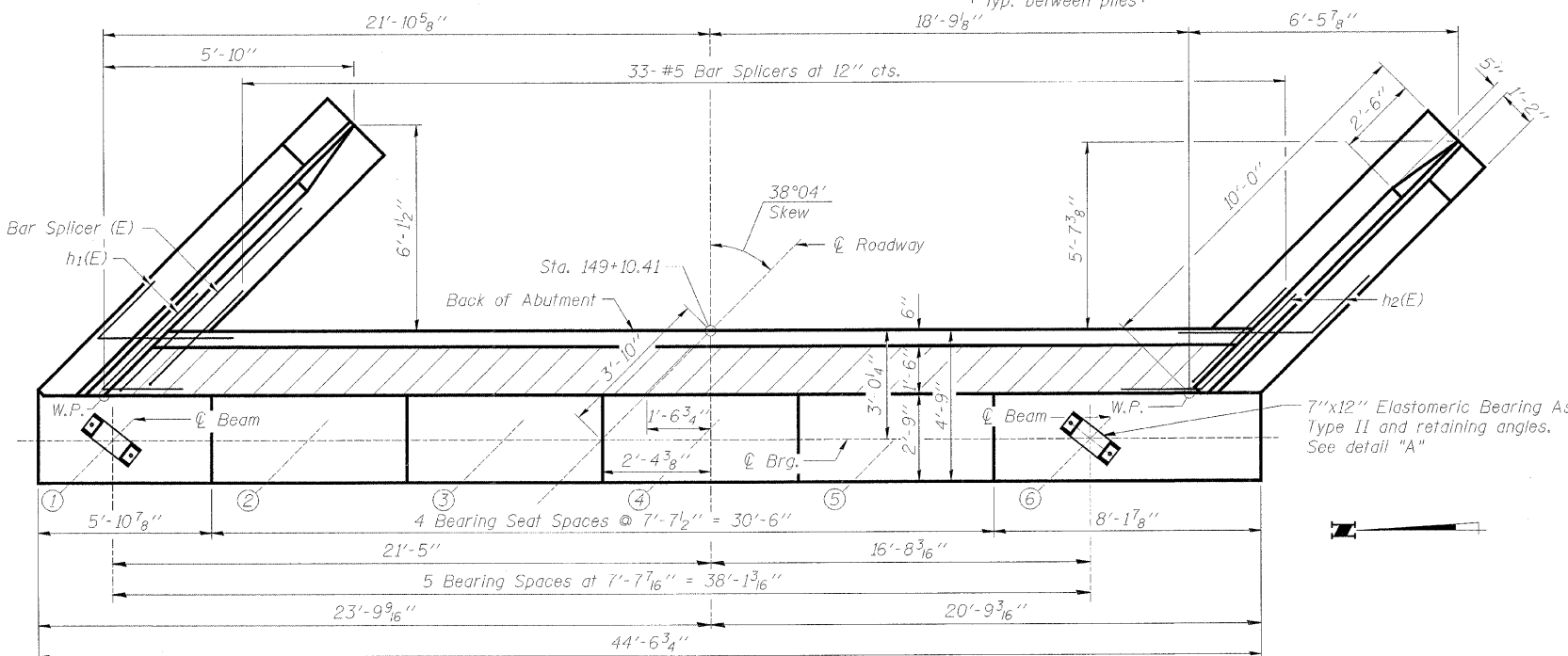
ELEVATION



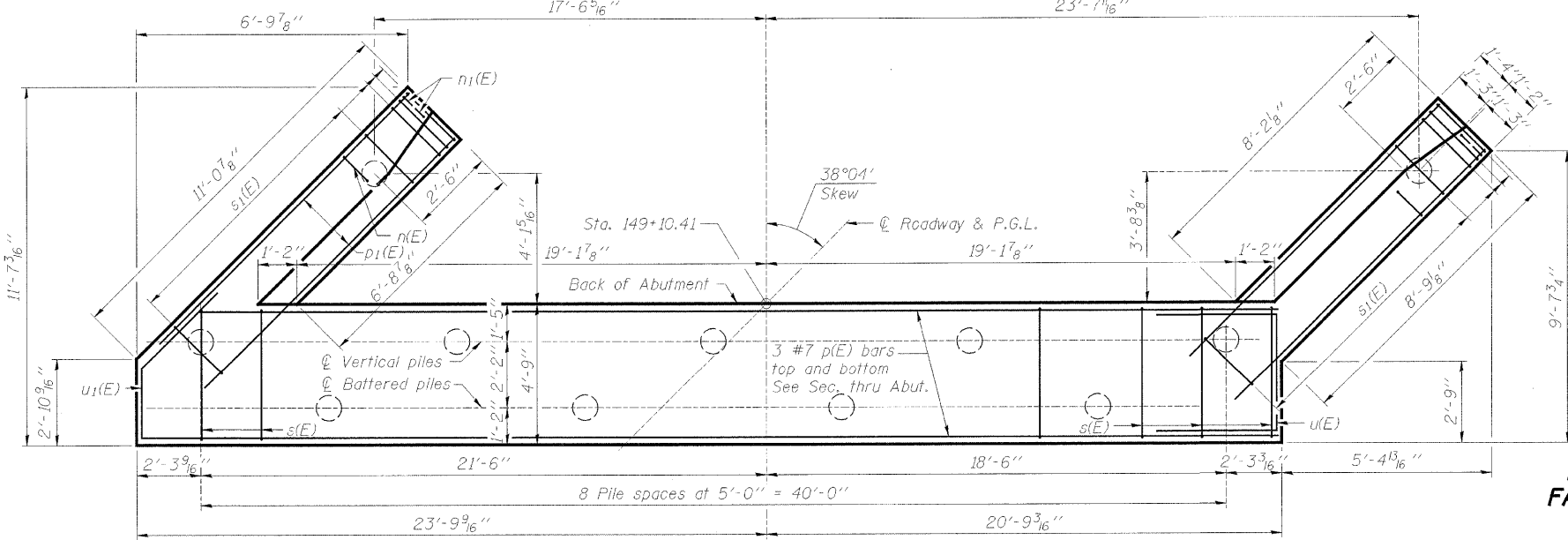
DETAIL "A"

ABUTMENT BILL OF MATERIAL

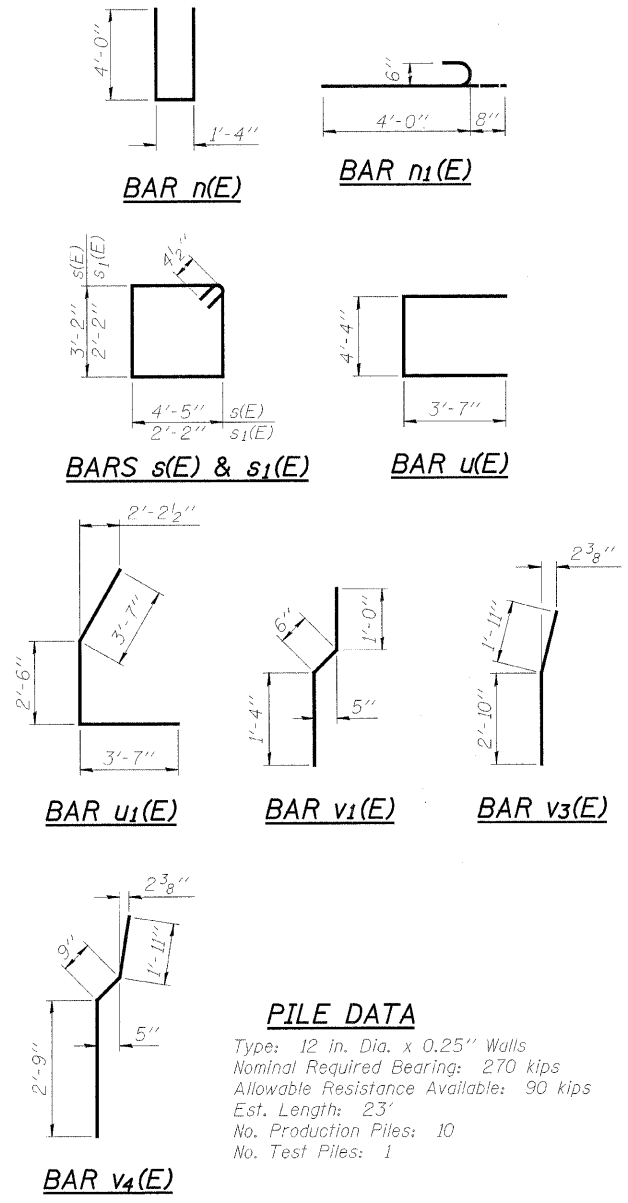
Bar	No.	Size	Length	Shape
h(E)	4	#5	40'-6"	
h1(E)	6	#5	6'-11"	
h2(E)	6	#5	6'-11"	
h3(E)	14	#4	8'-5"	
h4(E)	14	#4	9'-5"	
h5(E)	5	#6	40'-2"	
n(E)	16	#6	9'-4"	
n1(E)	12	#6	4'-8"	
p(E)	8	#7	44'-2"	
p1(E)	12	#7	10'-9"	
s(E)	44	#4	15'-11"	
s1(E)	28	#4	9'-5"	
u(E)	4	#6	11'-6"	
u1(E)	4	#6	9'-8"	
v(E)	41	#5	2'-6"	
v1(E)	41	#4	2'-10"	
v2(E)	22	#6	5'-5"	
v3(E)	6	#6	4'-9"	
v4(E)	16	#6	5'-5"	
v5(E)	82	#5	4'-2"	
Porous Granular Embankment			Cu. Yd.	51
Structure Excavation			Cu. Yd.	100
Concrete Structures			Cu. Yd.	41.7
Reinforcement Bars, Epoxy Coated			Pound	3,680
Bar Splicers			Each	33
Furnishing Metal Shell Piles, 12"			Foot	230
Driving Piles			Foot	230
Test Pile, Metal Shell			Each	1
Concrete Sealer			Sq. Ft.	124
Geocomposite Wall Drain			Sq. Yd.	23
Pipe Underdrains for Structures 4"			Foot	74



TOP VIEW



PLAN-PILE CAP



PILE DATA

Type: 12 in. Dia. x 0.25" Walls
 Nominal Required Bearing: 270 kips
 Allowable Resistance Available: 90 kips
 Est. Length: 23'
 No. Production Piles: 10
 No. Test Piles: 1

NOTES:

For Bar Splicer Assembly detail, see Structural Sheet 20A of 22A.
 For pile detail see Structural Sheet 18A of 22A.
 Reinforcement Bars Designated (E) shall be epoxy coated.

EAST ABUTMENT
BELTLINE ROAD OVER ILLINOIS RAILNET
FAU ROUTE 5154 SECTION 04-00343-00-BR
WINNEBAGO COUNTY
STA. 148+18.00 (S.N. 101-0172)