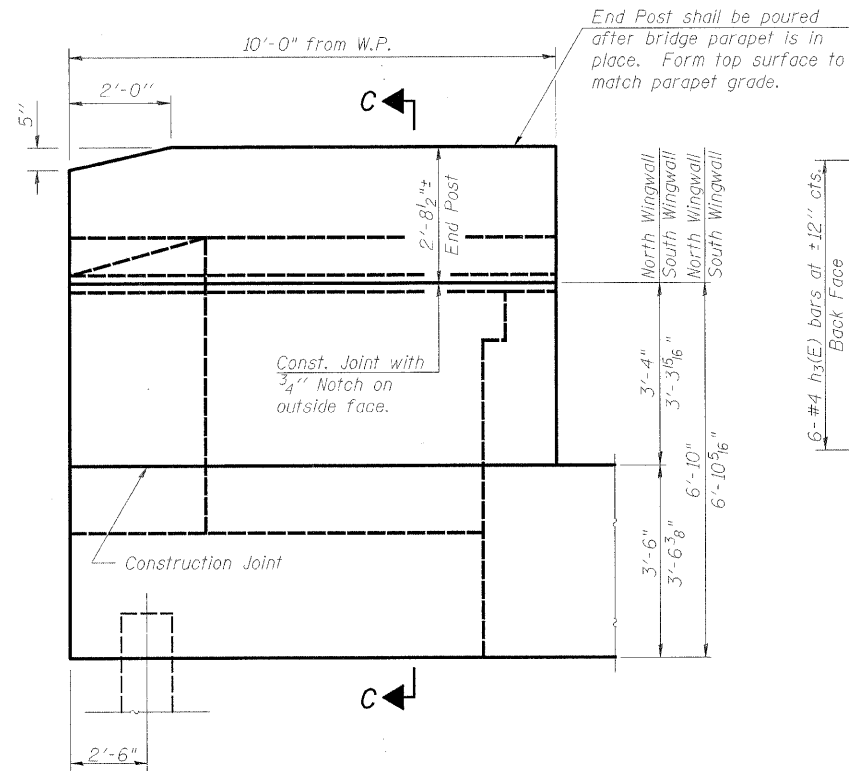
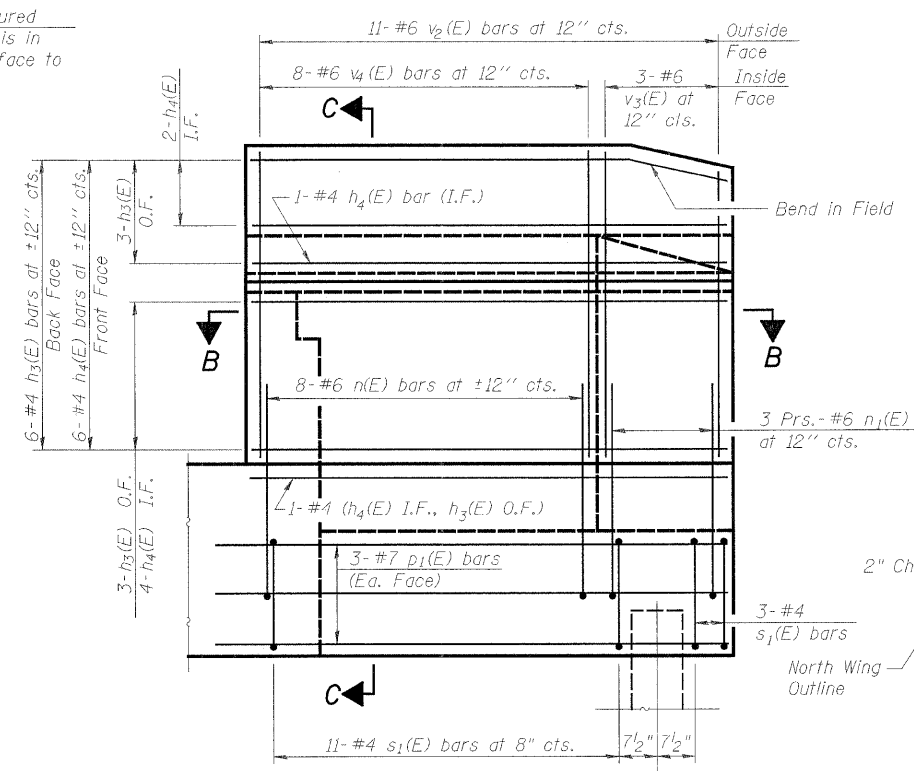


PROJECT	SECTION	COUNTY	SHEETS	SHEET NO.
5154	04-00343-00-BR	WINNEBAGO	92	39
FED. ROAD DIST. NO. 7	ILLINOIS	FED. AID PROJECT: BRM-5099(15)		

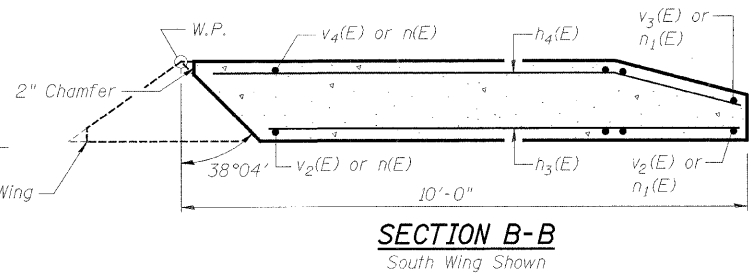
Structural Sheet 15A of 22A



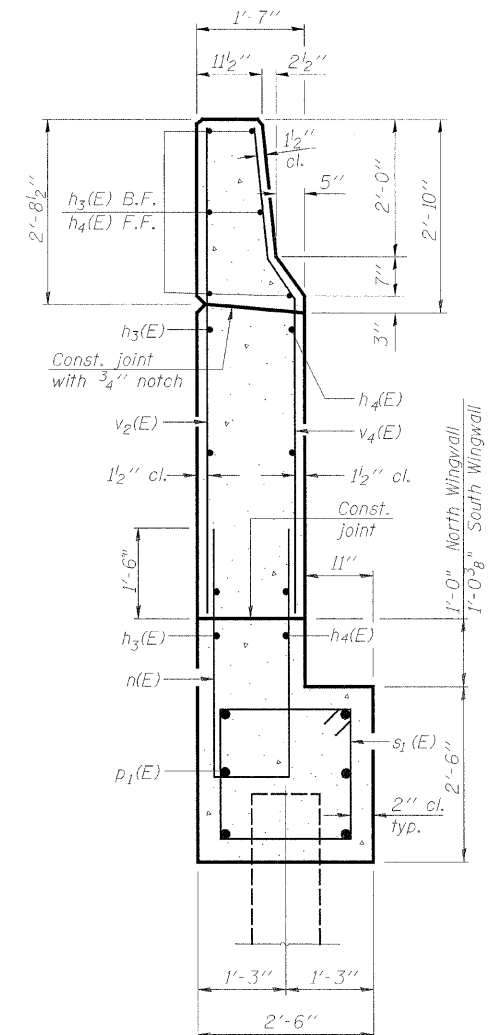
WING WALL ELEVATION
Showing Dimensions



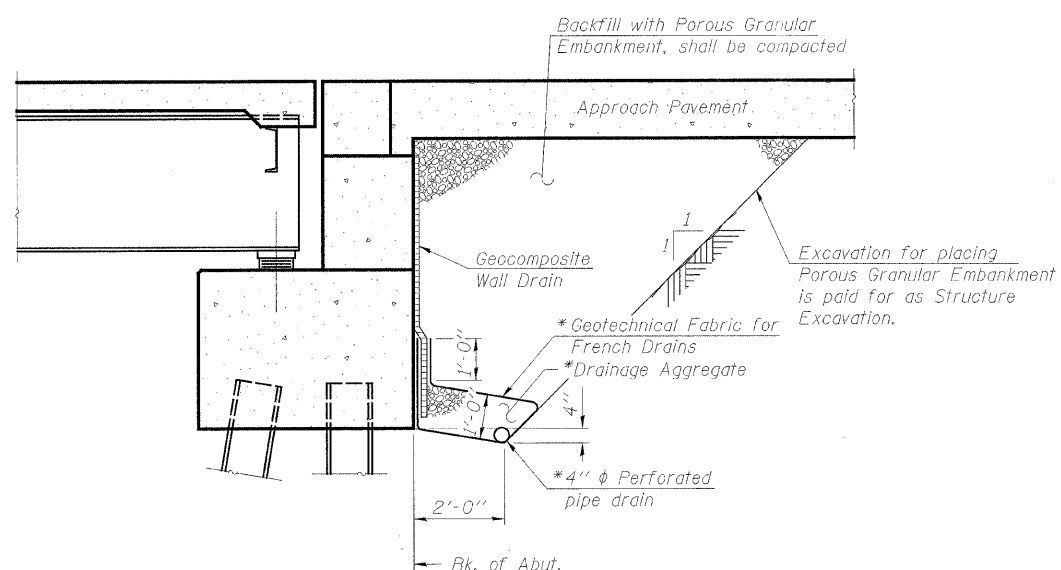
WING WALL ELEVATION
Showing Reinforcement



SECTION B-B
South Wing Shown



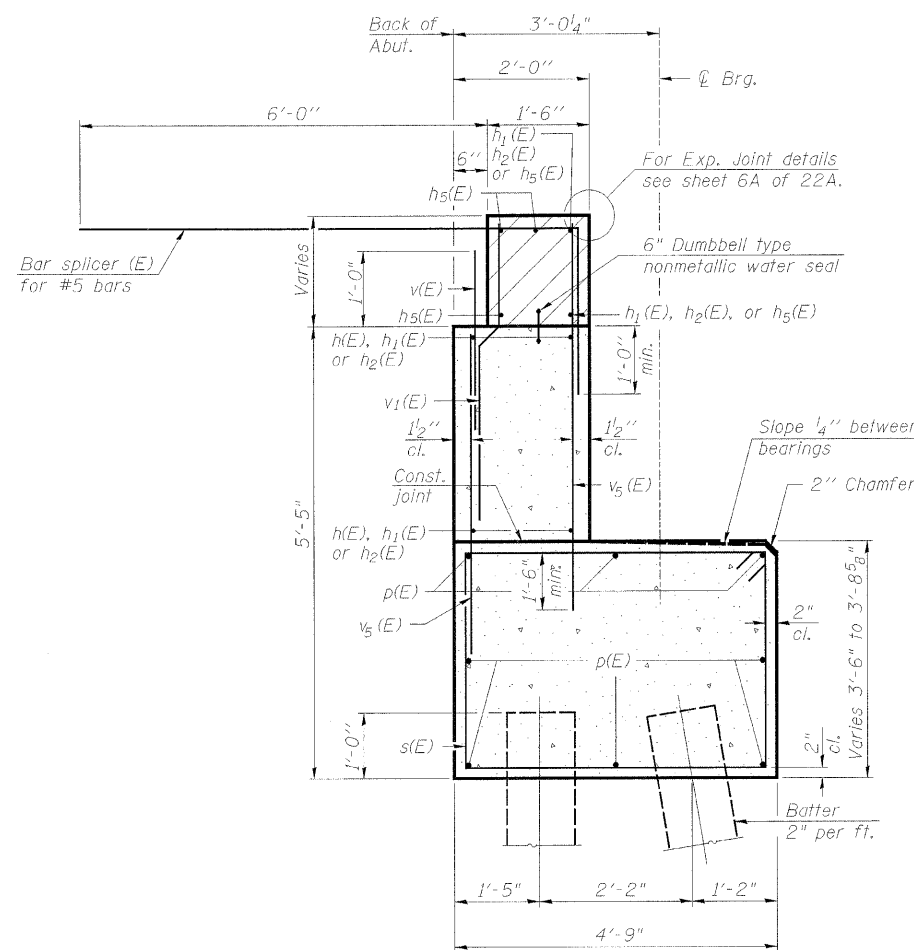
SECTION C-C



SECTION THRU PILE SUPPORTED STUB ABUTMENT
(Horiz. dim. @ Rt. L's)

* Included in the cost of Pipe Underdrains for Structures.

Note:
All drainage system components shall extend parallel to the abutment back wall until they intersect the wingwalls or 2'-0" from the end of the wingwalls when the wings are parallel to the abutment. The pipe shall extend under the wingwall, if necessary, until intersecting the side slopes. The pipes shall drain into concrete headwalls. (See Article 601.05 of the Standard Specifications and Highway Standard 60110).



SECTION THRU ABUT.

NOTES:
Hatched area to be poured after superstructure false work has been removed. Quantity of concrete included with Concrete Superstructure. Space reinforcement in cap to miss anchor bolts. Pour steps monolithically with cap. Quantity of concrete in end post included with Concrete Superstructure on Structural Sheet 5A of 22A.

EAST ABUTMENT DETAILS
BELTLINE ROAD OVER ILLINOIS RAILNET
FAU ROUTE 5154 SECTION 04-00343-00-BR
WINNEBAGO COUNTY
STA. 148+18.00 (S.N. 101-0172)