

PROJECT	SECTION	COUNTY	SHEET	TOTAL SHEETS
5154	04-00343-00-BR	WINNEBAGO	92	53
FED. ROAD DIST. NO. 7	ILLINOIS	FED. AID PROJECT-BRM-5099(75)		

Structural Sheet 7B of 21B

*Granular or solid flux filled headed studs conforming to Article 1006.32 of the Std. Specs., automatically end welded.
 **When joint is fixed, dimension is set at 1 1/2".

NOTES:

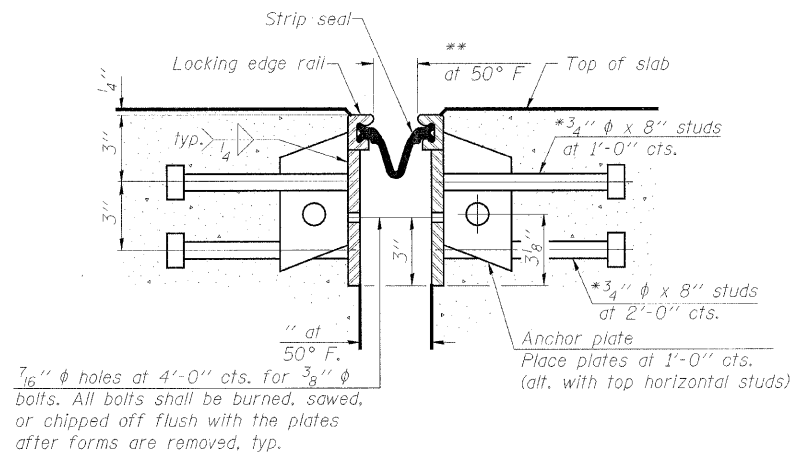
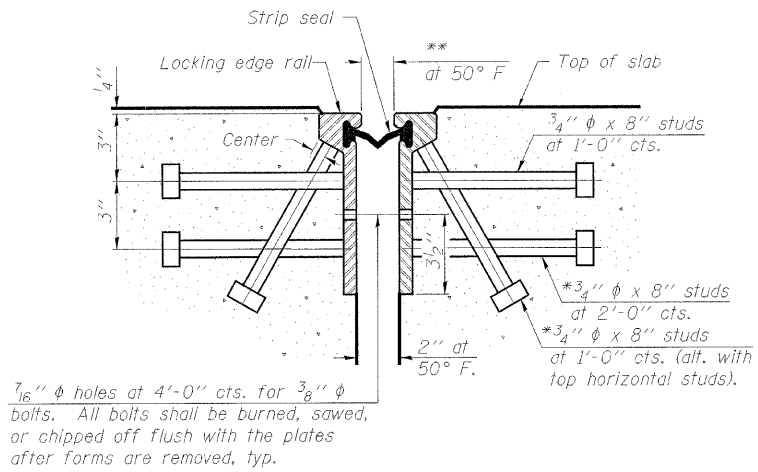
The strip seal shall be made continuous and shall have a minimum thickness of 1/4". The configuration of the strip seal shall match the configuration of the Locking Edge Rails. Open or "webbed" strip seal gland configurations are not permitted. The gland shall be sized for a maximum rated movement of 4 inches.

The height and thickness of the Locking Edge Rails shown are minimum dimensions. The actual configuration of the Locking Edge Rails and matching strip seal may vary from manufacturer to manufacturer. Flanged edge rails will not be allowed. Locking Edge Rails may be spliced at slope discontinuities and stage construction joints.

The manufacturer's recommended installation methods shall be followed.

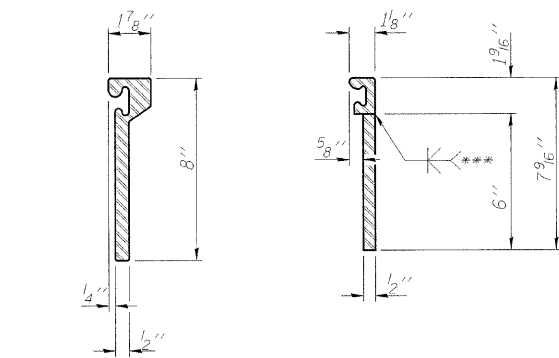
The joint opening and deck dimensions detailed on the superstructure are based on a rolled rail expansion joint. If the Contractor elects to use the welded rail expansion joint, the opening and deck dimensions shall be modified according to the dimensions detailed on this sheet. Required modifications shall be made at no additional cost to the County.

All steel components shall be galvanized after fabrication according to Article 520.03 of the Standard Specifications.

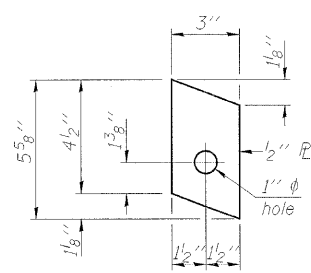


SECTION THRU ROLLED RAIL JOINT

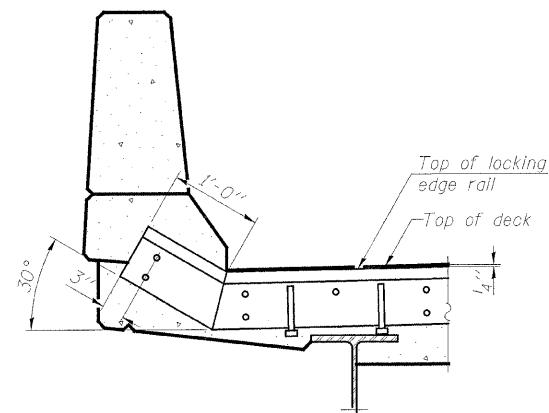
SECTION THRU WELDED RAIL JOINT



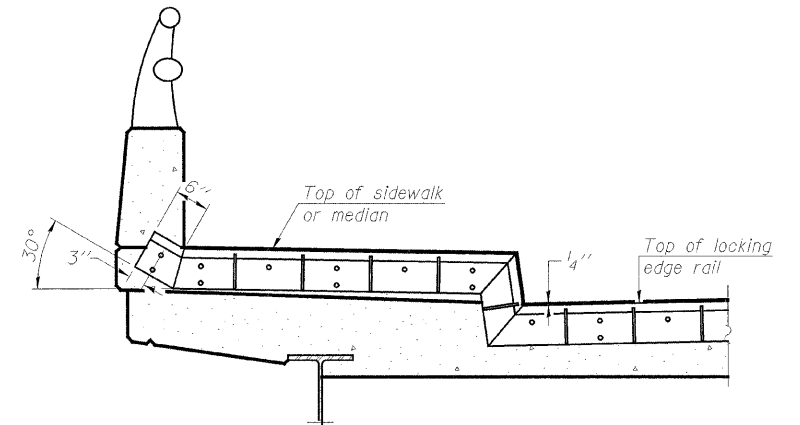
***Back gauge not required if complete joint penetration is verified by mock-up.



ANCHOR PLATE
(for welded rail)



AT PARAPET



AT SIDEWALK OR MEDIAN

Shorter plates with a single row of studs at 12" cts. may be necessary on medians which are shallower than 9". See manufacturer's recommendation.

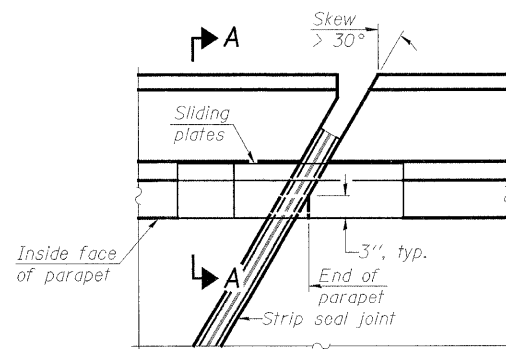
ROLLED (EXTRUDED) RAIL **WELDED RAIL**

LOCKING EDGE RAIL SPLICE

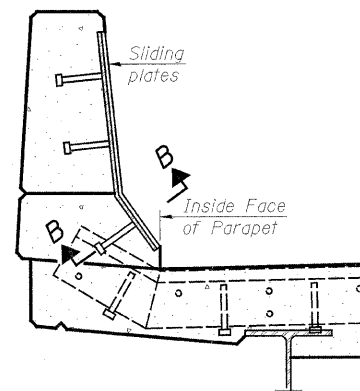
The inside of the locking edge rail groove shall be free of weld residue.

TYPICAL END TREATMENTS

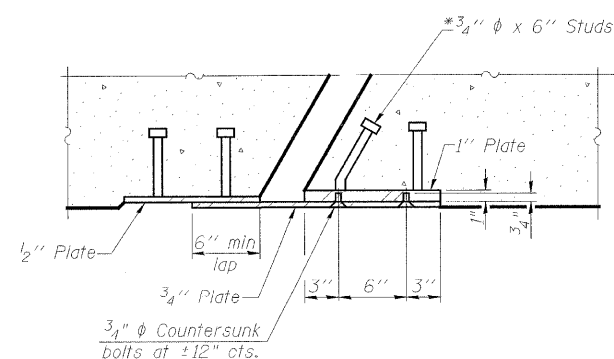
LOCKING EDGE RAILS



PLAN



SECTION A-A



SECTION B-B

BILL OF MATERIAL

Item	Unit	Total
Preformed Joint Strip Seal	Foot	82.5

POINT BLOCK DETAILS
(for skews > 30°)

PREFORMED JOINT STRIP SEAL
BELTLINE ROAD OVER KISHWAUKEE RIVER
FAU ROUTE 5154 SECTION 04-00343-00-BR
WINNEBAGO COUNTY
STA. 129+89.00 (S.N. 101-017)