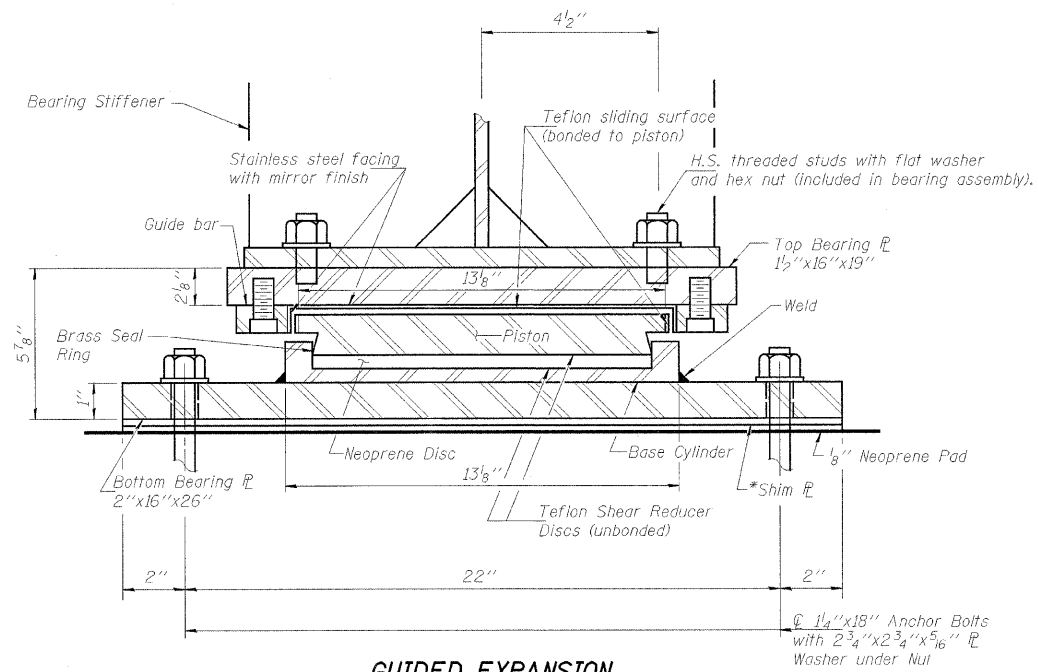


DATE	SECTION	COUNTY	SHEET	TOTAL
5/54	04-00343-00-BR	WINNEBAGO	92	58
FED. ROAD DIST. NO. 7		ILLINOIS	FED. AID PROJECT-BRM-5099(75)	

Structural Sheet 12B of 21B



**GUIDED EXPANSION
FLOATING BEARING - 250K**
(Pier #2)

* Additional 1/8" Shim required for Beam 3

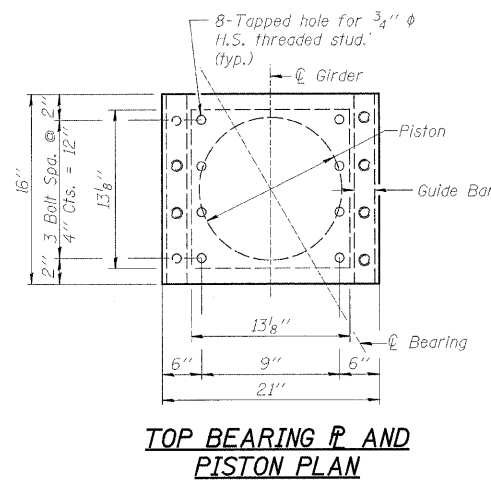
POT Bearing DATA	
	Pier #2 (Exp.)
Dead load	184.0 ^k
Live Load	61.8 ^k
Vert. Design Load	245.8 ^k
Impact	12.4 ^k
Total	504.0 ^k
Long Load	0
Trans. Loads	
Wind	82.5 ^k
Earthquake	37 ^k
Expansion Length	142'-2"

NOTES:

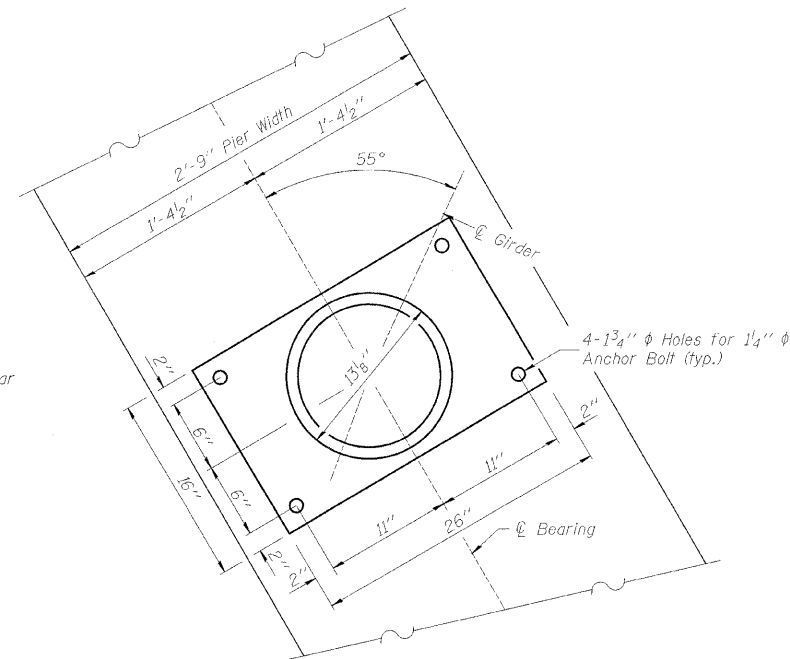
All R's of the Bearing Assembly shall be AASHTO M 270M Grade 50.

Base R Thickness was determined by using a Pot φ of 13 1/8".

Cost of field drilling is included with "Furnishing & Erecting Structural Steel".



**TOP BEARING P AND
PISTON PLAN**



**BOTTOM BEARING P AND
BASE CYLINDER PLAN**

BILL OF MATERIAL

Item	Unit	Total
Floating Bearings, Guided Expansion-250k	Each	5
Anchor Bolts, 1 1/4"	Each	24

POT BEARINGS
BELTLINE ROAD OVER KISHWAUKEE RIVER
FAU ROUTE 5154 SECTION 04-00343-00-BR
WINNEBAGO COUNTY
STA. 129+89 (S.N. 101-0171)