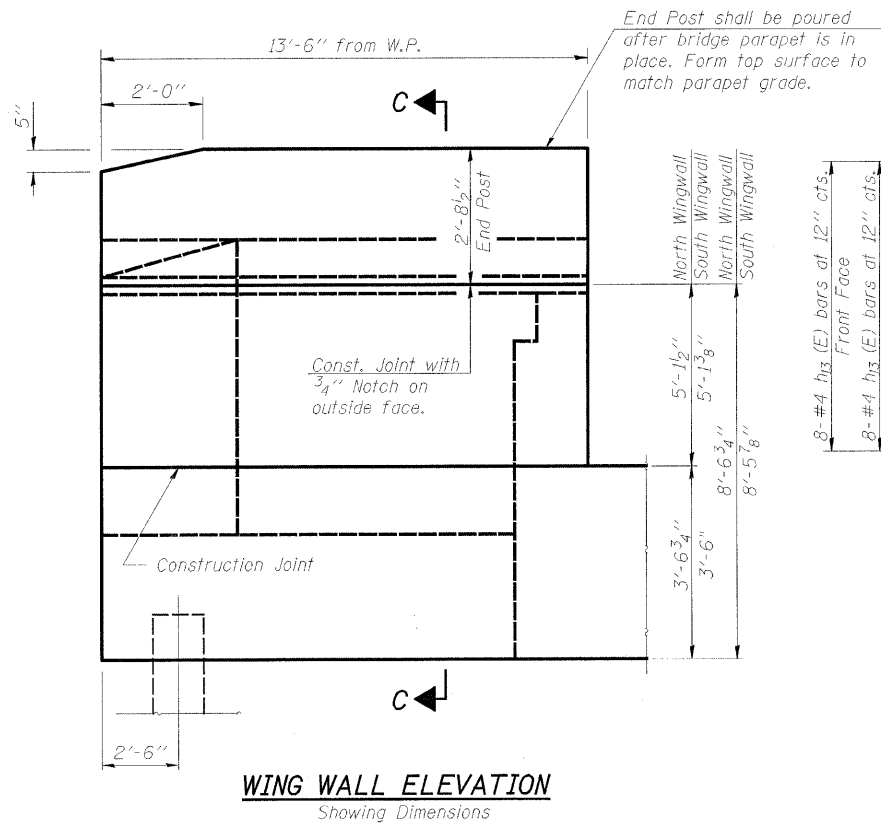
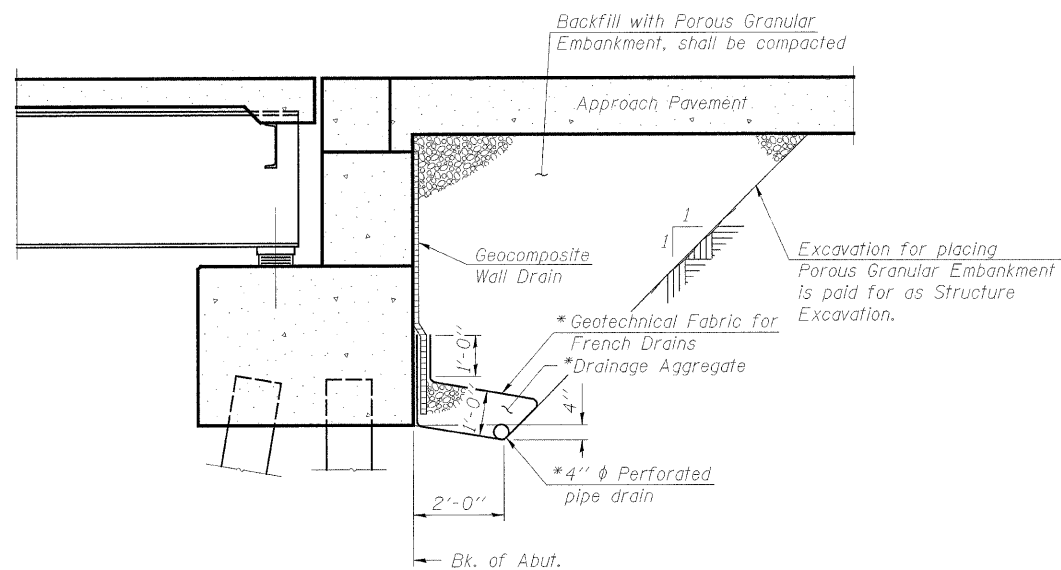
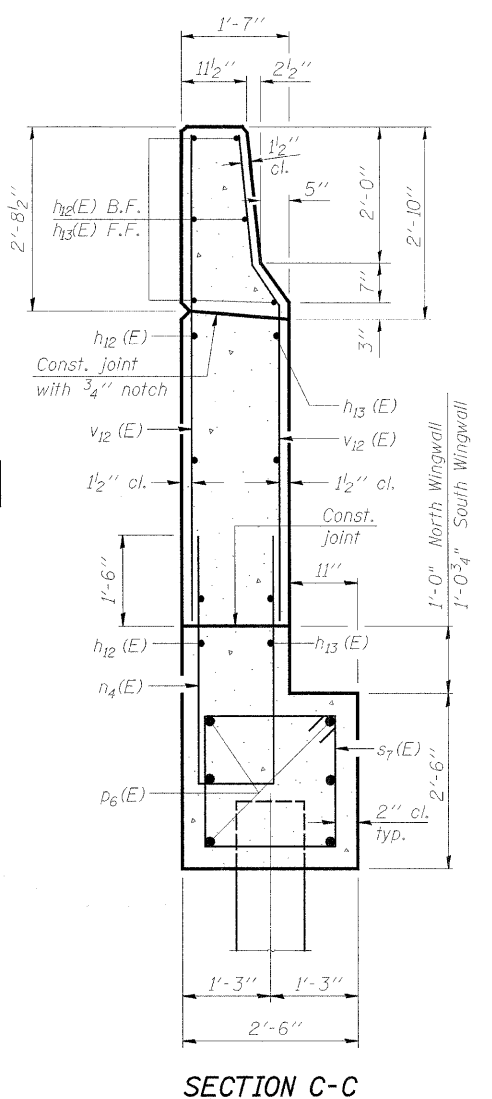
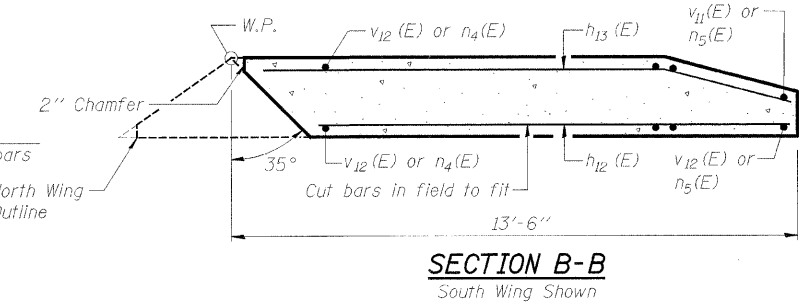
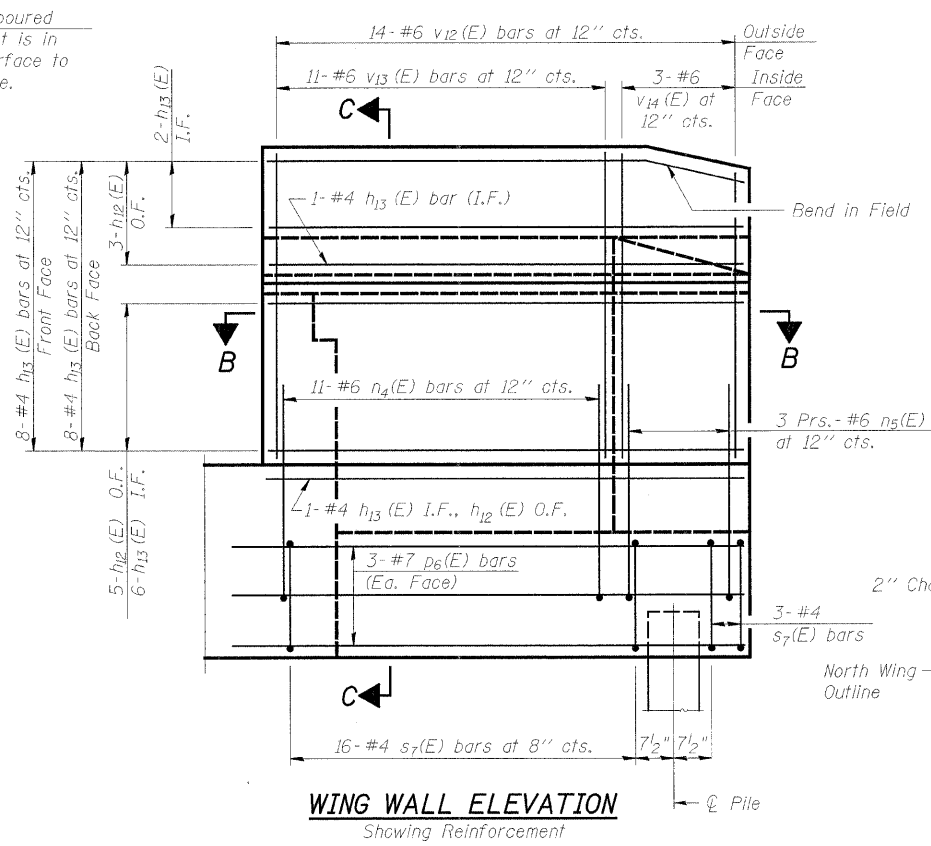


PROJECT	SECTION	COUNTY	SHEETS	SHEET
5/54	04-00343-00-BR	WINNEBAGO	92	60
FED. ROAD DIST. NO. 7		ILLINOIS	FED. AID PROJECT-BRM-5093(75)	

Structural Sheet 14B of 21B

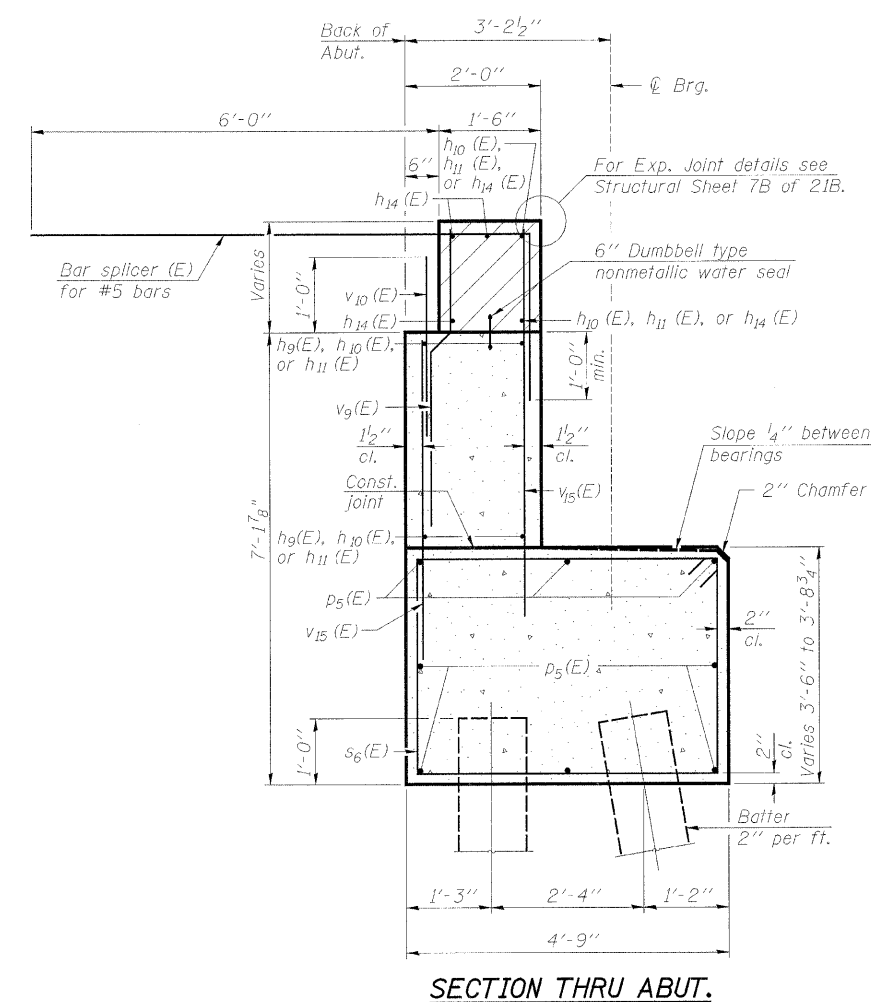


End Post shall be poured after bridge parapet is in place. Form top surface to match parapet grade.



* Included in the cost of Pipe Underdrains for Structures.

Note:
All drainage system components shall extend parallel to the abutment back wall until they intersect the wingwalls or 2'-0" from the end of the wingwalls when the wings are parallel to the abutment. The pipe shall extend under the wingwall, if necessary, until intersecting the side slopes. The pipes shall drain into concrete headwalls. (See Article 601.05 of the Standard Specifications and Highway Standard 601101).



NOTES:
Hatched area to be poured after superstructure false work has been removed. Quantity of concrete included with Concrete Superstructure. Space reinforcement in cap to miss anchor bolts. Pour steps monolithically with cap. Quantity of concrete in end post included with Concrete Superstructure on Structural Sheet 6B of 21B.

WEST ABUTMENT DETAILS
BELTLINE ROAD OVER KISHWAUKEE RIVER
FAU ROUTE 5154 SECTION 04-00343-00-BR
WINNEBAGO COUNTY
STA. 129+89.00 (S.N. 101-0171)