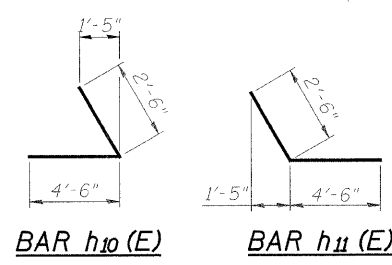
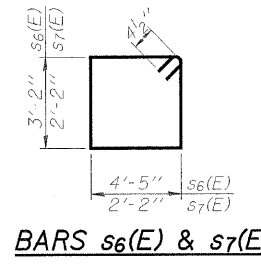
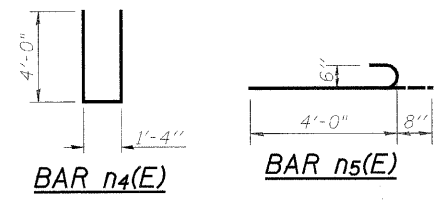
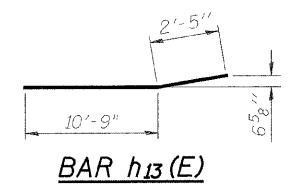


PROJECT NO.	SECTION	COUNTY	SHEETS	SHEET
5154	04-00343-00-BR	WINNEBAGO	92	61
FED. ROAD DIST. NO. 7	ILLINOIS	FED. AID PROJECT-BRM-5099(75)		

Structural Sheet 15B of 21B

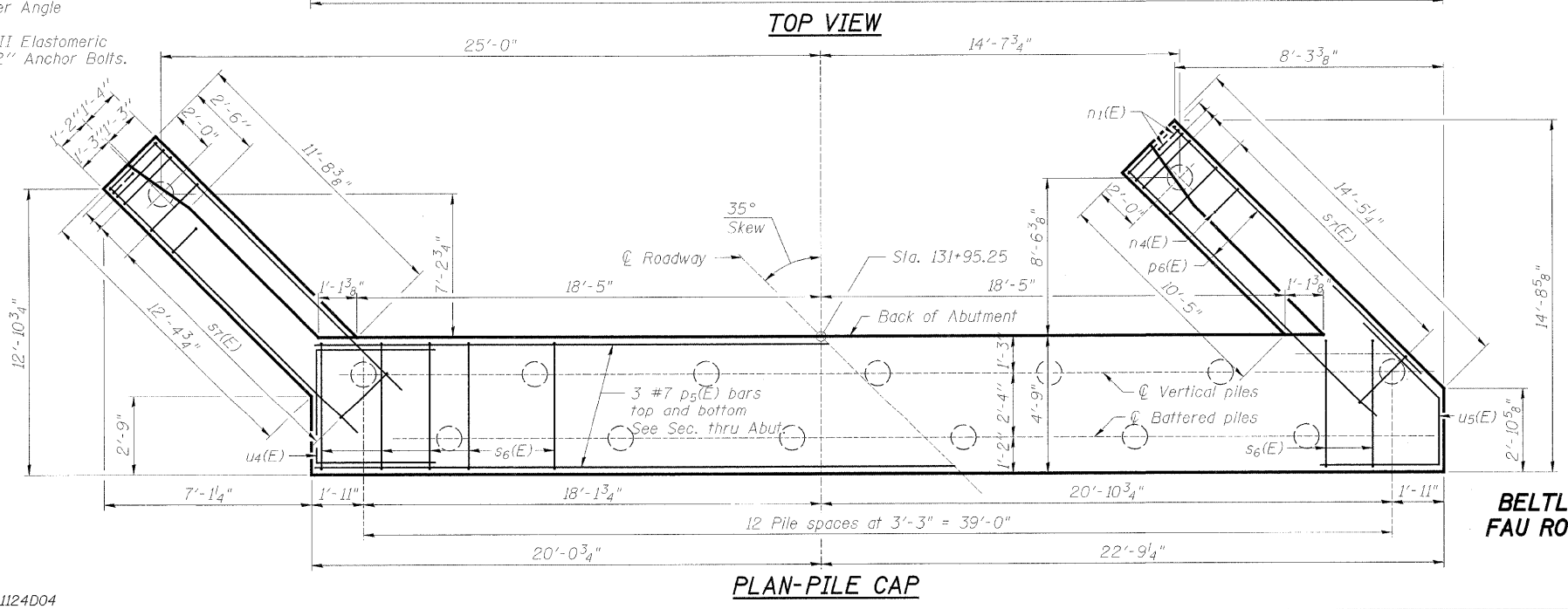
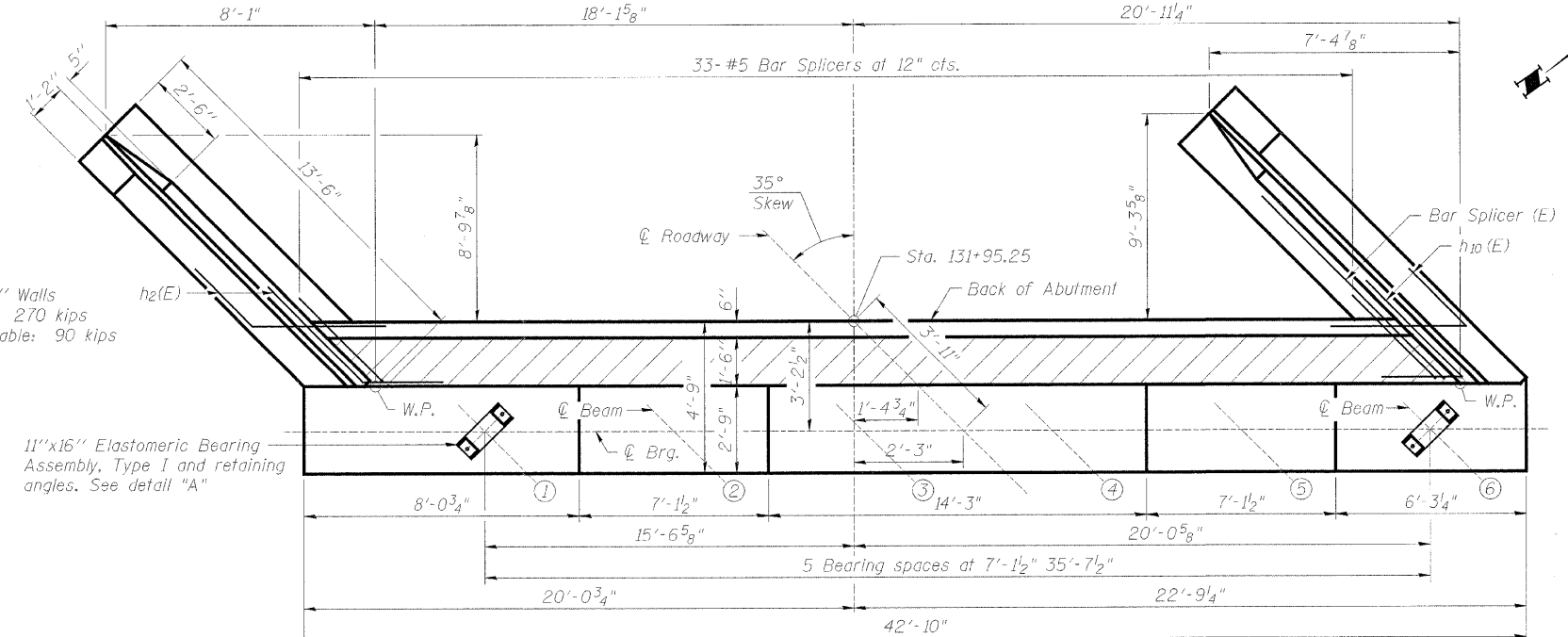
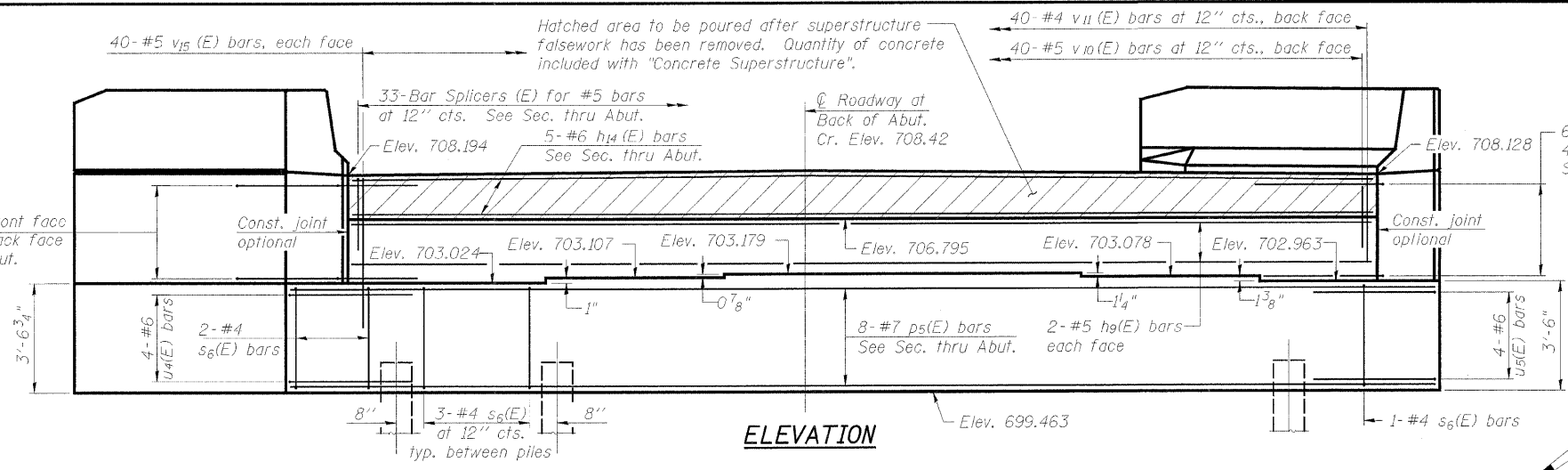
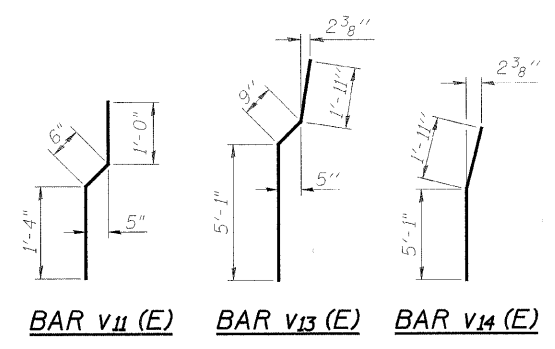
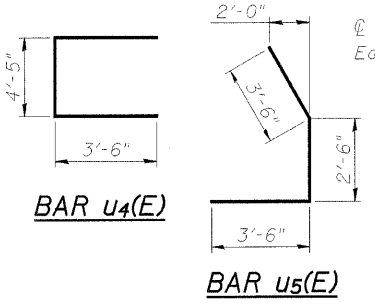
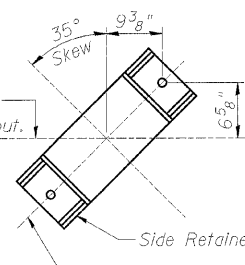


6-#5 h₁₁(E) bars, front face
 4-#5 h₁₁(E) bars, back face
 See Section thru Abut.



PILE DATA

Type: 12 in. Dia. x 0.25" Walls
 Nominal Required Bearing: 270 kips
 Allowable Resistance Available: 90 kips
 Est. Length: 59'
 No. Production Piles: 14
 No. Test Piles: 1



EAST ABUTMENT BILL OF MATERIAL

Bar	No.	Size	Length	Shape
h ₉ (E)	4	#5	38'-9"	—
h ₁₀ (E)	10	#5	7'-0"	—
h ₁₁ (E)	10	#5	7'-0"	—
h ₁₂ (E)	18	#4	13'-2"	—
h ₁₃ (E)	18	#4	13'-2"	—
h ₁₄ (E)	5	#6	38'-9"	—
n ₄ (E)	22	#6	9'-4"	—
n ₅ (E)	12	#6	4'-8"	—
p ₅ (E)	8	#7	42'-6"	—
p ₆ (E)	12	#7	13'-6"	—
s ₆ (E)	39	#4	15'-11"	—
s ₇ (E)	38	#4	9'-5"	—
u ₄ (E)	4	#6	11'-5"	—
u ₅ (E)	4	#6	9'-6"	—
v ₁₀ (E)	40	#5	2'-6"	—
v ₁₁ (E)	40	#4	2'-10"	—
v ₁₂ (E)	28	#6	7'-6"	—
v ₁₃ (E)	22	#6	7'-9"	—
v ₁₄ (E)	6	#6	7'-0"	—
v ₁₅ (E)	80	#5	6'-4"	—
Porous Granular Embankment		Cu. Yd.	58	
Structure Excavation		Cu. Yd.	180	
Concrete Structures		Cu. Yd.	52.2	
Reinforcement Bars, Epoxy Coated		Pound	4,460	
Bar Splicers		Each	33	
Furnishing Metal Shell Piles, 12"		Foot	826	
Driving Piles		Foot	826	
Test Pile, Metal Shell		Each	1	
Concrete Sealer		Sq. Ft.	119	
Geocomposite Wall Drain		Sq. Yd.	32	
Pipe Underdrains for Structures 4"		Foot	80	

NOTES:

For Bar Splicer Assembly Detail, see Structural Sheet 20B of 21B.
 For pile detail see Structural Sheet 19B of 21B.
 Reinforcement Bars Designated (E) shall be epoxy coated.

**EAST ABUTMENT BELTLINE ROAD OVER KISHWAUKEE RIVER
 FAU ROUTE 5154 SECTION 04-00343-00-BR
 WINNEBAGO COUNTY
 STA. 129+89.00 (S.N. 101-0171)**