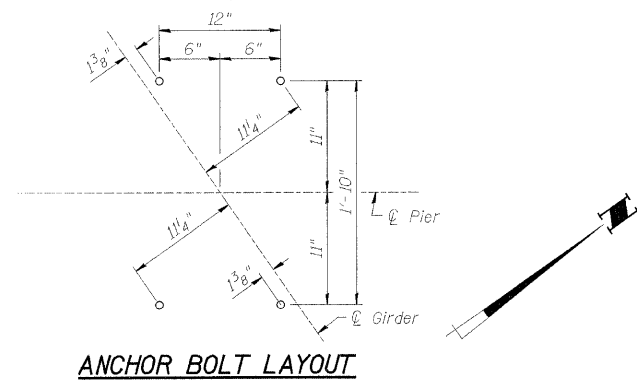
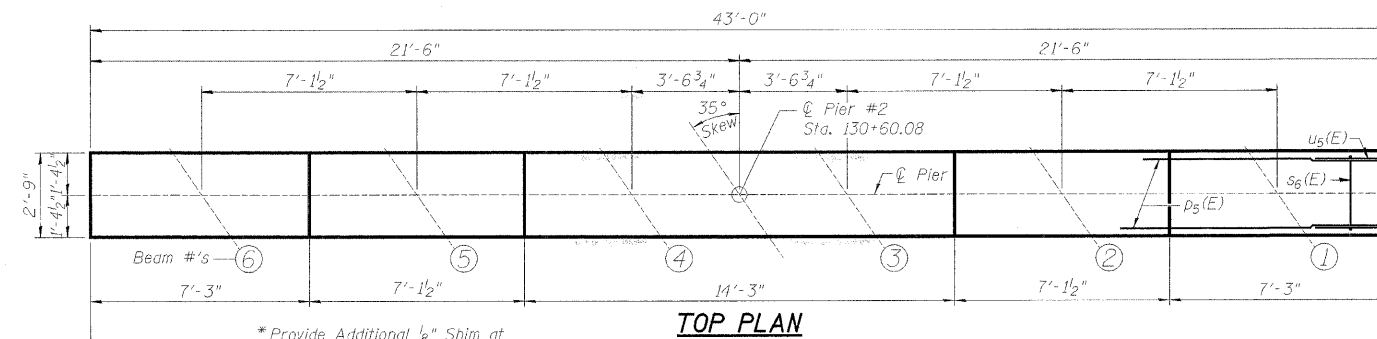


NO.	SECTION	COUNTY	SHEETS	SHEET
5154	04-00343-00-BR	WINNEBAGO	92	64
FED. ROAD DIST. NO. 7		ILLINOIS	FED. AID PROJECT-BRM-5099(75)	

Structural Sheet 18B of 21B

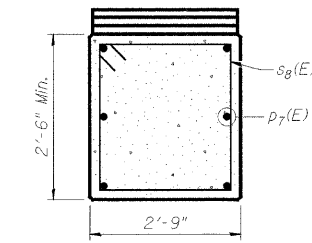


ANCHOR BOLT LAYOUT

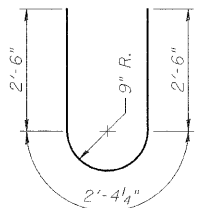


TOP PLAN

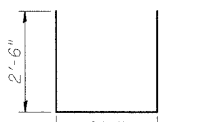
*Provide Additional 1/8" Shim at Beam 3. See Structural Sheet 9B of 21B. 44-#4 s₈(E) bars at 12" cts.



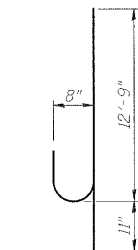
SEC. A-A



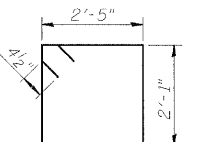
BAR u₆(E)



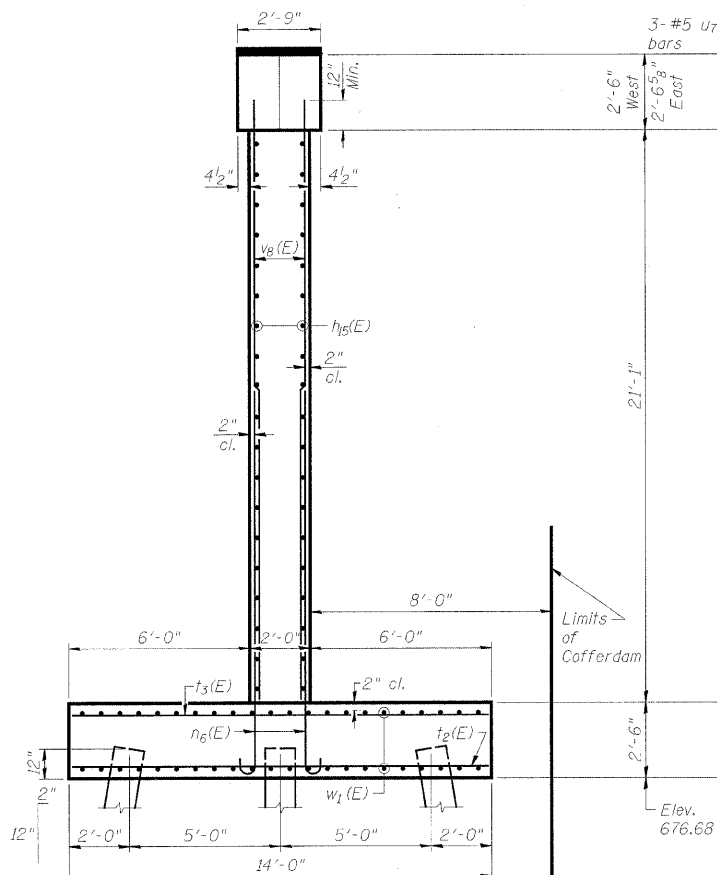
BAR u₇(E)



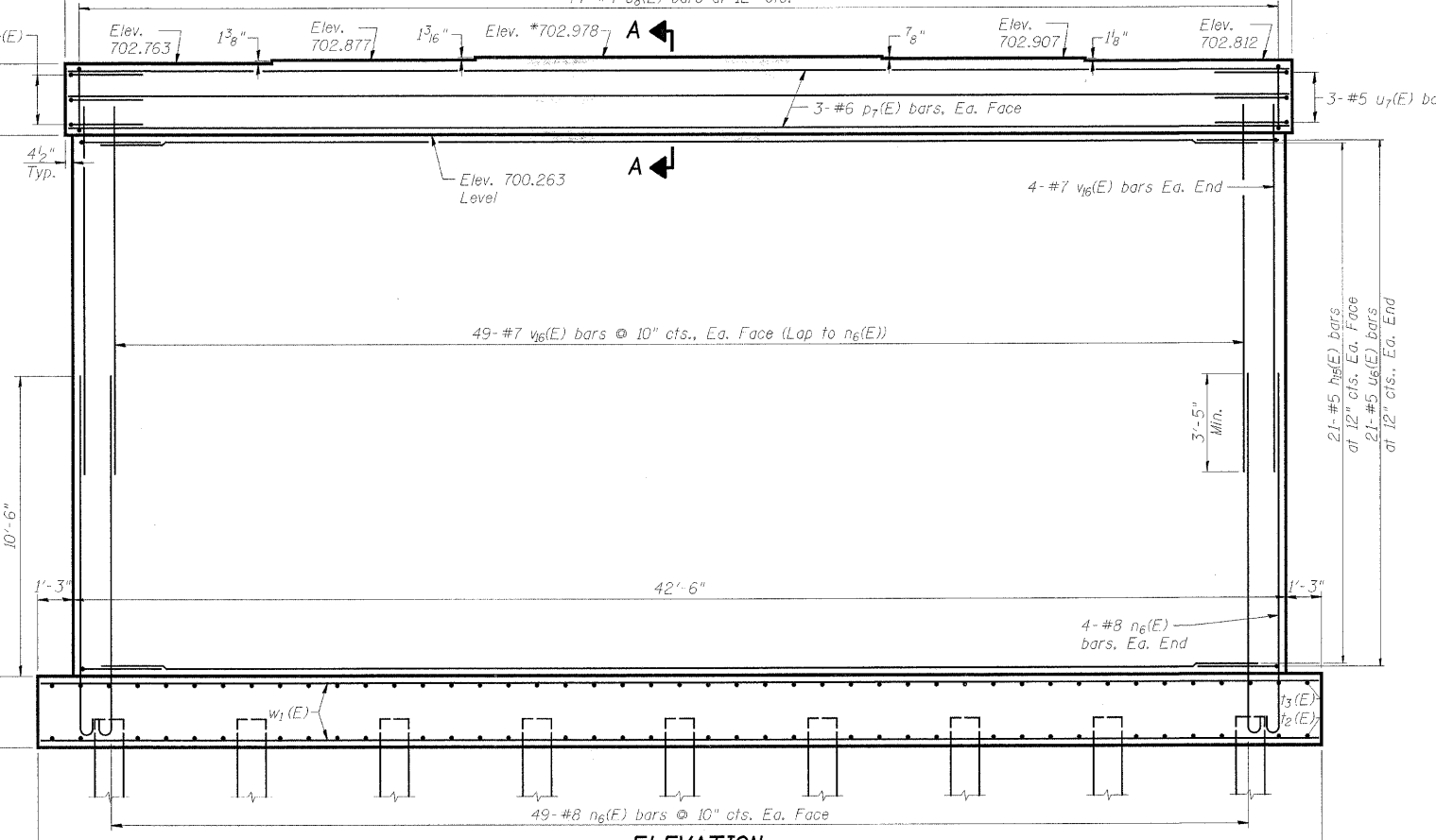
BAR n₆(E)



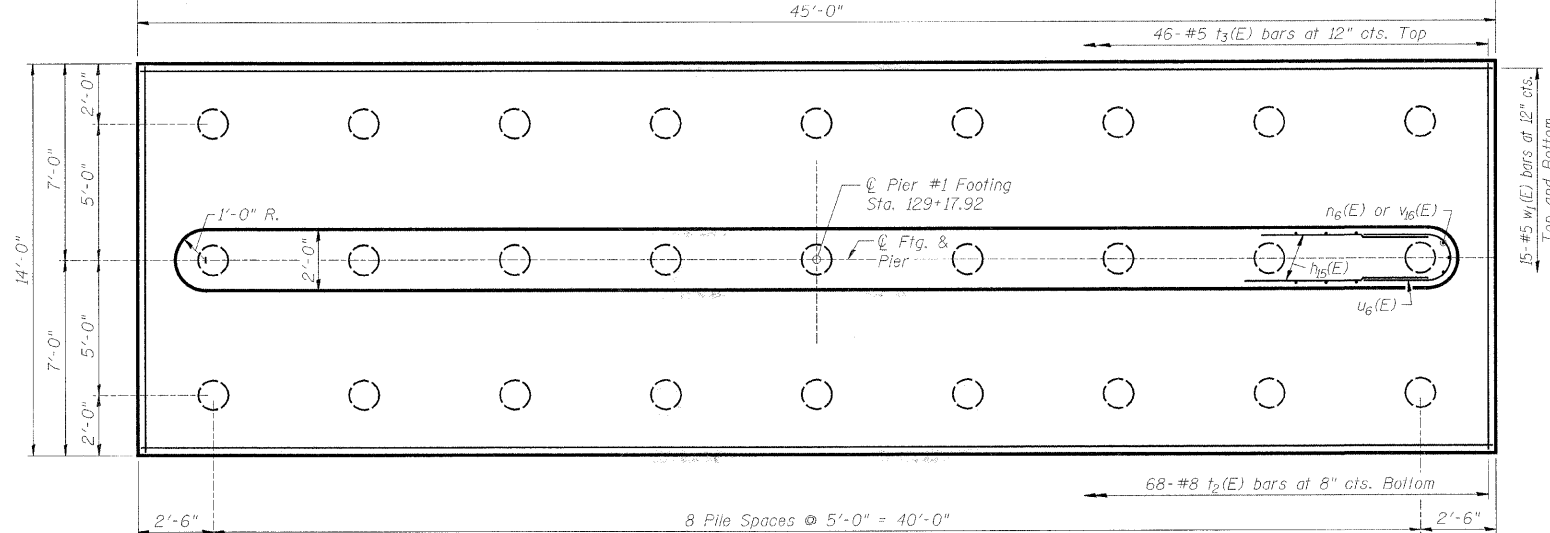
BAR s₈(E)



END VIEW



ELEVATION



FOOTING PLAN

PILE DATA

Type: 12 in. Dia. x 0.25' Walls
 Nominal Required Bearing: 270 kips
 Allowable Resistance Available: 90 kips
 Est. Length: 38'
 No. Production Piles: 26
 No. Test Piles: 1

SIZE	MIN. LAP
#4	1'-8"
#5	2'-2"
#6	2'-7"
#7	3'-5"
#8	4'-6"

BILL OF MATERIAL-PIER #2

Bar	No.	Size	Length	Shape
h ₆ (E)	42	#5	40'-6"	—
n ₆ (E)	106	#8	13'-8"	U
p ₇ (E)	6	#6	42'-8"	—
s ₈ (E)	44	#4	9'-9"	□
t ₂ (E)	68	#8	13'-8"	—
t ₃ (E)	46	#5	13'-8"	—
u ₆ (E)	42	#5	9'-4"	U
u ₇ (E)	6	#5	7'-1"	U
v ₆ (E)	106	#7	14'-10"	—
w ₁ (E)	30	#5	44'-8"	—
Cofferdam Excavation	Cu. Yd.		292	
Cofferdams	Each		1	
Concrete Structures	Cu. Yd.		134.6	
Reinforcement Bars, Epoxy Coated	Lbs.		14,520	
Furnishing Metal Shell Piles, 12"	Foot		988	
Driving Piles	Foot		988	
Test Pile-Metal Shell	Each		1	

NOTES:

Reinforcement Bars designated (E) shall be epoxy coated.
 Space Reinforcement in cap to miss anchor bolts.
 All edges shall have standard 3/4" chamfer except as noted.
 *Pour steps monolithically with cap.

PIER #2
BELTLINE ROAD OVER KISHWAUKEE RIVER
FAU ROUTE 5154 SECTION 04-00343-00-BR
WINNEBAGO COUNTY
STA. 129+89 (S.N. 101-017D)