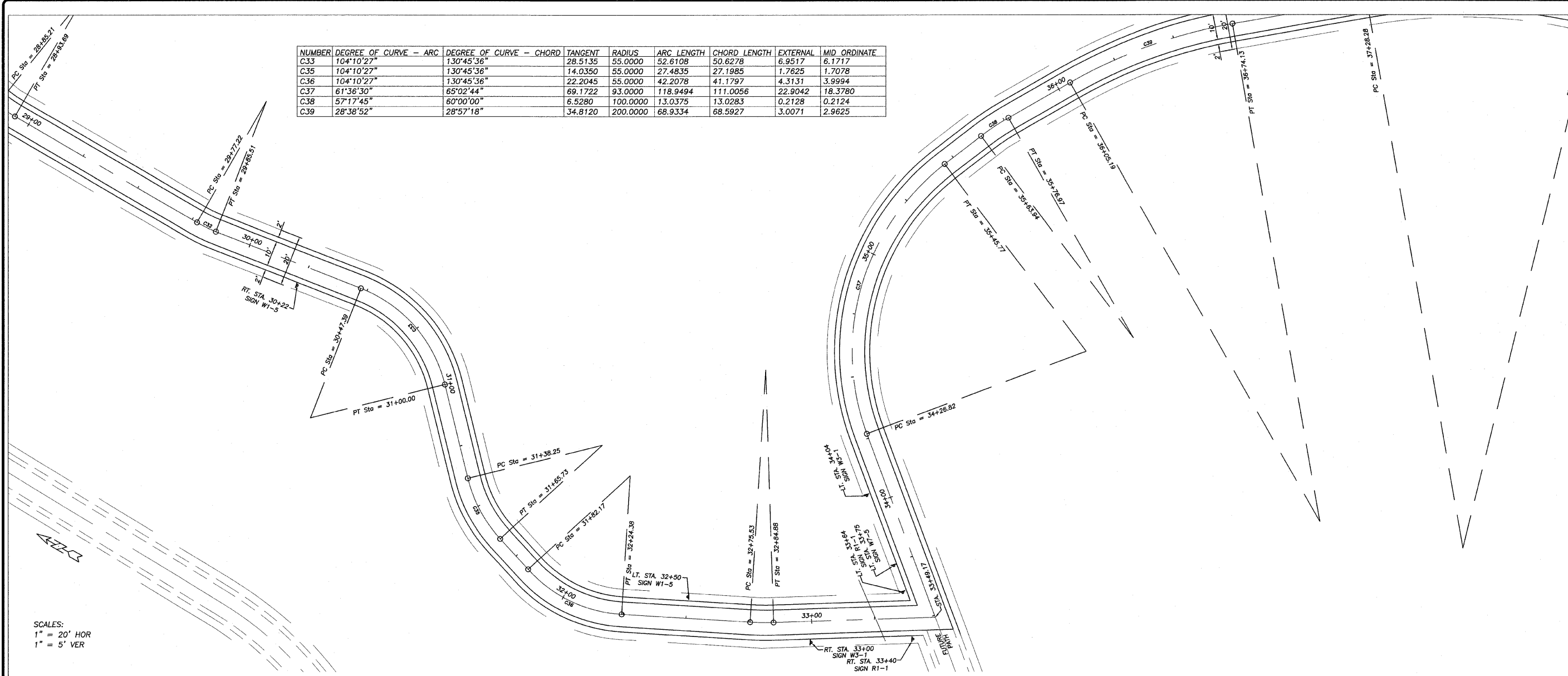
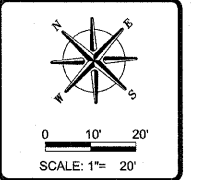


NUMBER	DEGREE OF CURVE - ARC	DEGREE OF CURVE - CHORD	TANGENT	RADIUS	ARC LENGTH	CHORD LENGTH	EXTERNAL	MID ORDINATE
C.33	104°10'27"	130°45'36"	28.5135	55.0000	52.6108	50.6278	6.9517	8.1717
C.35	104°10'27"	130°45'36"	14.0350	55.0000	27.4835	27.1985	1.7625	1.7078
C.36	104°10'27"	130°45'36"	22.2045	55.0000	42.2078	41.1797	4.3131	3.9994
C.37	61°36'30"	65°02'44"	69.1722	93.0000	118.9494	111.0056	22.9042	18.3780
C.38	57°17'45"	60°00'00"	6.5280	100.0000	13.0375	13.0283	0.2128	0.2124
C.39	28°38'52"	28°57'18"	34.8120	200.0000	68.9334	68.5927	3.0071	2.9625



SCALES:
 1" = 20' HOR
 1" = 5' VER

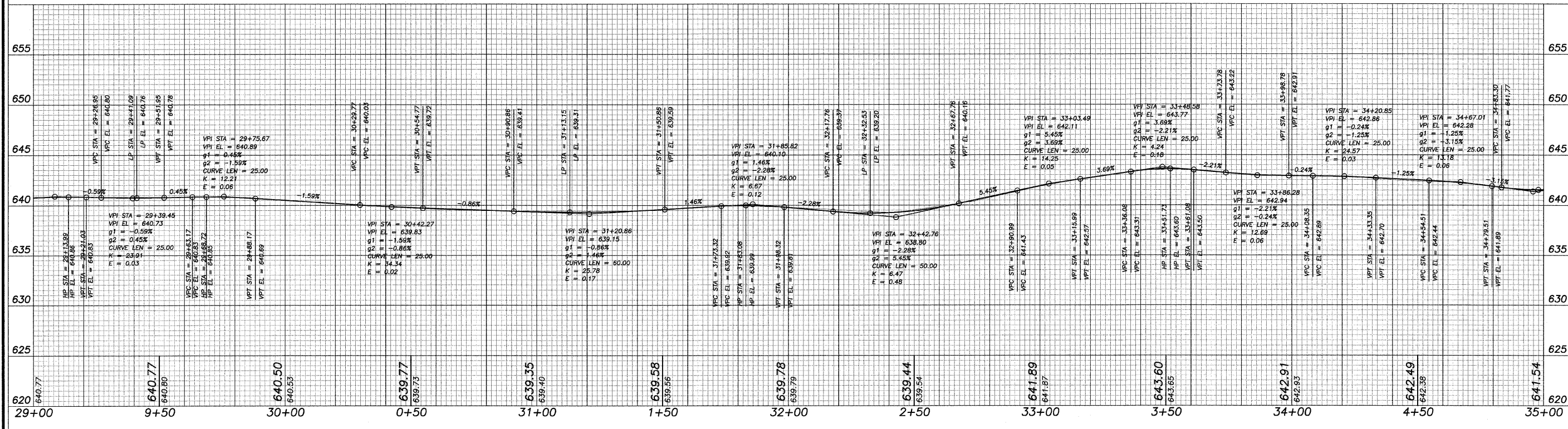


REVISIONS	DATE	BY

DESIGNED BY:	DAB
DRAWN BY:	BDS
CHECKED BY:	
DATE:	20 OCT 08

wendler
 GROUND-BREAKING SOLUTIONS
 engineers - surveyors - scientists
 www.wendlergs.com ph: 815.286.2261
 Illinois Professional Design Firm No. 194-000948

PAVING PLANS
 OF
 SHARED MULTI-USE PATH
 FOR
 STERLING PARK DISTRICT



SHEET TITLE
PLAN & PROFILE

JOB NUMBER
 204005

DATE
 06/10/2008

SHEET NO.
9 of 15