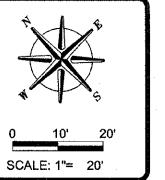


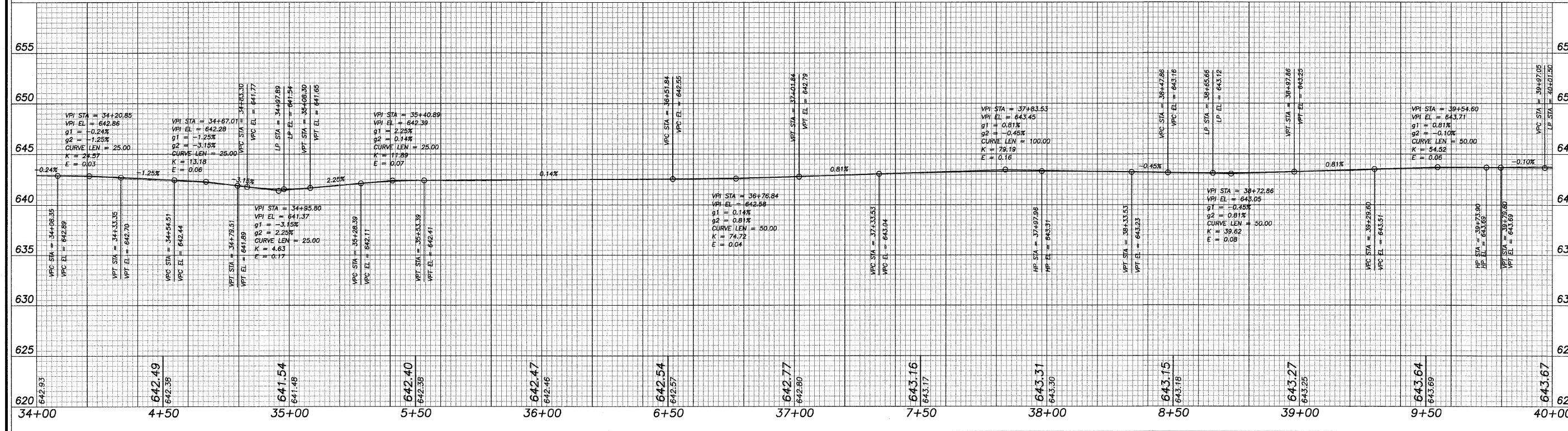
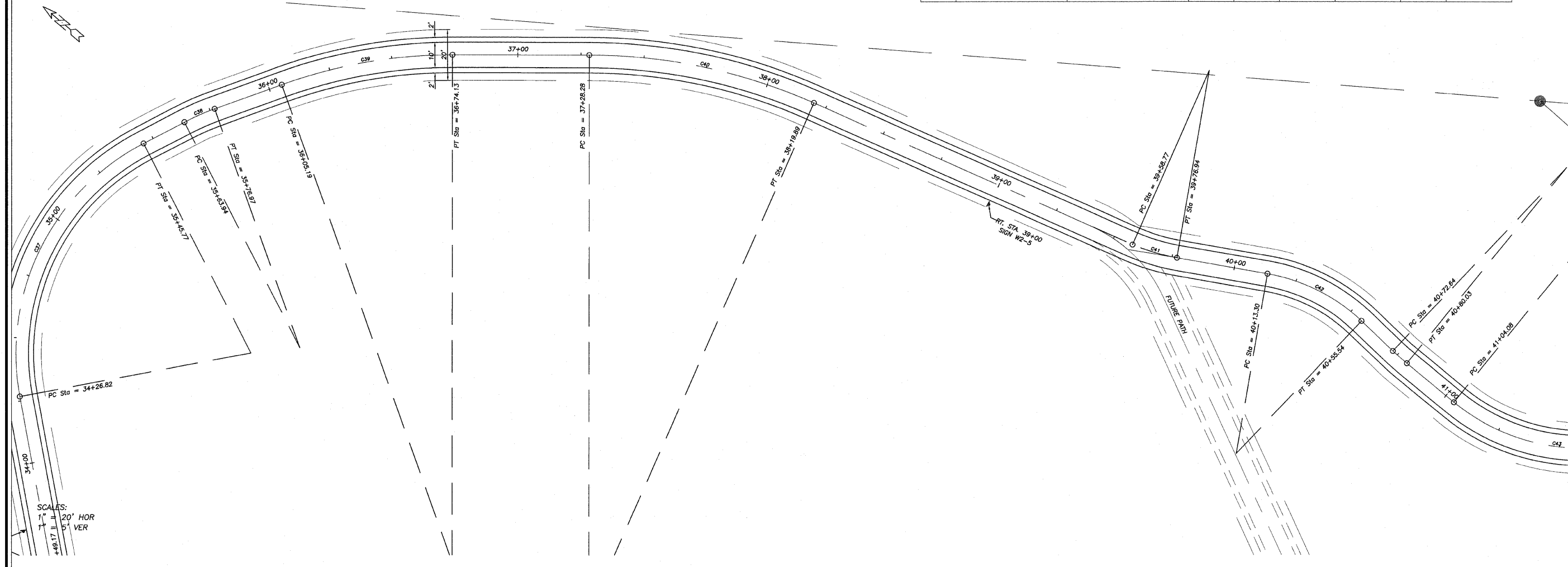
NUMBER	DEGREE OF CURVE - ARC	DEGREE OF CURVE - CHORD	TANGENT	RADIUS	ARC LENGTH	CHORD LENGTH	EXTERNAL	MID ORDINATE
C37	61°36'30"	65°02'44"	69.1722	93.0000	118.9494	111.0056	22.9042	18.3780
C38	57°17'45"	60°00'00"	6.5280	100.0000	13.0375	13.0283	0.2128	0.2124
C39	28°38'52"	28°57'18"	34.8120	200.0000	68.9334	68.5927	3.0071	2.9625
C40	26°02'37"	26°16'23"	46.4771	220.0000	91.6072	90.9468	4.8558	4.7509
C41	76°23'40"	83°37'14"	9.2264	75.0000	18.3605	18.3147	0.5654	0.5611
C42	79°34'39"	87°57'57"	21.7471	72.0000	42.2395	41.6364	3.2126	3.0754
C43	71°37'11"	77°21'52"	50.0458	80.0000	89.4418	84.8557	14.3641	12.1776



REVISIONS	DATE	BY
	20	OCT 08

DESIGNED BY:	DAB
DRAWN BY:	BDS
CHECKED BY:	
DATE:	

**wendler**  
 GROUND BREAKING SOLUTIONS  
 engineers - surveyors - scientists  
 www.wendlergs.com ph: 815.288.2261  
 Illinois Professional Design Firm No. 184-000848



PAVING PLANS  
 OF  
 SHARED MULTI-USE PATH  
 FOR  
 STERLING PARK DISTRICT

SHEET TITLE  
**PLAN &  
 PROFILE**

JOB NUMBER  
 204005

DATE  
 06/10/2008

SHEET NO.  
**10 of 15**