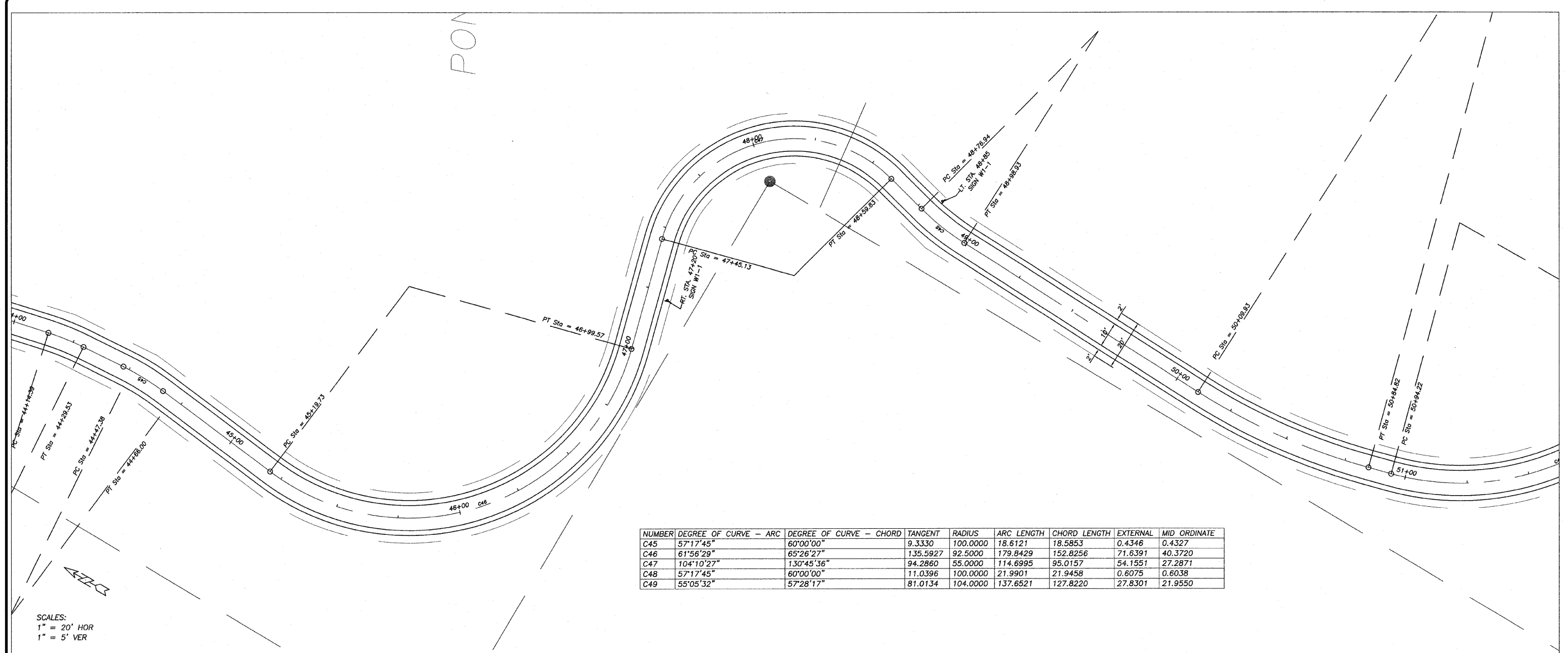


REVISION	DATE	BY
	20 OCT 08	

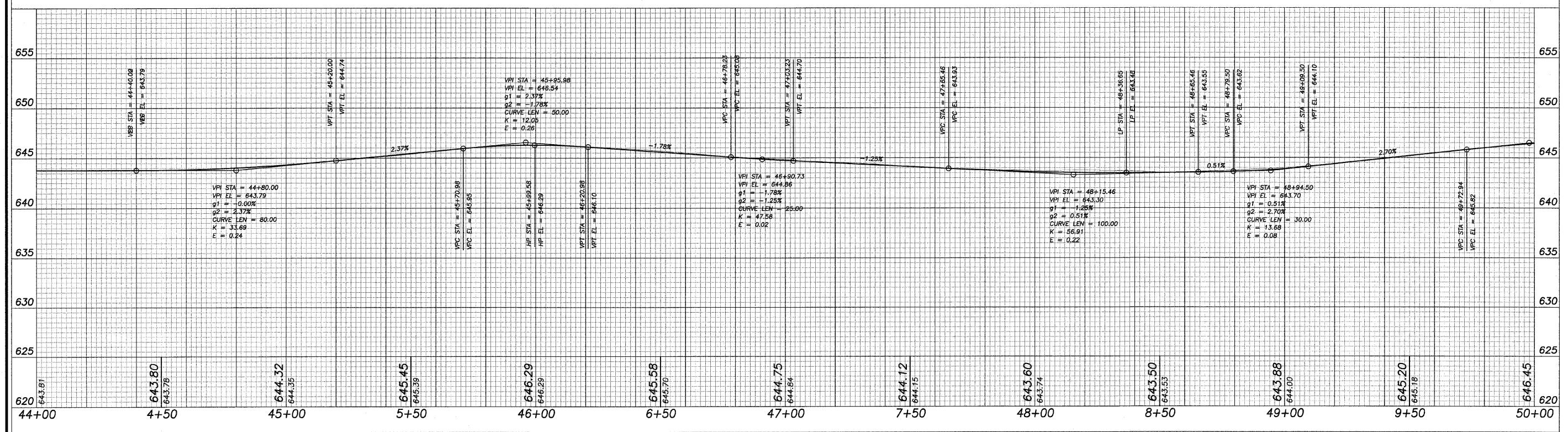
DESIGNED BY	DAB
DRAWN BY	BDS
CHECKED BY	
SUBMITTED BY	
BOOK NO.	

**wendler**  
 GROUND-BREAKING SOLUTIONS  
 engineers - surveyors - scientists  
 www.wendlergs.com ph: 815.288.2281  
 Illinois Professional Design Firm No. 184-000948



NUMBER	DEGREE OF CURVE - ARC	DEGREE OF CURVE - CHORD	TANGENT	RADIUS	ARC LENGTH	CHORD LENGTH	EXTERNAL	MID ORDINATE
C45	57°17'45"	60°00'00"	9.3330	100.0000	18.6121	18.5853	0.4346	0.4327
C46	61°56'29"	65°26'27"	135.5927	92.5000	179.8429	152.8256	71.6391	40.3720
C47	104°10'27"	130°45'36"	94.2860	55.0000	114.6995	95.0157	54.1551	27.2871
C48	57°17'45"	60°00'00"	11.0396	100.0000	21.9901	21.9458	0.6075	0.6038
C49	55°05'32"	57°28'17"	81.0134	104.0000	137.6521	127.8220	27.8301	21.9550

SCALES:  
 1" = 20' HOR  
 1" = 5' VER



PAVING PLANS  
 OF  
 SHARED MULTI-USE PATH  
 FOR  
 STERLING PARK DISTRICT

SHEET TITLE  
**PLAN & PROFILE**

JOB NUMBER  
 204005

DATE  
 06/10/2008

SHEET NO.  
**12 of 15**