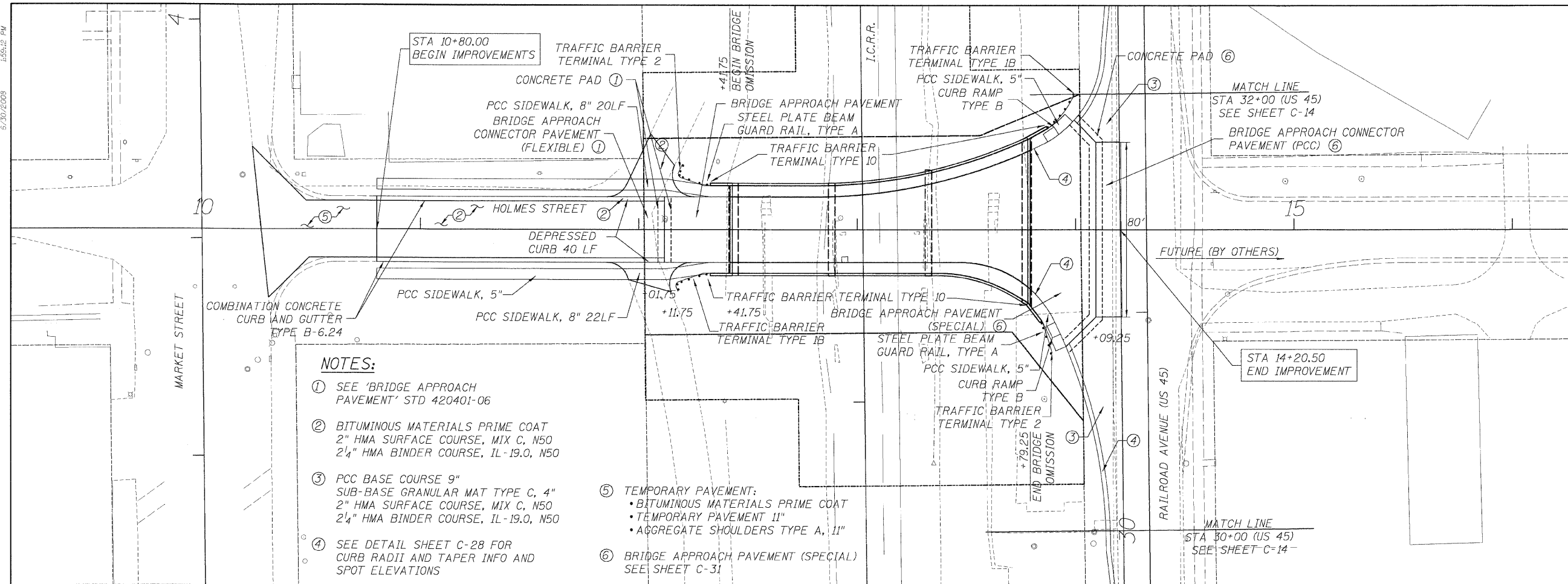
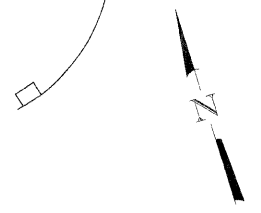


6/30/2008 1:59:2 PM

P:\00000001\0110000 CAD\Sheet\12.PP_HOLMES.dgn

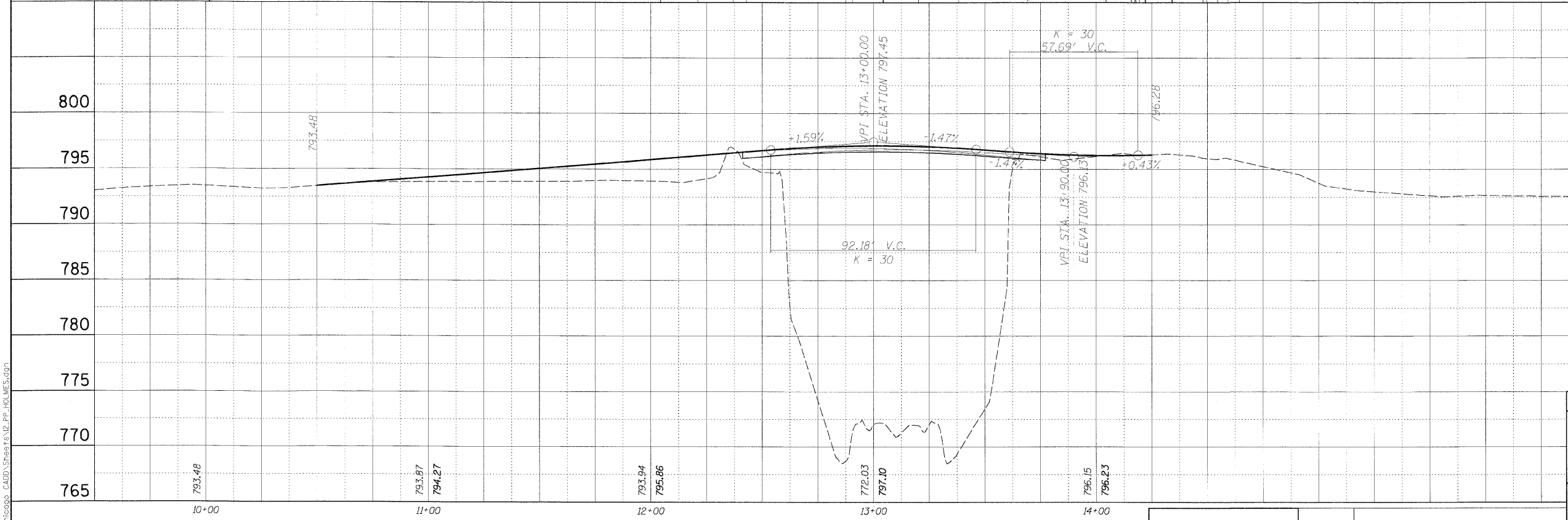
FAR. RTE.	SECTION	COUNTY	TOTAL SHEETS	SHEET NO.
• 00-00043-00-BR		FORD	51	12
FED. ROAD DIST. NO. 3		ILLINOIS	CONTRACT NO. 87198	

• HOLMES ST.
PINE ST.
CENTER ST.



NOTES:

- ① SEE 'BRIDGE APPROACH PAVEMENT' STD 420401-06
- ② BITUMINOUS MATERIALS PRIME COAT
2" HMA SURFACE COURSE, MIX C, N50
2 1/4" HMA BINDER COURSE, IL-19.0, N50
- ③ PCC BASE COURSE 9"
SUB-BASE GRANULAR MAT TYPE C, 4"
2" HMA SURFACE COURSE, MIX C, N50
2 1/4" HMA BINDER COURSE, IL-19.0, N50
- ④ SEE DETAIL SHEET C-28 FOR CURB RADII AND TAPER INFO AND SPOT ELEVATIONS
- ⑤ TEMPORARY PAVEMENT:
• BITUMINOUS MATERIALS PRIME COAT
• TEMPORARY PAVEMENT 11"
• AGGREGATE SHOULDERS TYPE A, 11"
- ⑥ BRIDGE APPROACH PAVEMENT (SPECIAL) SEE SHEET C-31



ROADWAY PLAN AND PROFILE
HOLMES STREET
HOLMES STREET OVER
ILLINOIS CENTRAL RAILROAD
CITY OF PAXTON, FORD COUNTY

DESIGN BY KLA	DRAWING NO. C-12	Job# C-93-016-01
DRAWN BY DWQ	DATE 7/1/08	SCALE H: 1"=25'
CHECKED BY JAH	DATE	SCALE V: 1"=5'



DATE	REVISIONS