

6/30/2008 1:59:15 PM

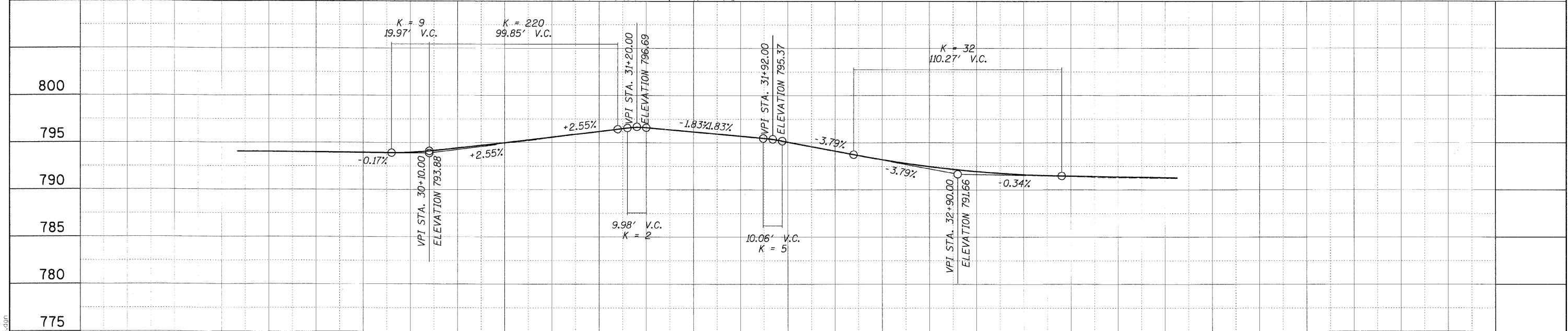
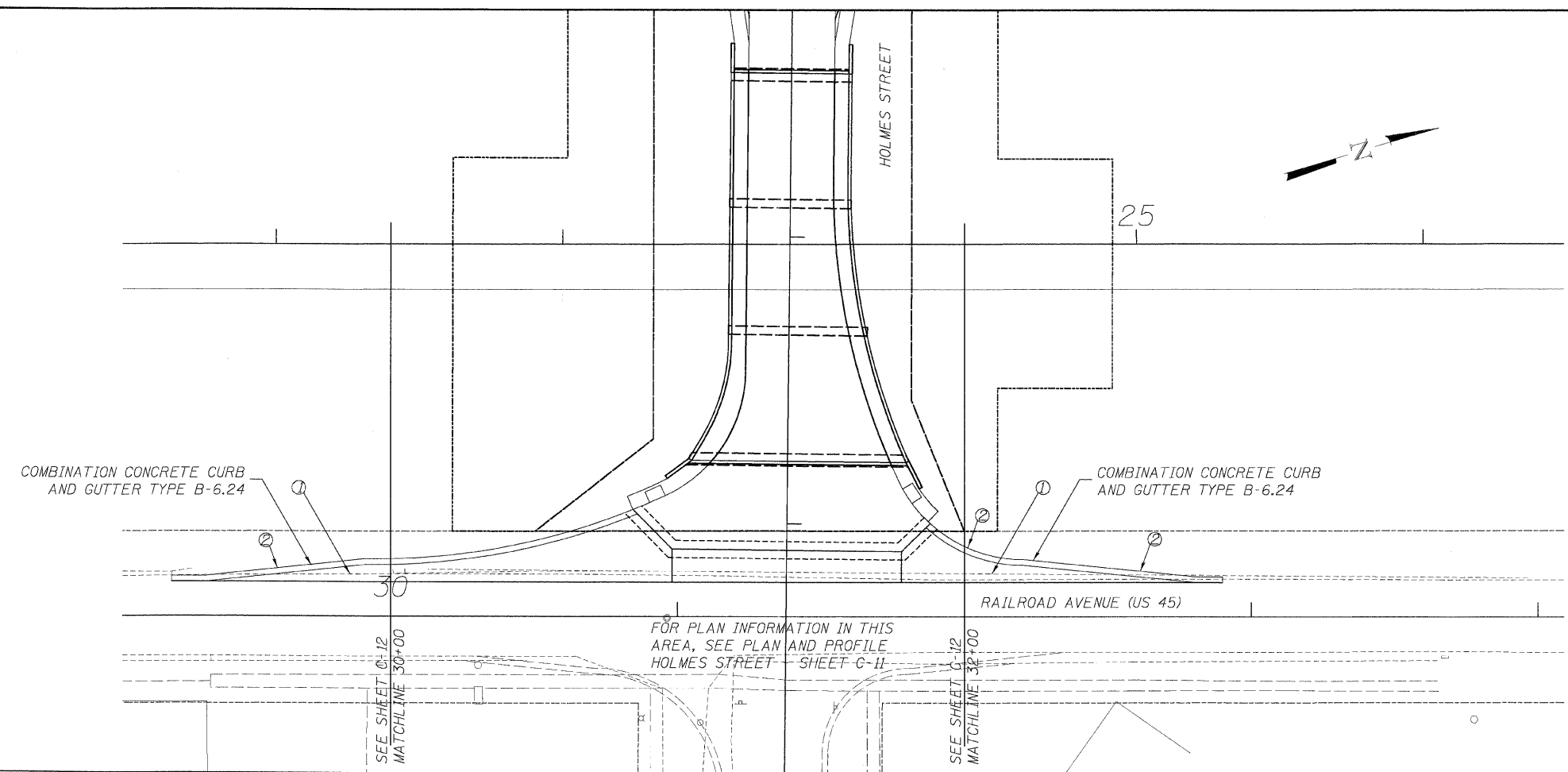
P:\0009001\chicago CAD\Drawings\14\_PP\_US45.dwg

F.P. RTE.	SECTION	COUNTY	TOTAL SHEETS	SHEET NO.
• 00-00043-00-BR		FORD	51	14
FED. ROAD DIST. NO. 3	ILLINOIS	CONTRACT NO. 87198		

• HOLMES ST.  
PINE ST.  
CENTER ST.

**NOTES:**

- ① PCC BASE COURSE 9"  
SUB-BASE GRANULAR MATERIAL 4"  
BIT CONC BINDER COURSE, MIX B, TYPE 2  
BIT CONC SURFACE COURSE, MIX D, TYPE 2
- ② SEE DETAIL SHEET C-28 FOR CURB RADII & TAPER INFO, AND SPOT ELEVATIONS



**PLAN AND PROFILE  
RAILROAD AVENUE (US 45)**  
HOLMES STREET OVER  
ILLINOIS CENTRAL RAILROAD  
CITY OF PAXTON, FORD COUNTY

DESIGN BY KLA	DRAWING NO. <b>C-14</b>	Job# C-93-016-01
DRAWN BY DWQ	DATE 7/1/08	DATE 7/1/08
CHECKED BY JAH	SCALE H: 1"=25' V: 1"=5'	



DATE	REVISIONS