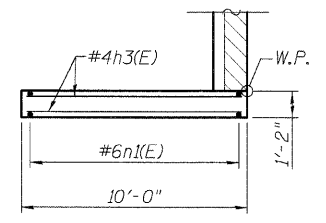
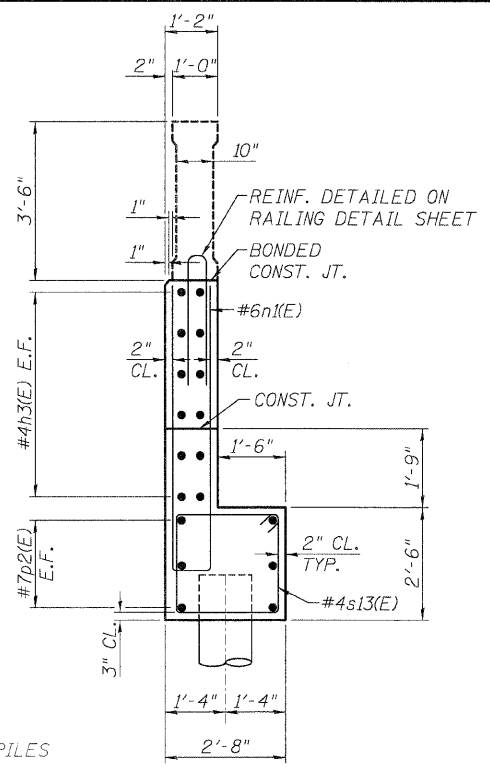


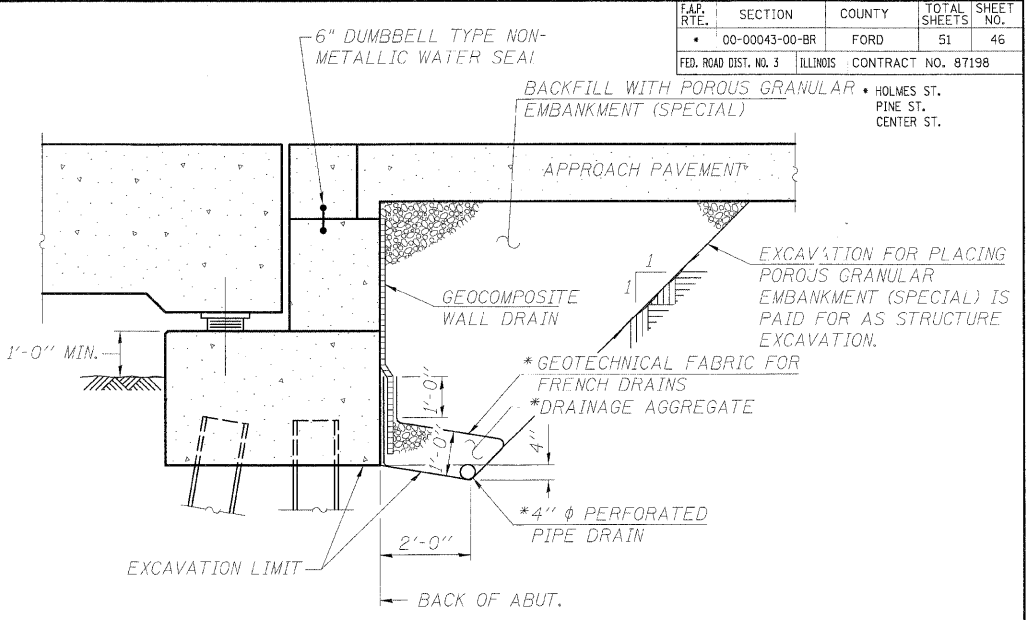
**WINGWALL ELEVATION**  
(SOUTH WINGWALL SHOWN)



**SECTION B-B**



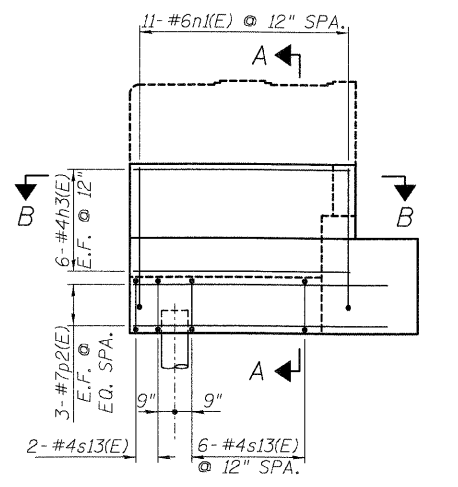
**SECTION A-A**



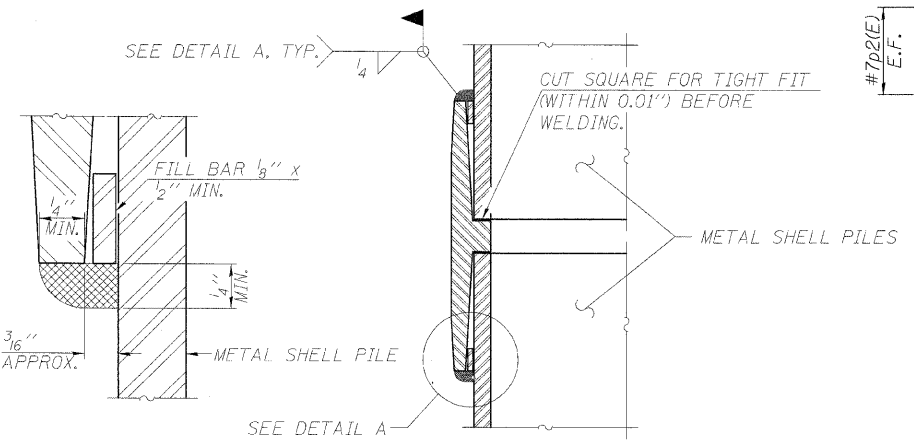
**ABUTMENT DRAINAGE AND WATERPROOFING**  
(HORIZ. DIM. @ RT. L'S)

\* INCLUDED IN THE COST OF PIPE UNDERDRAINS FOR STRUCTURES.

ALL DRAINAGE SYSTEM COMPONENTS SHALL EXTEND PARALLEL TO THE ABUTMENT BACK WALL UNTIL THEY INTERSECT THE WINGWALLS OR 2'-0" FROM THE END OF THE WINGWALLS WHEN THE WINGS ARE PARALLEL TO THE ABUTMENT. THE PIPE SHALL EXTEND UNDER THE WINGWALL, IF NECESSARY, UNTIL INTERSECTING THE SIDE SLOPES. THE PIPES SHALL DRAIN INTO CONCRETE HEADWALLS. (SEE ARTICLE 601.05 OF THE STANDARD SPECIFICATIONS AND HIGHWAY STANDARD 601101).



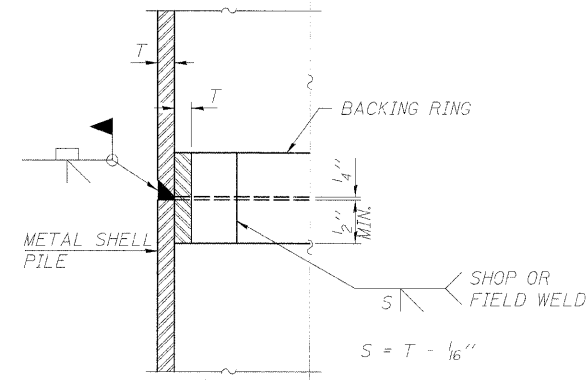
**WINGWALL REINFORCEMENT**



**DETAIL A**

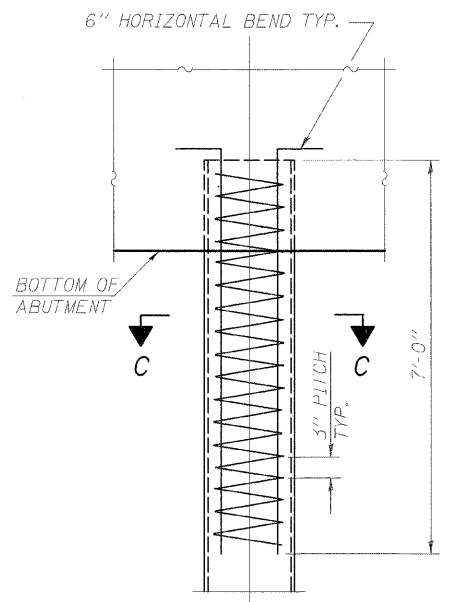
THE 1/8" X 1/2" MIN. FILL BAR MAY BE CONSTRUCTED OF 2 BARS WITH A 1/8" MAX. GAP BETWEEN THEM. PILE SEGMENTS SHALL BE DRIVEN TO SOLID CONTACT WITH SPLICER BEFORE WELDING.

**WELDED COMMERCIAL SPLICE**

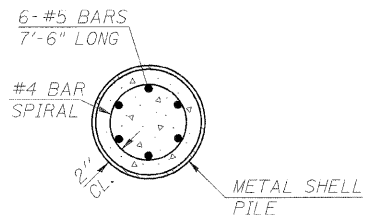


**COMPLETE PENETRATION WELD SPLICE**

BACKING RING MADE FROM PILE SHELL. REMOVE SEGMENT TO ALLOW REDUCING CIRCUMFERENCE AND VERTICALLY REJOIN WITH PARTIAL JOINT PENETRATION WELD.



**ELEVATION**



**SECTION C-C**

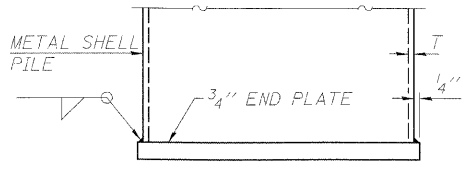
THE METAL SHELL PILES SHALL BE ACCORDING TO ASTM A 252 GRADE 3. THE COST OF REINFORCEMENT IS INCLUDED WITH FURNISHING PILES.

**METAL SHELL REINFORCEMENT**



**METAL SHELL PILE TABLE**

DESIGNATION	WALL THICKNESS T	WEIGHT PER FOOT (LBS./FT.)	INSIDE VOLUME (YD. <sup>3</sup> /FT.)
PP14	0.250"	36.71	0.0368



**END PLATE ATTACHMENT**

**WEST ABUTMENT DETAILS**

HOLMES STREET OVER ILLINOIS CENTRAL RAILROAD CITY OF PAXTON, FORD COUNTY

DESIGN BY: DRS	DRAWING NO. S-13	Job# C-93-016-01
DRAWN BY: DJR		DATE 7/1/08
CHECKED BY: BAP		SCALE AS SHOWN



DATE	REVISIONS

6/30/2008 4:58:47 PM P:\00000001\Chicago CAD\Sheets\AS3\_wabut.dgn