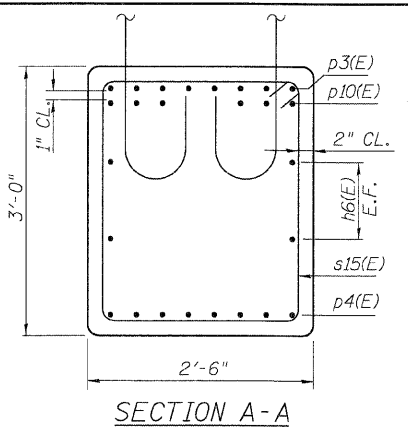
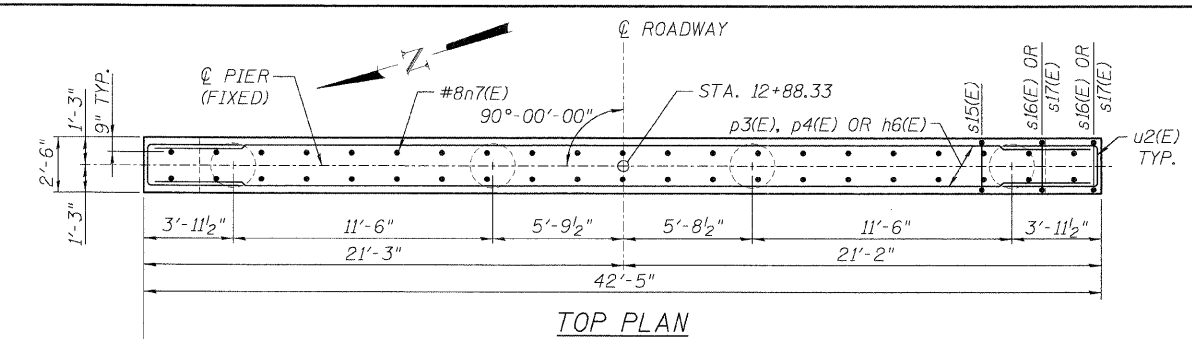


6/30/2008 15:55:52 PM P:\0009001\Chicago CAD\Sheet\316\_Perit.dgn

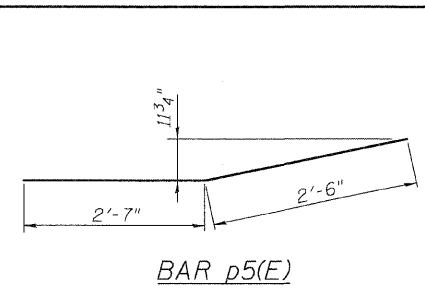
F.P. RTE.	SECTION	COUNTY	TOTAL SHEETS	SHEET NO.
00-00043-00-BR	FORD	ILLINOIS	51	49
FED. ROAD DIST. NO. 3		CONTRACT NO. 87198		



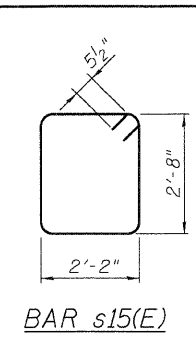
SECTION A-A



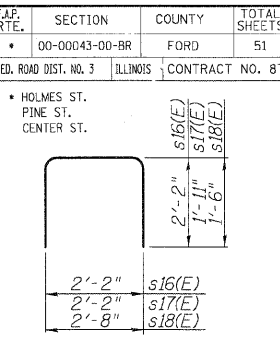
TOP PLAN



BAR p5(E)



BAR s15(E)



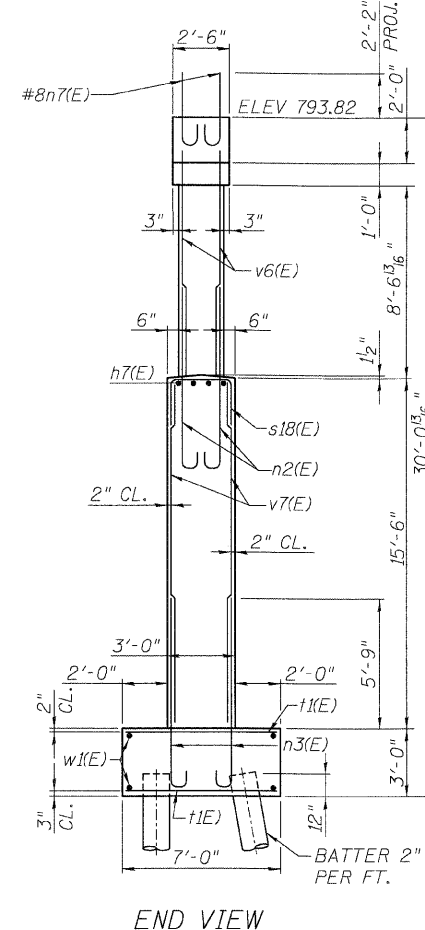
BARS s16(E), s17(E) AND s18(E)

PILE DATA

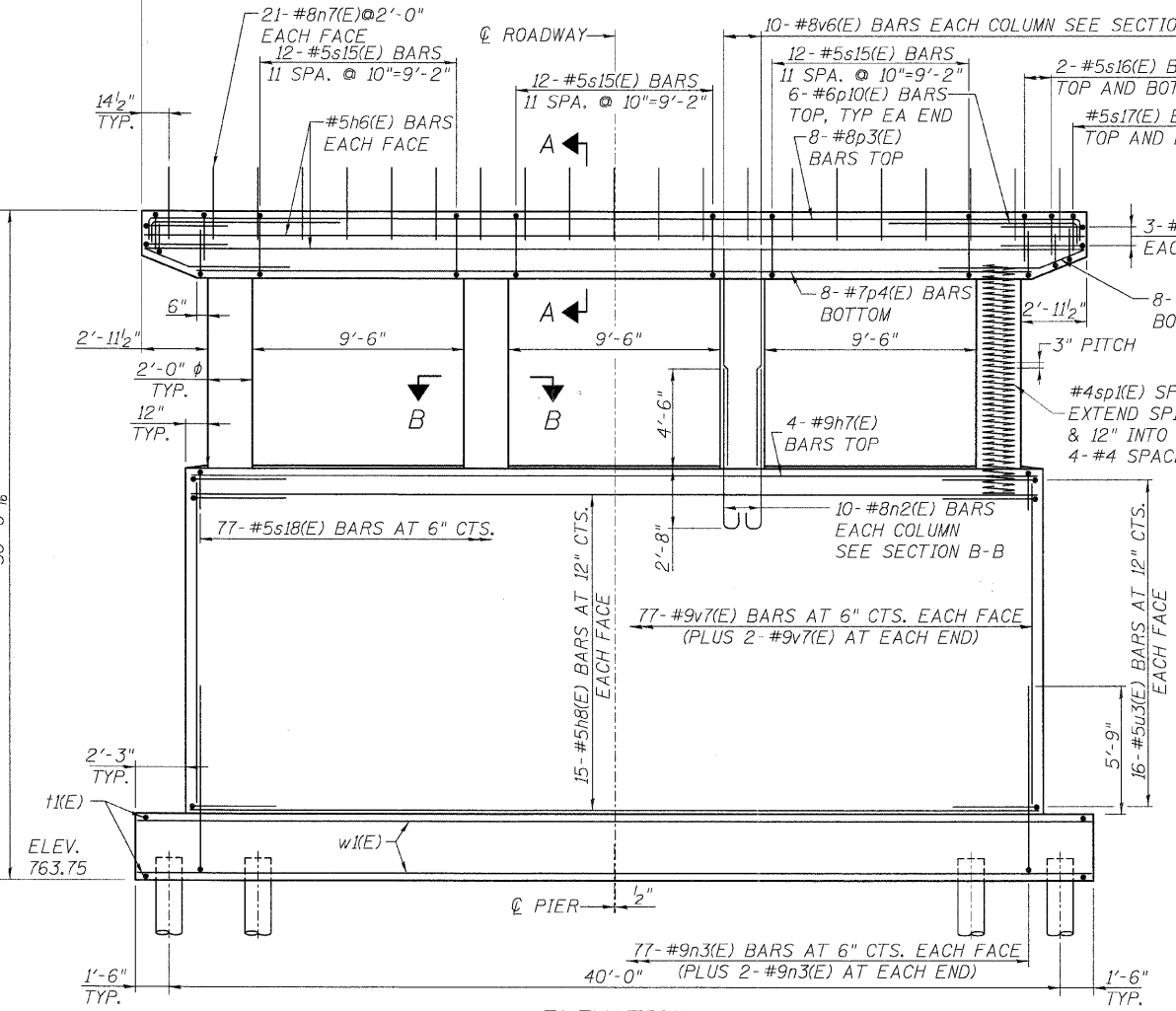
TYPE: 14" METAL SHELL CONCRETE PILES  
 CAPACITY: 50 TONS  
 ESTIMATED LENGTH: 45 FEET  
 NUMBER REQUIRED: 21 + 1 TEST PILES

PIER 1  
 BILL OF MATERIAL

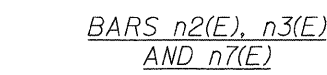
Bar	No.	Size	Length	Shape
h6(E)	4	#5	42'-1"	—
h7(E)	4	#9	38'-2"	—
h8(E)	30	#5	38'-2"	—
n2(E)	40	#8	8'-1"	U
n3(E)	158	#9	9'-9"	U
n7(E)	42	#8	4'-4"	U
p3(E)	8	#8	45'-5"	L
p4(E)	8	#7	37'-6"	L
p5(E)	16	#6	5'-1"	L
p10(E)	12	#6	13'-0"	L
s15(E)	36	#5	10'-7"	□
s16(E)	8	#5	6'-6"	□
s17(E)	4	#5	6'-0"	□
s18(E)	77	#5	5'-8"	□
sp1(E)	4	#4	219'-11"	
t1(E)	88	#6	6'-8"	—
u2(E)	6	#6	9'-3"	U
u3(E)	32	#5	8'-6"	U
v6(E)	40	#8	10'-9"	—
v7(E)	158	#9	15'-3"	—
w1(E)	16	#5	42'-8"	—
STRUCTURE EXCAVATION	CU. YD.		93	
CONCRETE STRUCTURES	CU. YD.		115	
REINFORCEMENT BARS, EPOXY COATED	POUND		23234	
FURNISHING METAL SHELL PILES 14"	FOOT		945	
TEST PILE MET. SHELLS	EACH		1	
DRIV. & FILLING SHELLS	FOOT		945	



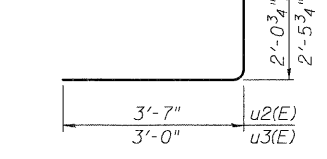
END VIEW



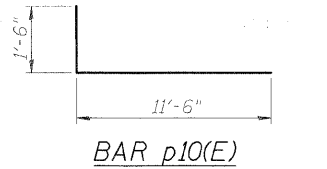
ELEVATION (LOOKING EAST)



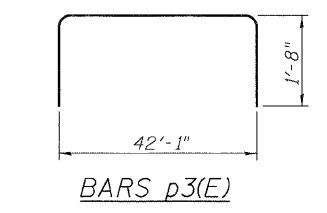
BARS n2(E), n3(E) AND n7(E)



BARS u2(E) AND u3(E)

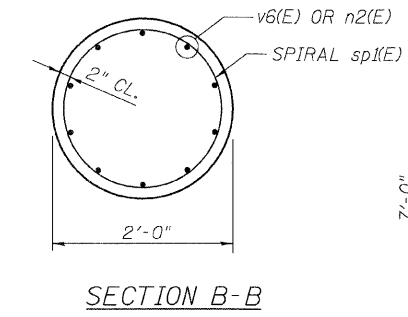


BAR p10(E)

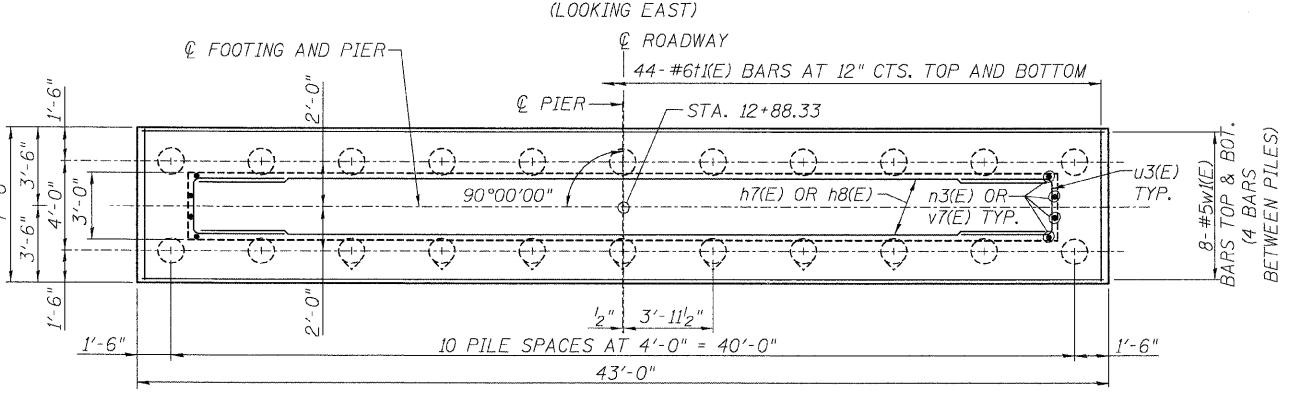


BARS p3(E)

- NOTES:
- REINFORCEMENT BARS DESIGNATED (E) SHALL BE EPOXY COATED.
  - ALL EDGES SHALL HAVE STANDARD 3/4" CHAMFER.
  - FOR PILE REINFORCEMENT DETAILS, SEE METAL SHELL REINFORCEMENT DETAIL SHEET S-13.
  - CONTRACTOR SHALL DRIVE ALL PILES IN THE ROW CLOSEST TO THE TRACK BEFORE OTHER PIER PILES.



SECTION B-B



FOOTING PLAN



DATE	REVISIONS

**PIER 1**  
 HOLMES STREET OVER  
 ILLINOIS CENTRAL RAILROAD  
 CITY OF PAXTON, FORD COUNTY

DESIGN BY BAP	DRAWING NO. S-16	Job# C-93-016-01
DRAWN BY DJR	DATE 7/1/08	SCALE AS SHOWN
CHECKED BY DRS		