

F.A.P. RTE.	SECTION	COUNTY	TOTAL SHEETS	SHEET NO.
64		PEORIA	186	25

STA.	TO STA.
FED. ROAD DIST. NO.	ILLINOIS IL RTE 29

* (10,12)RS-6;11RS-4;11OB1BR

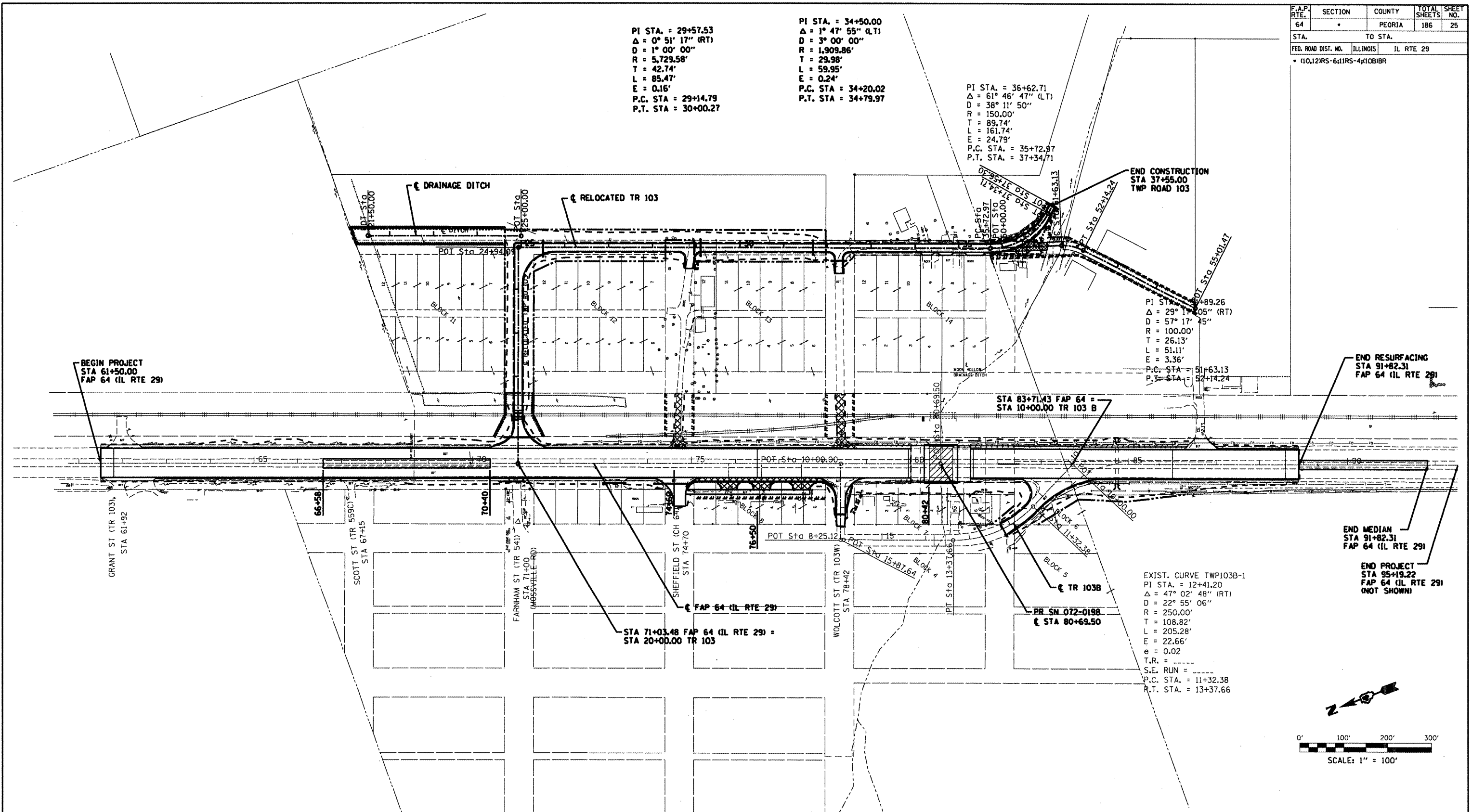
PI STA. = 29+57.53
 $\Delta = 0^\circ 51' 17''$ (RT)
 D = 1° 00' 00"
 R = 5,729.58'
 T = 42.74'
 L = 85.47'
 E = 0.16'
 P.C. STA = 29+14.79
 P.T. STA = 30+00.27

PI STA. = 34+50.00
 $\Delta = 1^\circ 47' 55''$ (LT)
 D = 3° 00' 00"
 R = 1,909.86'
 T = 29.98'
 L = 59.95'
 E = 0.24'
 P.C. STA = 34+20.02
 P.T. STA = 34+79.97

PI STA. = 36+62.71
 $\Delta = 61^\circ 46' 47''$ (LT)
 D = 38° 11' 50"
 R = 150.00'
 T = 89.74'
 L = 161.74'
 E = 24.79'
 P.C. STA = 35+72.87
 P.T. STA = 37+34.71

PI STA. = 51+89.26
 $\Delta = 29^\circ 11' 05''$ (RT)
 D = 57° 17' 45"
 R = 100.00'
 T = 26.13'
 L = 51.11'
 E = 3.36'
 P.C. STA = 51+63.13
 P.T. STA = 52+14.24

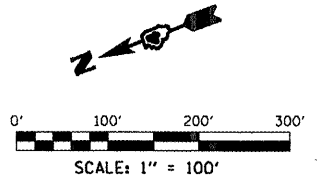
EXIST. CURVE TWP103B-1
 PI STA. = 12+41.20
 $\Delta = 47^\circ 02' 48''$ (RT)
 D = 22° 55' 06"
 R = 250.00'
 T = 108.82'
 L = 205.28'
 E = 22.66'
 e = 0.02
 T.R. = ----
 S.E. RUN = ----
 P.C. STA. = 11+32.38
 P.T. STA. = 13+37.66



END RESURFACING
 STA 91+82.31
 FAP 64 (IL RTE 29)

END MEDIAN
 STA 91+82.31
 FAP 64 (IL RTE 29)

END PROJECT
 STA 95+19.22
 FAP 64 (IL RTE 29)
 (NOT SHOWN)



REVISIONS	
NAME	DATE

COOMBE-BLOXDORF P.C.
 Engineers / Land Surveyors
 Springfield, Illinois
 Design Firm License No. 184-002708

ILLINOIS DEPARTMENT OF TRANSPORTATION
GENERAL PLAN
 SCALE: DATE AUG. 2008
 DRAWN BY CFC
 CHECKED BY MCB/GLS

10/17/2008 9:15 AM