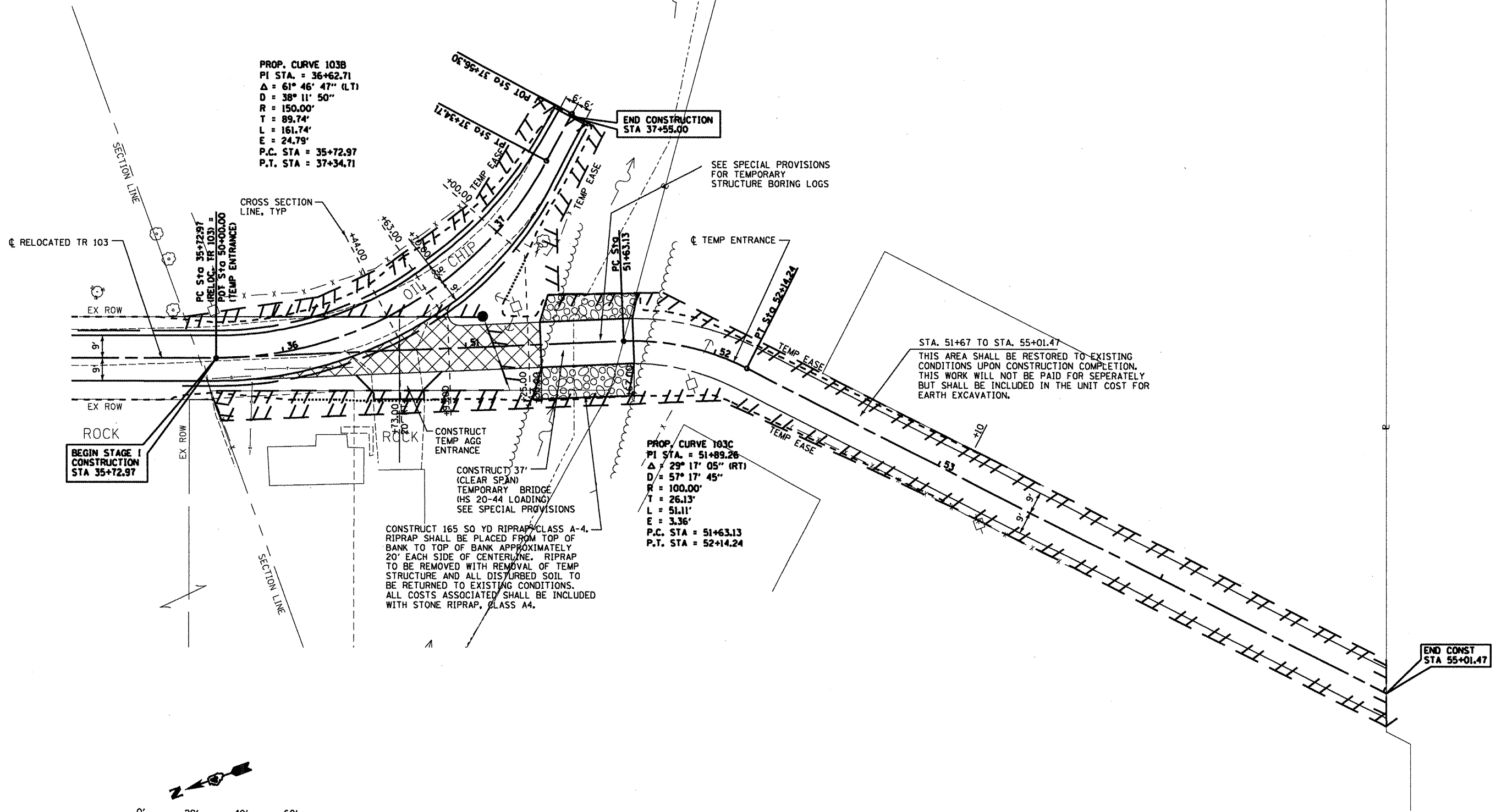


F.A.P. RTE.	SECTION	COUNTY	TOTAL SHEETS	SHEET NO.
64		PEORIA	186	34
STA.		TO STA.		
FED. ROAD DIST. NO.		ILLINOIS	IL RTE 29	
CONTRACT 88803		• (10,12/RS-6)1RS-4(10B)BR		



BEGIN STAGE I
CONSTRUCTION
STA 35+72.97

END CONSTRUCTION
STA 37+55.00

END CONST
STA 55+01.47

PROP. CURVE 103B
PI STA. = 36+62.71
Δ = 61° 46' 47" (LT)
D = 38' 11' 50"
R = 150.00'
T = 89.74'
L = 161.74'
E = 24.79'
P.C. STA = 35+72.97
P.T. STA = 37+34.71

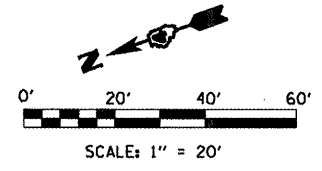
PROP. CURVE 103C
PI STA. = 51+89.26
Δ = 29° 17' 05" (RT)
D = 57' 17' 45"
R = 100.00'
T = 26.13'
L = 51.11'
E = 3.36'
P.C. STA = 51+63.13
P.T. STA = 52+14.24

STA. 51+67 TO STA. 55+01.47
THIS AREA SHALL BE RESTORED TO EXISTING
CONDITIONS UPON CONSTRUCTION COMPLETION.
THIS WORK WILL NOT BE PAID FOR SEPERATELY
BUT SHALL BE INCLUDED IN THE UNIT COST FOR
EARTH EXCAVATION.

CONSTRUCT 165 SQ YD RIPRAP CLASS A-4.
RIPRAP SHALL BE PLACED FROM TOP OF
BANK TO TOP OF BANK APPROXIMATELY
20' EACH SIDE OF CENTERLINE. RIPRAP
TO BE REMOVED WITH REMOVAL OF TEMP
STRUCTURE AND ALL DISTURBED SOIL TO
BE RETURNED TO EXISTING CONDITIONS.
ALL COSTS ASSOCIATED SHALL BE INCLUDED
WITH STONE RIPRAP, CLASS A4.

CONSTRUCT 37'
(CLEAR SPAN)
TEMPORARY BRIDGE
(HS 20-44 LOADING)
SEE SPECIAL PROVISIONS

SEE SPECIAL PROVISIONS
FOR TEMPORARY
STRUCTURE BORING LOGS



REVISIONS	
NAME	DATE

ILLINOIS DEPARTMENT OF TRANSPORTATION

**TEMPORARY
ENTRANCE**

SCALE: VERT.
DATE: HORIZ.

DRAWN BY
CHECKED BY