

F.A.P. RTE.	SECTION	COUNTY	TOTAL SHEETS	SHEET NO.
64		PEORIA	186	35
STA.		TO STA.		
FED. ROAD DIST. NO.		ILLINOIS IL RTE 29		

PRIOR TO STAGE I CONSTRUCTION
 CONSTRUCTION OF RELOCATED TRP ROAD 103 TO BE COMPLETED PRIOR TO STAGE CONSTRUCTION FOR FAP 64 (IL RT 29), STDS BLR-22 AND 70101 SHALL BE UTILIZED.

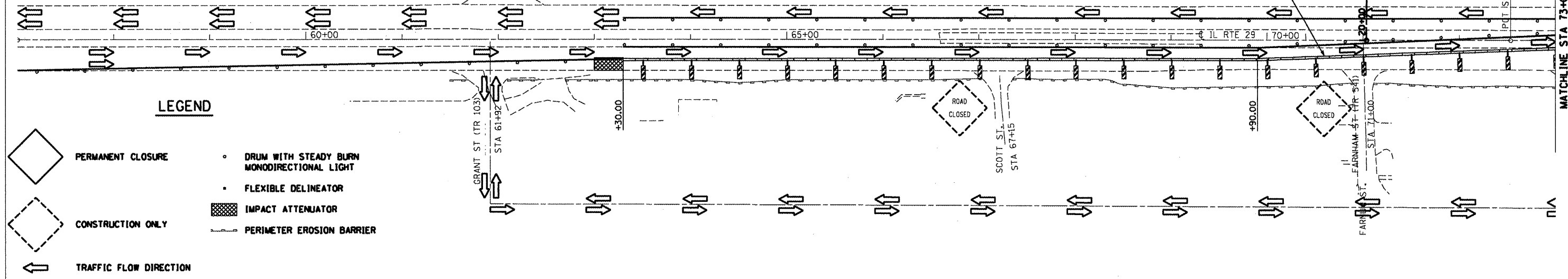
STAGE I SEQUENCE OF CONSTRUCTION
 AFTER CONSTRUCTION OF RELOCATED TR 103 IS COMPLETED, CLOSE E. SHEFFIELD ST. (PE) AND E. WOLCOTT ST. PLACE TEMPORARY CONCRETE BARRIERS AS SHOWN AND OTHER TRAFFIC CONTROL IN ACCORDANCE WITH TRAFFIC CONTROL STANDARD 701431.

STANDARDS

701011	701431
701101	702001
701421	704001
701426	BLR-22

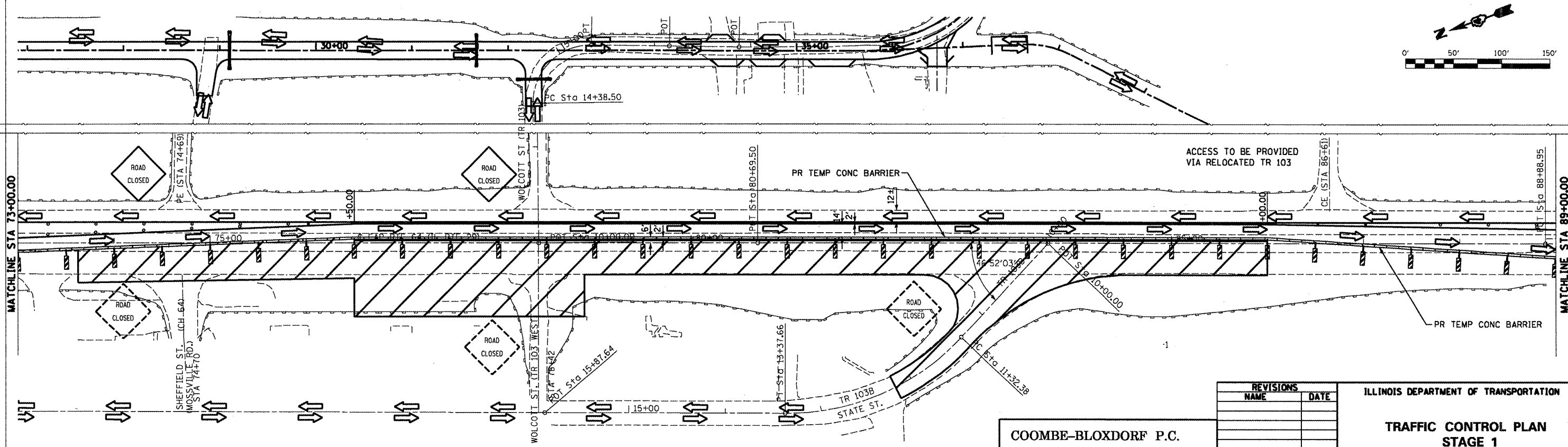
ANY MODIFICATIONS REQUIRED BY THE ENGINEER TO EXECUTE STANDARD 701431 TRAFFIC CONTROL WILL NOT BE PAID FOR SEPARATELY BUT WILL BE INCLUDED IN THE COST OF TRAFFIC CONTROL & PROTECTION STANDARD 701431.

DIRECT TRAFFIC TO STAGE I ROADWAY AND COMPLETE STAGE I STRUCTURAL WORK, PAVEMENT REMOVAL, PAVEMENT BUILD-UP, SHOULDER CONSTRUCTION, SIDEROAD IMPROVEMENT, GUARDRAIL CONSTRUCTION, AND DRAINAGE WORK AS SHOWN IN THE PLANS.



LEGEND

- PERMANENT CLOSURE
- CONSTRUCTION ONLY
- TRAFFIC FLOW DIRECTION
- DRUM WITH STEADY BURN MONODIRECTIONAL LIGHT
- FLEXIBLE DELINEATOR
- IMPACT ATTENUATOR
- PERIMETER EROSION BARRIER



REVISIONS	
NAME	DATE

COOMBE-BLOXDORF P.C.
 Engineers / Land Surveyors
 Springfield, Illinois
 Design Firm License No. 184-002708

ILLINOIS DEPARTMENT OF TRANSPORTATION
TRAFFIC CONTROL PLAN
STAGE 1
 SCALE: _____
 DATE AUG. 2008
 DRAWN BY CFC
 CHECKED BY MCB/GLS

10/17/2008 #FILE:BBREV#