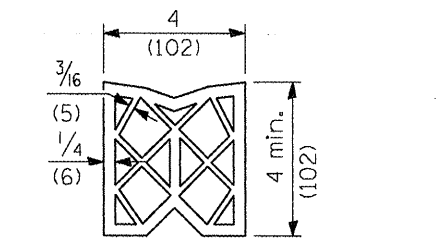
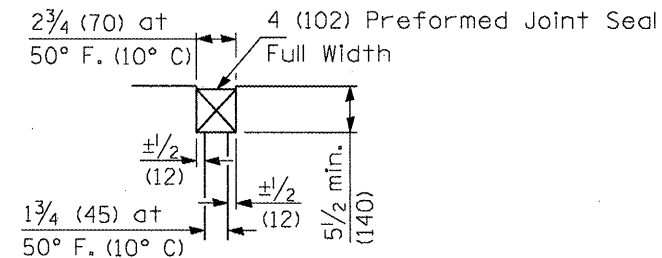


SECTION C-C

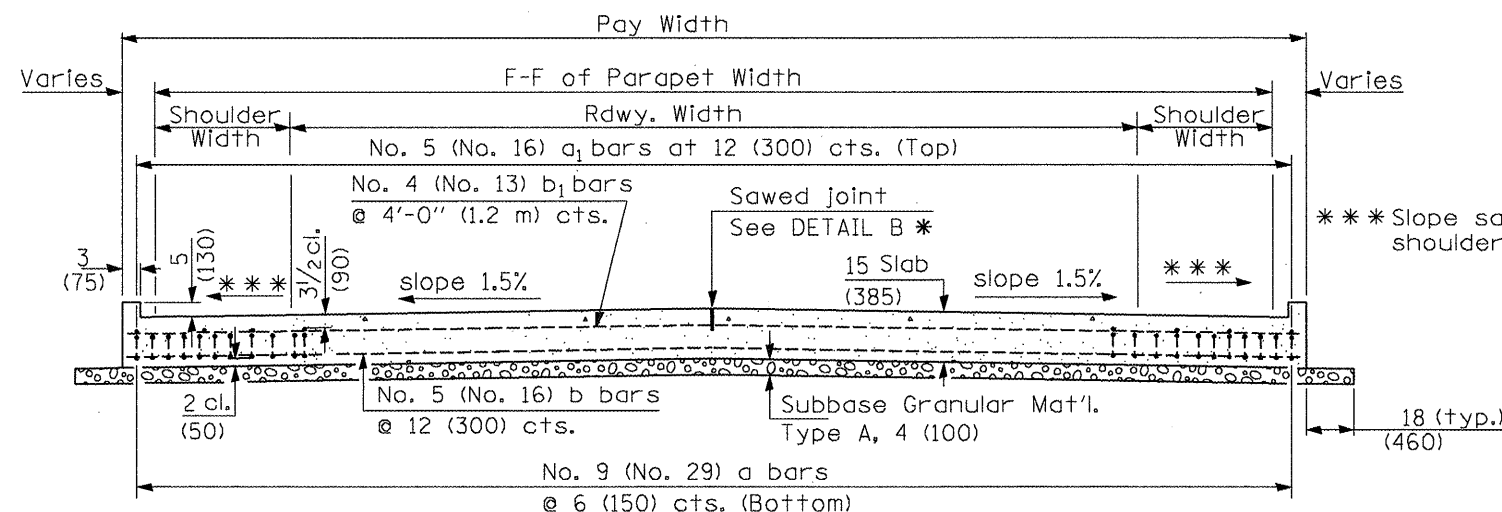
1 Stagger No. 9 (No. 29) a bars as shown on plan - full width



PREFORMED JOINT SEAL

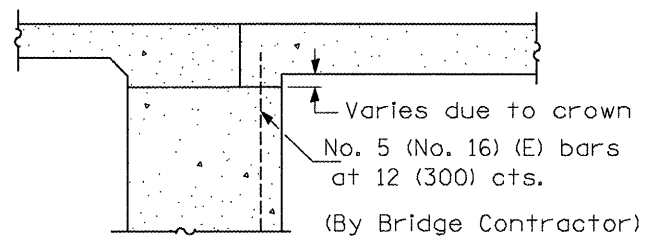


DETAIL A



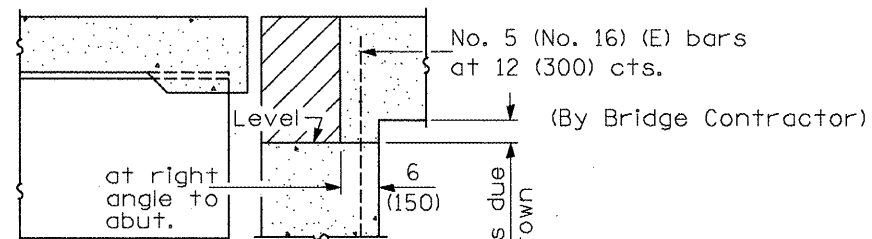
SECTION D-D

(See Plan for Dimensions not shown)



SECTION E-E

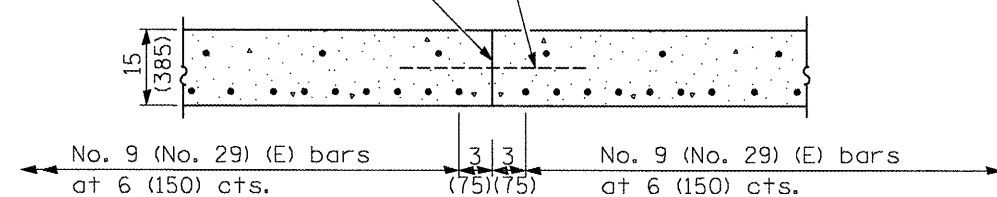
(Integral Abutments)



SECTION E-E

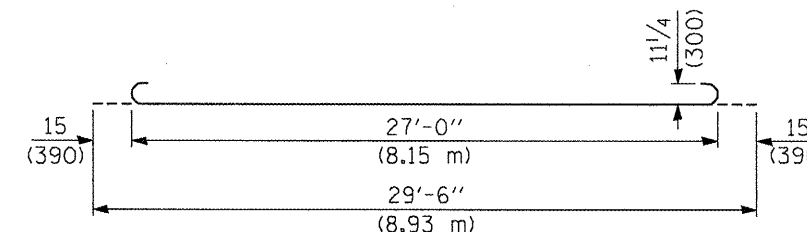
(Jointed Abutments)

Longitudinal Construction Joint in accordance with details shown on Standard 420001.

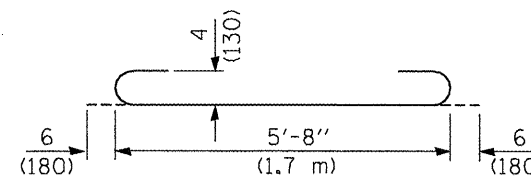


OPTIONAL LONGITUDINAL CONSTRUCTION JOINT

As approved by the Engineer, the Contractor may elect to reduce the widths of pour by use of the Optional Longitudinal Construction Joint shown. Joints shall be located at the edge of a traffic lane.



BAR a



BAR a₂

DESIGN STRESSES

f_y = 60,000 p.s.i. (400 MPa)
 f'_c = 3,500 p.s.i. (24 MPa)
 n = 8.5

FILE NAME =	USER NAME = brucebn	DESIGNED -	REVISED -	STATE OF ILLINOIS DEPARTMENT OF TRANSPORTATION	BRIDGE APPROACH PAVEMENT DETAIL		F.A.U. RTE. 64	SECTION (10)B/R	COUNTY PEORIA	TOTAL SHEETS 186	SHEET NO. 132	
C:\Documents and Settings\hudeisonme\Local Settings\Temporary Internet Files\OLK97\pDRAWN detail.dgn	PLOT SCALE = 48.0000' / IN.	CHECKED -	REVISED -		NOT TO SCALE	SHEET NO. 3 OF 4 SHEETS	CONTRACT NO. 88803		FED. ROAD DIST. NO. [ILLINOIS] FED. AID PROJECT			
	PLOT DATE = 10/17/2008	DATE -	REVISED -									