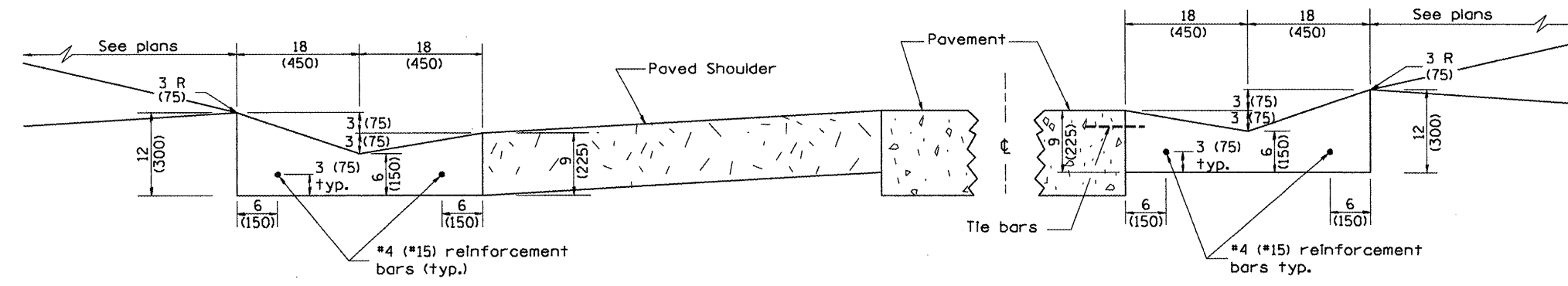


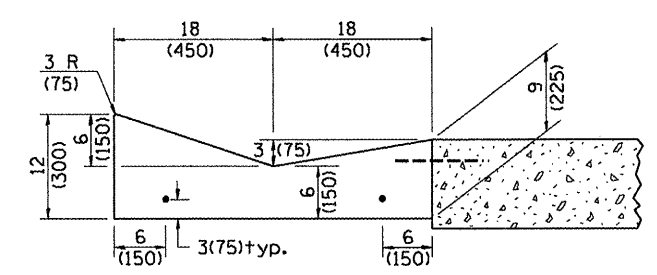
F.A.P. RTE.	SECTION	COUNTY	TOTAL SHEETS	SHEET NO.
64	*	PEORIA	186	173
STA.		TO STA.		
FED. ROAD DIST. NO.		ILLINOIS FED. AID PROJECT		



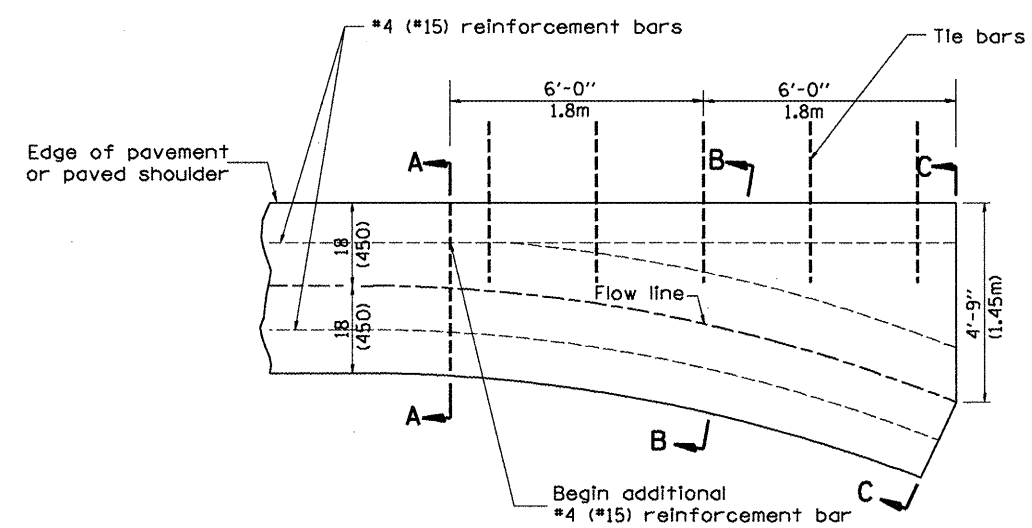
**SHOULDER EDGE GUTTER**

**TYPE A GUTTER (MODIFIED)**

**PAVEMENT EDGE GUTTER**



**SECTION A-A**

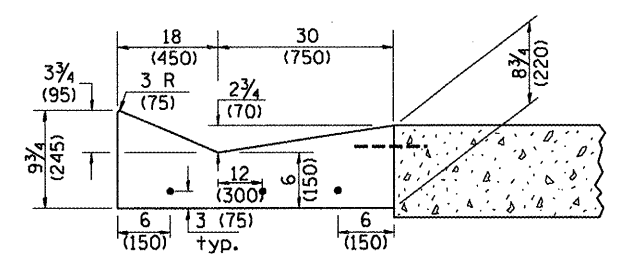


**PLAN**

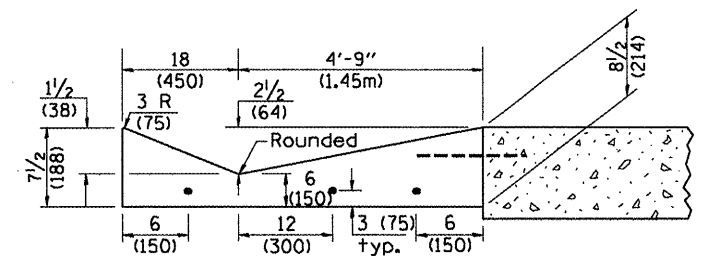
**QUANTITY**  
Section C-C to A-A: 1.2 cu. yd.  
(0.92 m<sup>3</sup>) concrete.

**GENERAL NOTES:**

1. TYPE A GUTTER (MODIFIED) shall conform to the applicable portions of Section 606.
2. Tie bars shall be No. 6 (No. 20) at 24" (600mm) centers unless otherwise shown.
3. Gutter, gutter inlets, gutter outlets, and gutter entrances shall be tied to rigid pavement in accordance with details shown on Standard 420001.
4. Joints shall be constructed in accordance with Article 606.06.
5. Welded wire fabric shall conform to Article 1006.10(c)(1), and shall not be less than 58 lbs/100 sq.ft. (2.83 kg/m<sup>2</sup>).



**SECTION B-B**



**SECTION C-C**

**INLET**

All dimensions are in inches (millimeters) unless otherwise noted.

ILLINOIS DEPARTMENT OF TRANSPORTATION	
DISTRICT CADD STANDARD	
TYPE A GUTTER, (MODIFIED)	
(INLET, OUTLET & ENTRANCE)	
CADD STANDARD 606101-D4	SHEET 1 OF 3
SCALE: NOT DRAWN TO SCALE	DRAWN BY CADD
	CHECKED BY

DATE	REVISIONS	BY
1-1-97	RENUM. A-1.02, NEW REVISION BOX, ELIMINATED EXPANSION ANCHOR TIES.	T.P.
2-28-02	ENTRANCE TYPICALS REVISED	M.A.
10-16-06	REVISED TO 2007 SPEC.	M.A.
1-10-07	REVISED QUANTITY	M.A.

QUANTITIES	
CALC. BY:	DATE:
CHECKED BY:	DATE:
QUANTITY CALCULATIONS ARE ON FILE AT THE DISTRICT 4 OFFICE; BUREAU OF PROJECT IMPLEMENTATION; DOCUMENTATION SECTION	