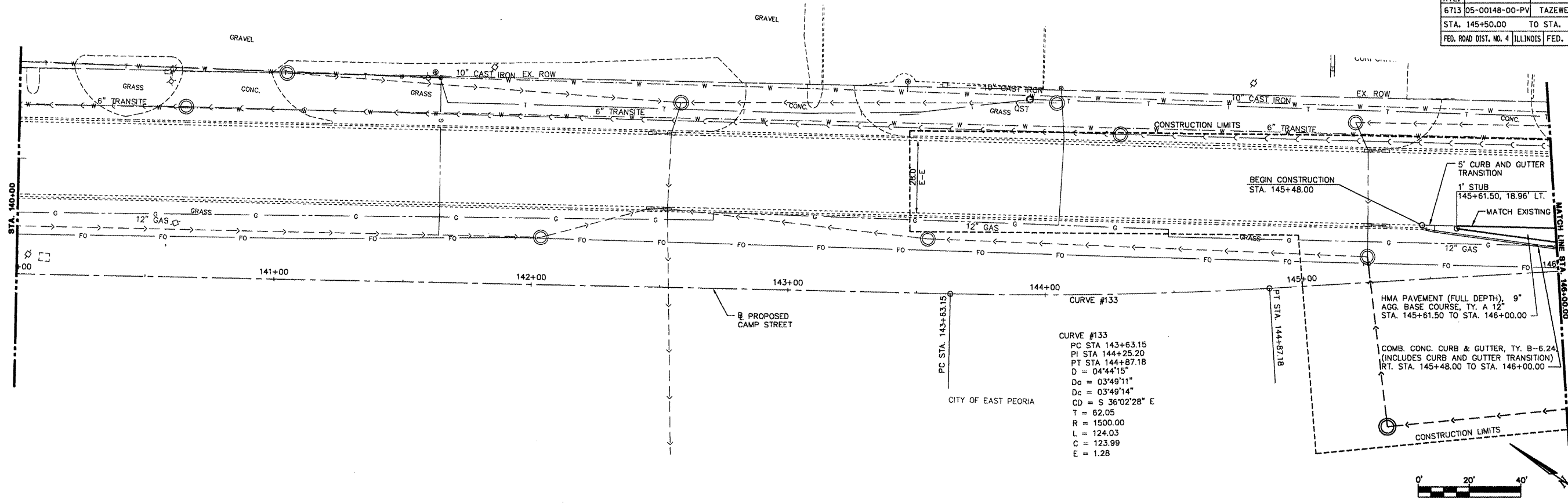
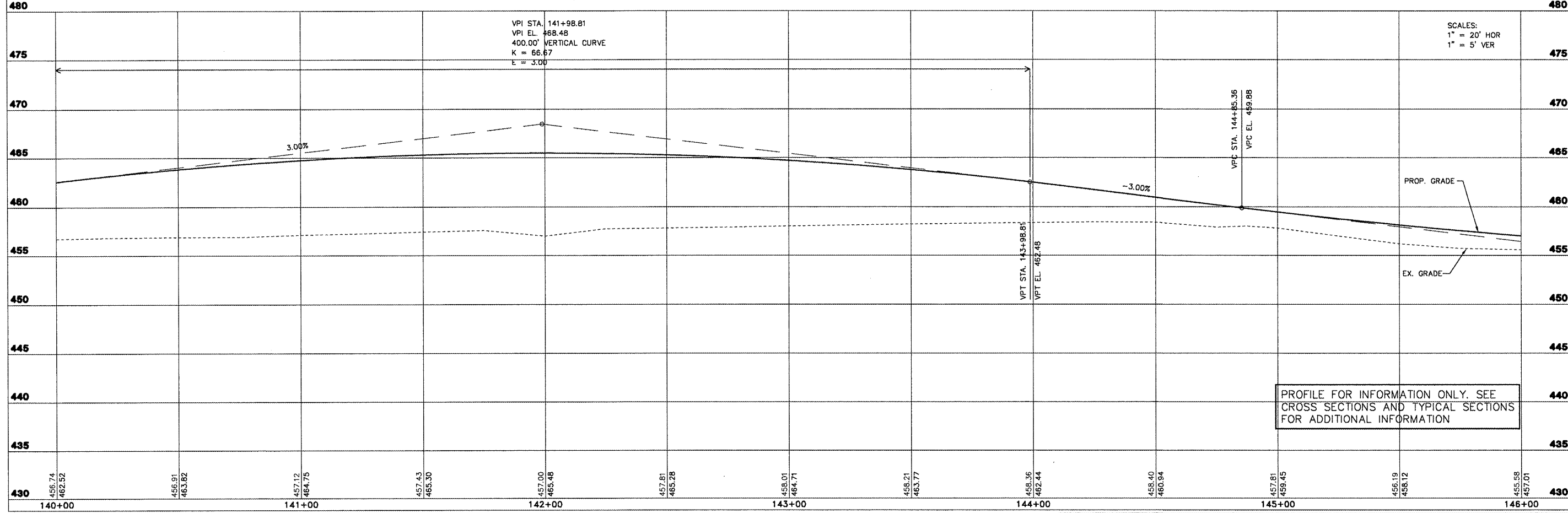
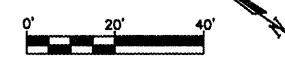


F.A.I. RTE.	SECTION	COUNTY	TOTAL SHEETS	SHEET NO.
6713	05-00148-00-PV	TAZEWELL	74	15
STA. 145+50.00		TO STA. 156+60.00		
FED. ROAD DIST. NO. 4 ILLINOIS FED. AID PROJECT				



**CURVE #133**  
 PC STA 143+63.15  
 PI STA 144+25.20  
 PT STA 144+87.18  
 D = 0444'15"  
 Dc = 03'49'11"  
 Dc = 03'49'14"  
 CD = S 36°02'28" E  
 T = 62.05  
 R = 1500.00  
 L = 124.03  
 C = 123.99  
 E = 1.26

HMA PAVEMENT (FULL DEPTH), 9"  
 AGG. BASE COURSE, TY. A 12"  
 STA. 145+61.50 TO STA. 146+00.00  
 COMB. CONC. CURB & GUTTER, TY. B-6.24  
 (INCLUDES CURB AND GUTTER TRANSITION)  
 RT. STA. 145+48.00 TO STA. 146+00.00



PROFILE FOR INFORMATION ONLY. SEE  
 CROSS SECTIONS AND TYPICAL SECTIONS  
 FOR ADDITIONAL INFORMATION

**CAMP STREET - PLAN AND PROFILE - STA. 140+00 TO STA. 146+00**

L:\830218\VP\VP01001.dwg