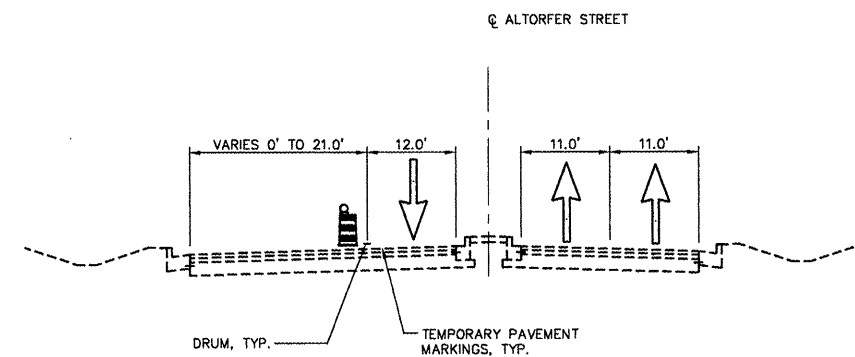
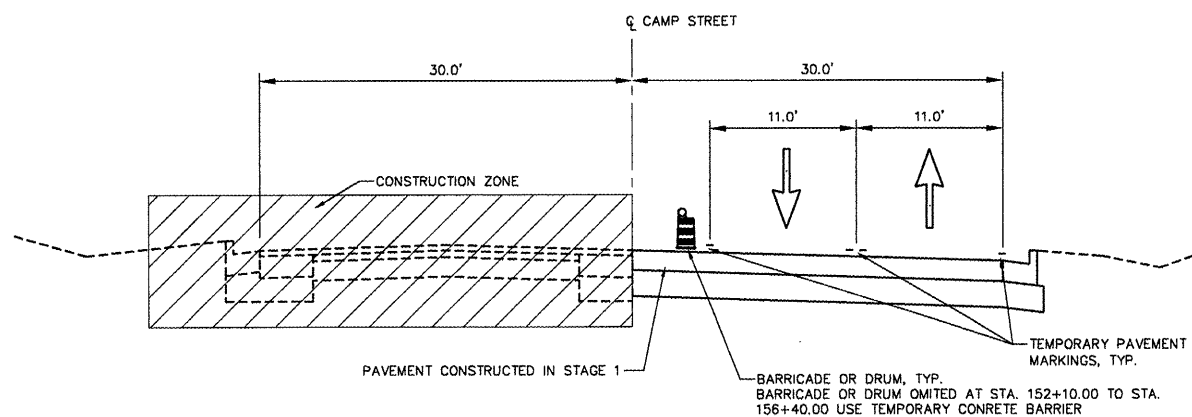


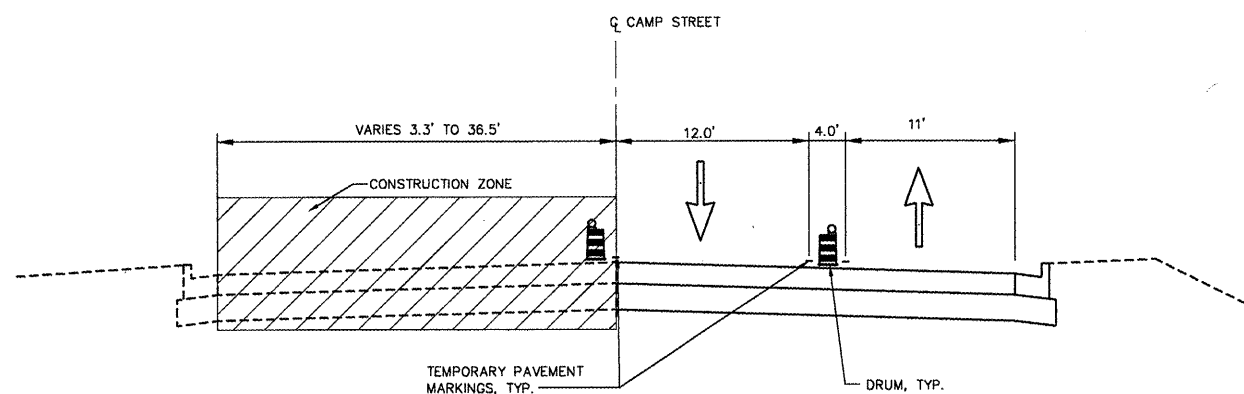
F.A.U. RTE.	SECTION	COUNTY	TOTAL SHEETS	SHEET NO.
6713	05-00148-00-PV	TAZEWELL	74	22
STA. 145+50.00		TO STA. 156+60.00		
FED. ROAD DIST. NO. 4		ILLINOIS	FED. AID PROJECT	



TYPICAL SECTION - ALTORFER LN.
SCALE: N.T.S.



TYPICAL SECTION - CAMP ST.
SCALE: N.T.S.
STA. 145+50.00 TO STA. 155+02.98



TYPICAL SECTION - CAMP ST.
SCALE: N.T.S.
STA. 155+02.98 TO STA. 156+82.00

STAGE 2

GENERAL NOTES:

ALL TRAFFIC CONTROL DEVICES INCLUDING SIGNS, CHANNELIZING DEVICES, TEMPORARY PAVEMENT MARKINGS AND LIGHTING DEVICES ALONG WITH THE PLAN TO MAINTAIN TRAFFIC DURING CONSTRUCTION SHALL CONFORM TO THE APPLICABLE PORTIONS OF THE "MANUAL ON UNIFORM TRAFFIC CONTROL DEVICES FOR STREETS AND HIGHWAYS", "STANDARD SPECIFICATIONS FOR ROAD AND BRIDGE CONSTRUCTION", "STANDARD SPECIFICATIONS FOR TRAFFIC CONTROL DEVICES", "HIGHWAY STANDARDS" AND OTHER APPLICABLE IDOT MANUALS AND POLICIES.

NIGHT TIME LANE CLOSURES ARE NOT ALLOWED.

DAY TIME LANE CLOSURES ARE NOT ALLOWED.

ACCESS TO ENTRANCES AND LOCAL ROADS WITHIN THE PROJECT AREA WILL BE MAINTAINED AT ALL TIMES, UNLESS OTHERWISE SPECIFIED IN TRAFFIC NOTES.

TEMPORARY BITUMINOUS PAVEMENT TO CONSIST OF AGGREGATE BASE COURSE, TYPE B 4" AND BITUMINOUS BASE COURSE 10".

TEMPORARY BITUMINOUS BUILD UPS TO BE BITUMINOUS CONCRETE BINDER COURSE, HOT-MIX ASPHALT, IL 19.0, N70.
TEMPORARY BITUMINOUS BUILD UPS SHALL BE CONSTRUCTED WITH SLOPES OF 1:20 MAXIMUM.

DRAINAGE TO EXISTING AND PROPOSED DRAINAGE STRUCTURES TO BE MAINTAINED AT ALL TIMES.

ALL TEMPORARY PAVEMENT MARKINGS FOR STAGES 1, 2, SUBSTAGE 2A AND SUBSTAGE 2B, INCLUDING EDGE LINES, CENTER LINES, LANE LINES, TAPERS, MEDIAN DIAGONALS, STOP BARS, LETTERS & SYMBOLS, AND ANY OTHER TEMPORARY MARKINGS AS REQUIRED BY THE ENGINEER, AND THEIR REMOVAL SHALL BE INCLUDED IN THE COST OF TRAFFIC CONTROL AND PROTECTION, STANDARD 701.331. THIS WORK SHALL BE PERFORMED ACCORDING TO SECTIONS 701 AND 703 OF THE STANDARD SPECIFICATIONS AND AS DIRECTED BY THE ENGINEER.

ALL TRAFFIC SIGNAL HEAD ADJUSTMENTS SHALL BE INCLUDED IN THE COST OF TRAFFIC CONTROL AND PROTECTION.

TRAFFIC NOTES:

SHIFT TRAFFIC AS SHOWN ON THE PLANS UTILIZING TEMPORARY PAVEMENT MARKINGS AND TRAFFIC CONTROL DEVICES SHOWN ON THE STAGING PLANS AND APPLICABLE TRAFFIC CONTROL STANDARDS.

MAINTAIN ONE (1) LANE OF TRAFFIC IN EACH DIRECTION WHILE MAINTAINING ACCESS TO ALL ENTRANCES AND EXITS AS SHOWN ON THE STAGING PLANS.

UTILIZE TRAFFIC CONTROL STANDARDS AS SHOWN ON THE STAGING PLANS.

CONSTRUCTION SEQUENCE OF STAGING NOTES:

ADJUST SIGNAL HEADS TO MATCH NEW LANE GEOMETRICS.

INSTALL PERMANENT AND TEMPORARY DRAINAGE SYSTEMS AS SHOWN ON THE STAGING PLANS.

PLACE TEMPORARY PAVEMENT MARKINGS AS SHOWN ON THE STAGING PLANS AND REMOVE ANY CONFLICTING EXISTING PAVEMENT MARKINGS.

REMOVE EXISTING CURB AND GUTTER AND PAVEMENT.

CONSTRUCT THE PERMANENT PAVEMENT, CURB AND GUTTER, AND ENTRANCES AS SHOWN ON THE STAGING PLANS.

CONSTRUCT DITCHING AND STORM SEWER AS SHOWN ON THE STAGING PLANS.

DO NOT PLACE THE HOT-MIX ASPHALT SURFACE COURSE BETWEEN STA. 155+01.14 TO STA. 156+52.40 UNTIL AFTER SUBSTAGE 2A HAS BEEN COMPLETED.

REVISIONS	
NAME	DATE

ILLINOIS DEPARTMENT OF TRANSPORTATION
CAMP STREET CONNECTOR
 MAINTENANCE OF TRAFFIC
 TYPICAL SECTIONS
 STAGE 2
 SCALE: VERT. _____
 HORIZ. _____
 DATE 12/22/2008
 DRAWN BY JLT
 CHECKED BY CSA

L:\200218\DWG\MITS\CP02.dwg