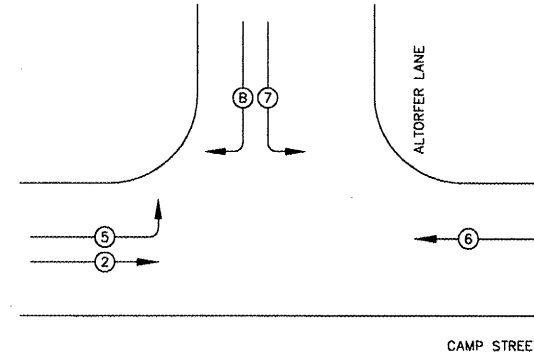


F.A.J.J. RTE.	SECTION	COUNTY	TOTAL SHEETS	SHEET NO.
6713	05-00148-00-PV	TAZEWELL	74	40
STA. 145+50.00		TO STA. 156+60.00		
FED. ROAD DIST. NO. 4 ILLINOIS FED. AID PROJECT				

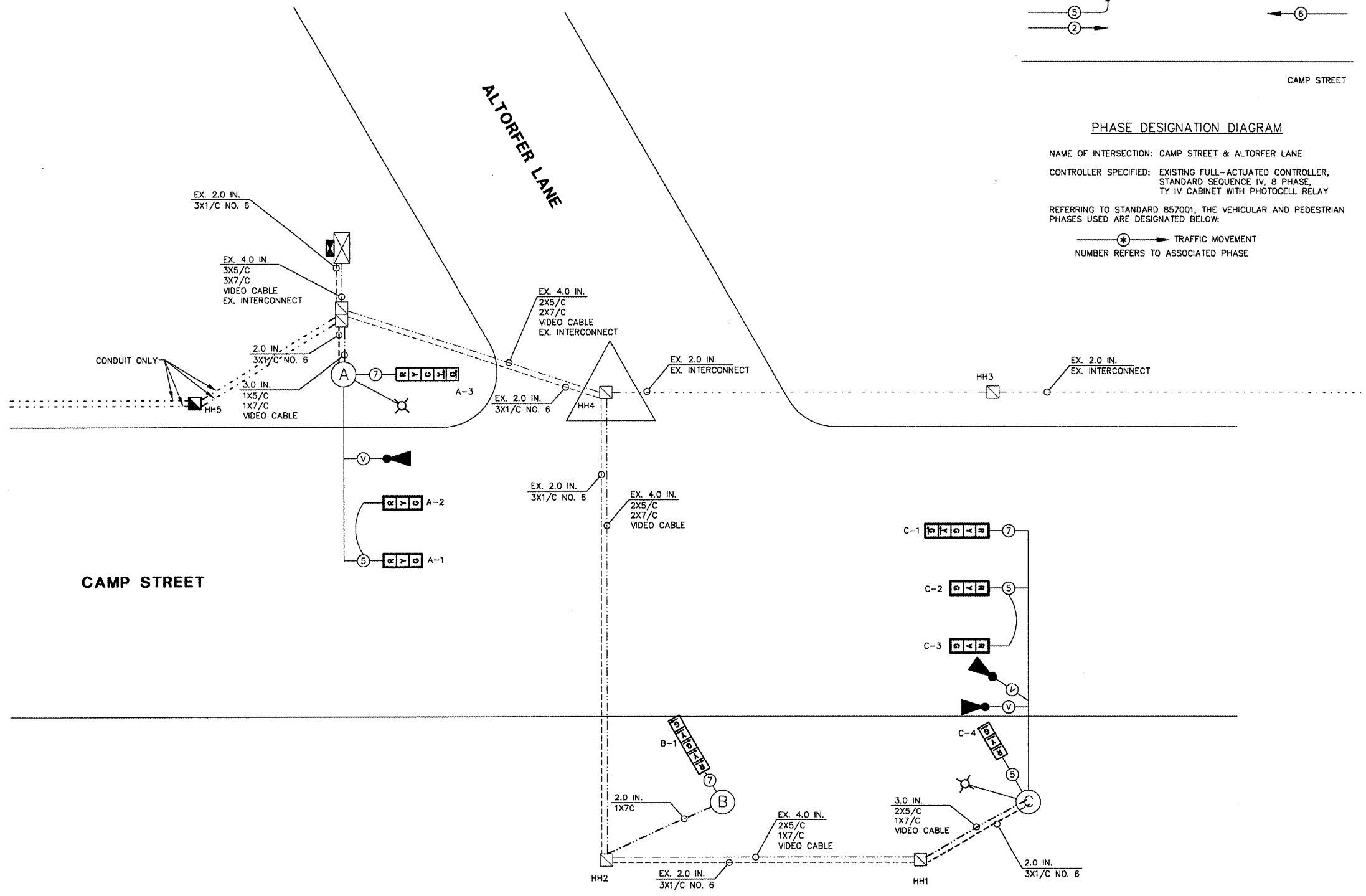


PHASE DESIGNATION DIAGRAM

NAME OF INTERSECTION: CAMP STREET & ALTORFER LANE
 CONTROLLER SPECIFIED: EXISTING FULL-ACTUATED CONTROLLER, STANDARD SEQUENCE IV, 8 PHASE, TY IV CABINET WITH PHOTOCELL RELAY
 REFERRING TO STANDARD 857001, THE VEHICULAR AND PEDESTRIAN PHASES USED ARE DESIGNATED BELOW:
 (Symbol with arrow and number) TRAFFIC MOVEMENT
 NUMBER REFERS TO ASSOCIATED PHASE

TRAFFIC SIGNAL LEGEND

EXISTING	NEW	
		CONCRETE HANDHOLE
		CONCRETE DOUBLE HANDHOLE
		SIGNAL CONTROLLER
		LIGHTING CONTROLLER
		VIDEO DETECTION CAMERA
		LUMINAIRE
		SIGNAL HEAD WITH BACKPLATE 1 FACE, 3 SECTION
		SIGNAL HEAD - 1 FACE, 3 SECTION
		CONDUIT - TRAFFIC SIGNAL CONDUCTORS (PUSHED OR TRENCHED)
		CONDUIT - POWER SUPPLY LUMINAIRES (PUSHED OR TRENCHED)
		CONDUIT - INTERCONNECT CABLE (PUSHED OR TRENCHED)
		3 CONDUCTOR No. 14 CABLE
		5 CONDUCTOR No. 14 CABLE
		7 CONDUCTOR No. 14 CABLE
		VIDEO DETECTION CABLE
		1 WIRE, 5 CONDUCTOR, No. 14 CABLE
		1 WIRE, 7 CONDUCTOR, No. 14 CABLE
		3 WIRE, 1 CONDUCTOR No. 6 CABLE
		2.0 IN. DENOTES 1 - 5 CONDUCTOR CABLE ASSEMBLIES IN 2" CONDUIT



PLAN VIEW
SCALE: N.T.S.

REVISIONS	
NAME	DATE

ILLINOIS DEPARTMENT OF TRANSPORTATION
CAMP STREET CONNECTOR
 TRAFFIC SIGNAL
 CABLE WIRING DIAGRAM
 SCALE: VERT. DRAWN BY JLT
 HORIZ. CHECKED BY CSA
 DATE 12/22/2008

L:\PROJECTS\0505\SIGNAL-CABLE-DIA.dwg