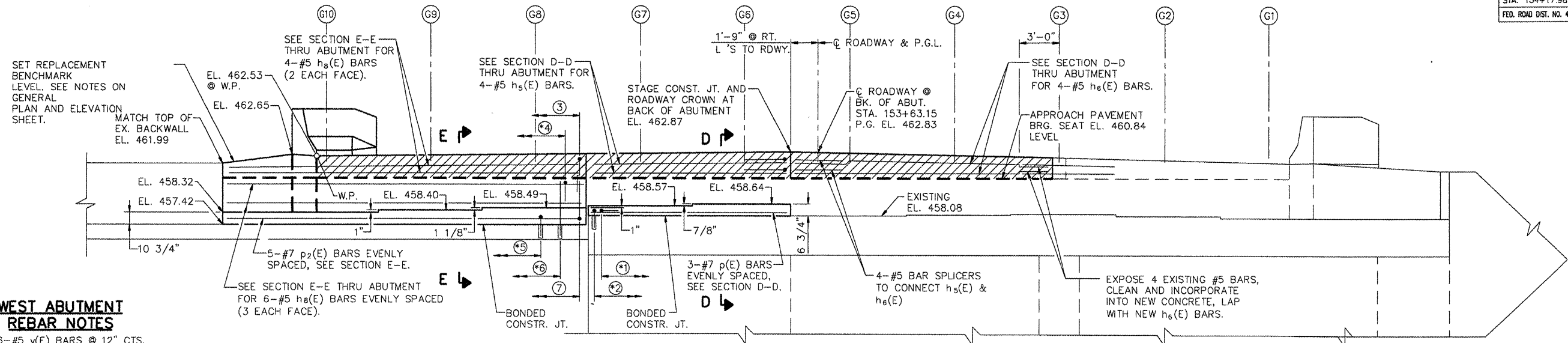


F.A.U. RTE.	SECTION	COUNTY	TOTAL SHEETS	SHEET NO.
6713	05-00148-00-PV	TAZEWELL	74	54
STA. 154+17.98		STRUCTURE NO. 090-0027		
FED. ROAD DIST. NO. 4 ILLINOIS		FED. AID PROJECT		

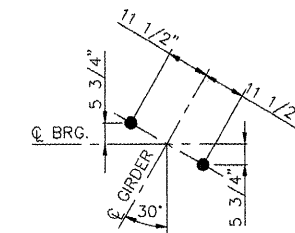


WEST ABUTMENT REBAR NOTES

- ① 16-#5 v(E) BARS @ 12" CTS.
- ② 16-#5 v4(E) BARS @ 12" CTS.
- ③ 28-#5 v9(E) BARS @ 12" CTS.
- ④ 28-#5 v8(E) BARS @ 12" CTS.
- ⑤ 28-#5 v8(E) BARS @ 12" CTS.
- ⑥ 28-#5 v7(E) BARS @ 12" CTS.
- ⑦ 28-#5 v6(E) BARS @ 12" CTS.

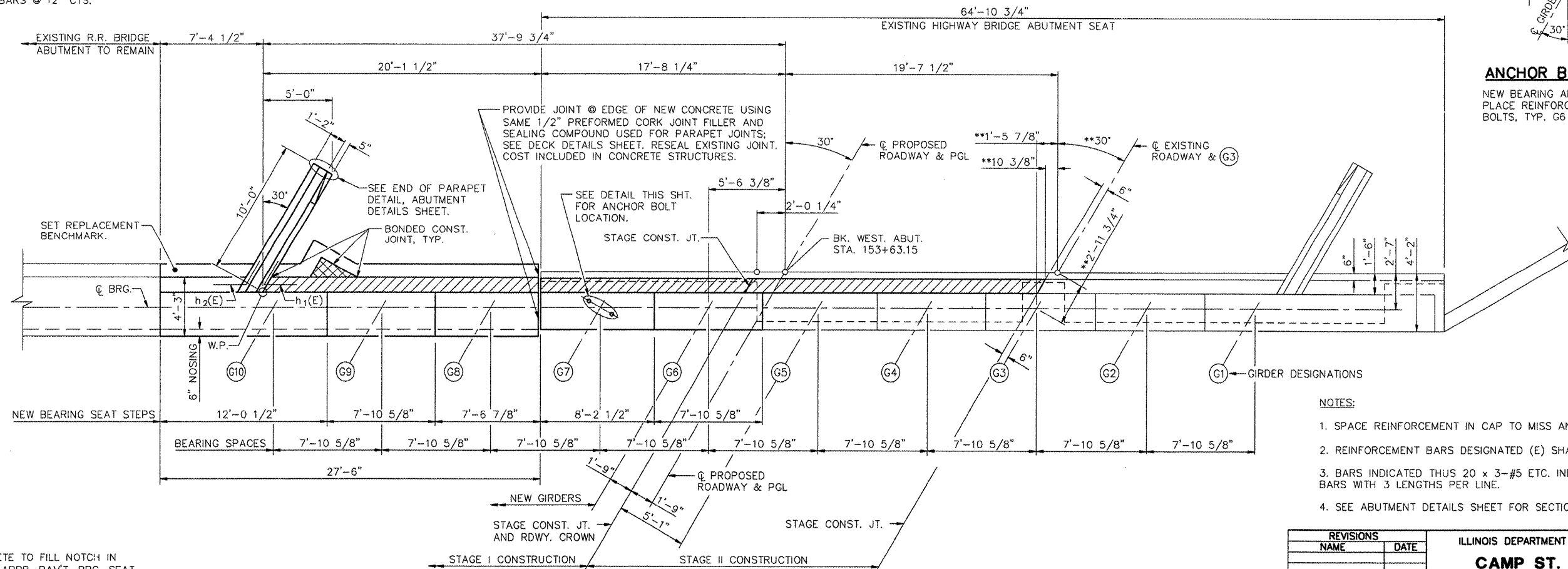
ELEVATION LOOKING WEST

* DRILL AND EPOXY GROUT v(E), v4(E), v7(E), AND v8(E) BARS INTO EXISTING CONCRETE IN ACCORDANCE WITH SECTION 584 OF THE STANDARD SPECIFICATIONS, 12" MIN. EMBEDMENT, TYP.



ANCHOR BOLT DETAIL

NEW BEARING ANCHOR BOLT LOCATIONS. PLACE REINFORCEMENT TO MISS ANCHOR BOLTS, TYP. G6 THRU G10.



NOTES:

1. SPACE REINFORCEMENT IN CAP TO MISS ANCHOR BOLTS.
2. REINFORCEMENT BARS DESIGNATED (E) SHALL BE EPOXY COATED.
3. BARS INDICATED THUS 20 x 3-#5 ETC. INDICATES 20 LINES OF BARS WITH 3 LENGTHS PER LINE.
4. SEE ABUTMENT DETAILS SHEET FOR SECTIONS AND BAR BENDS.

- PLACE CONCRETE TO FILL NOTCH IN BACKWALL TO APPR. PAV'T. BRG. SEAT ELEV. 460.84.
- CONCRETE PLACED AFTER SUPERSTRUCTURE FORMS HAVE BEEN REMOVED; CONCRETE QUANTITY INCLUDED WITH SUPERSTRUCTURE. MATCH EXISTING CROWN.

WEST ABUTMENT PLAN

** DIMENSIONS TYPICAL G3 THRU G10.

REVISIONS	
NAME	DATE

ILLINOIS DEPARTMENT OF TRANSPORTATION
CAMP ST. OVER FARM CREEK DIVERSION CHANNEL WEST ABUTMENT DETAILS
 SCALE: N.T.S. DRAWN BY: MGM
 DATE: 12/22/2008 CHECKED BY: PUL

L:\830216\BRIDGE\PLANS\11-090-0027.dwg