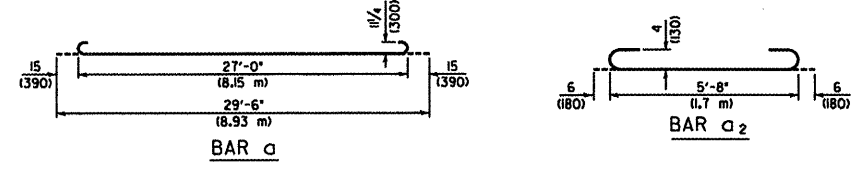
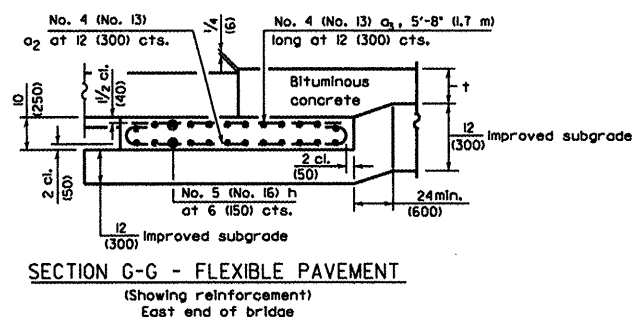
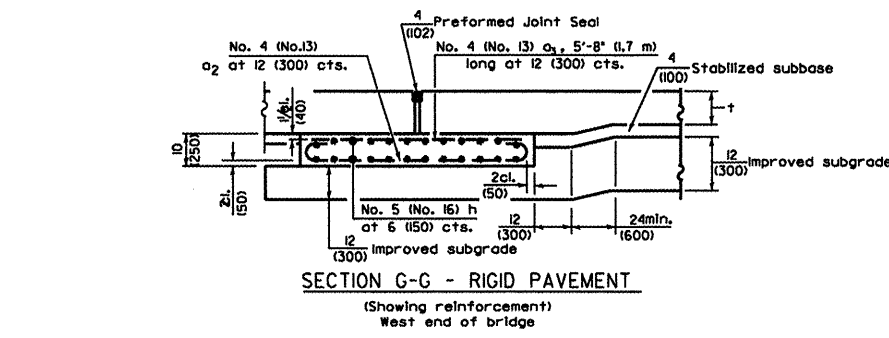
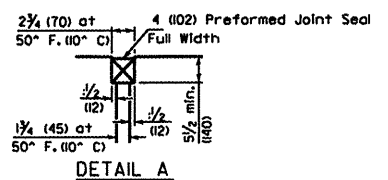
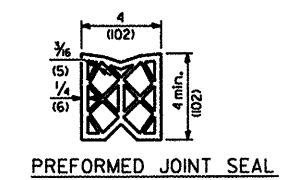
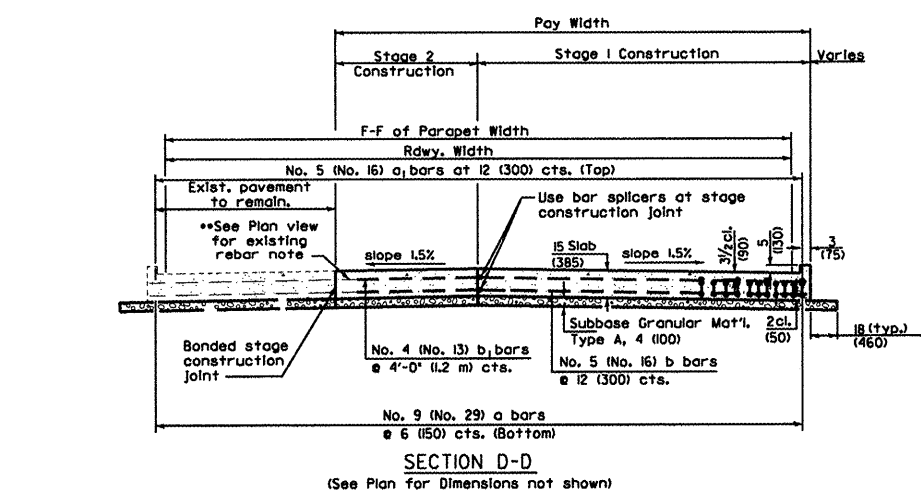
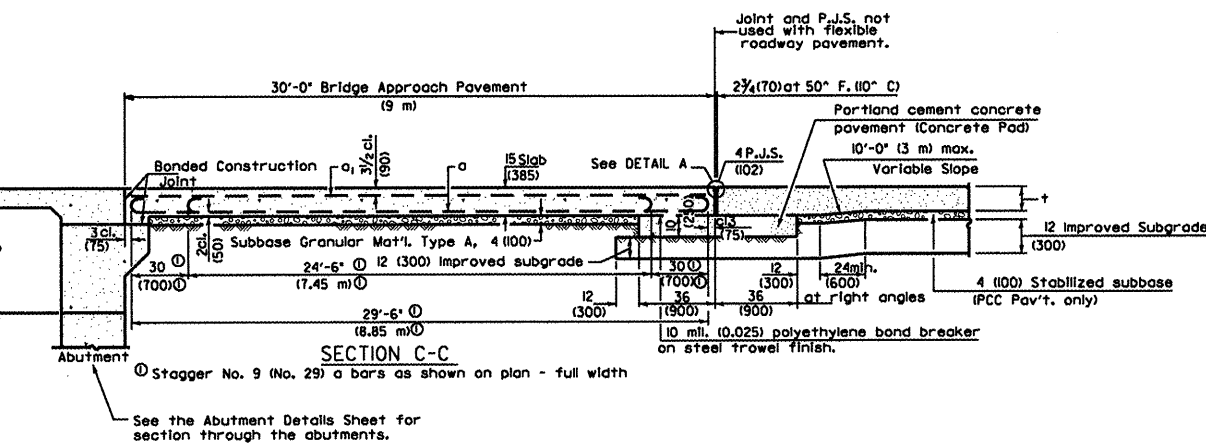
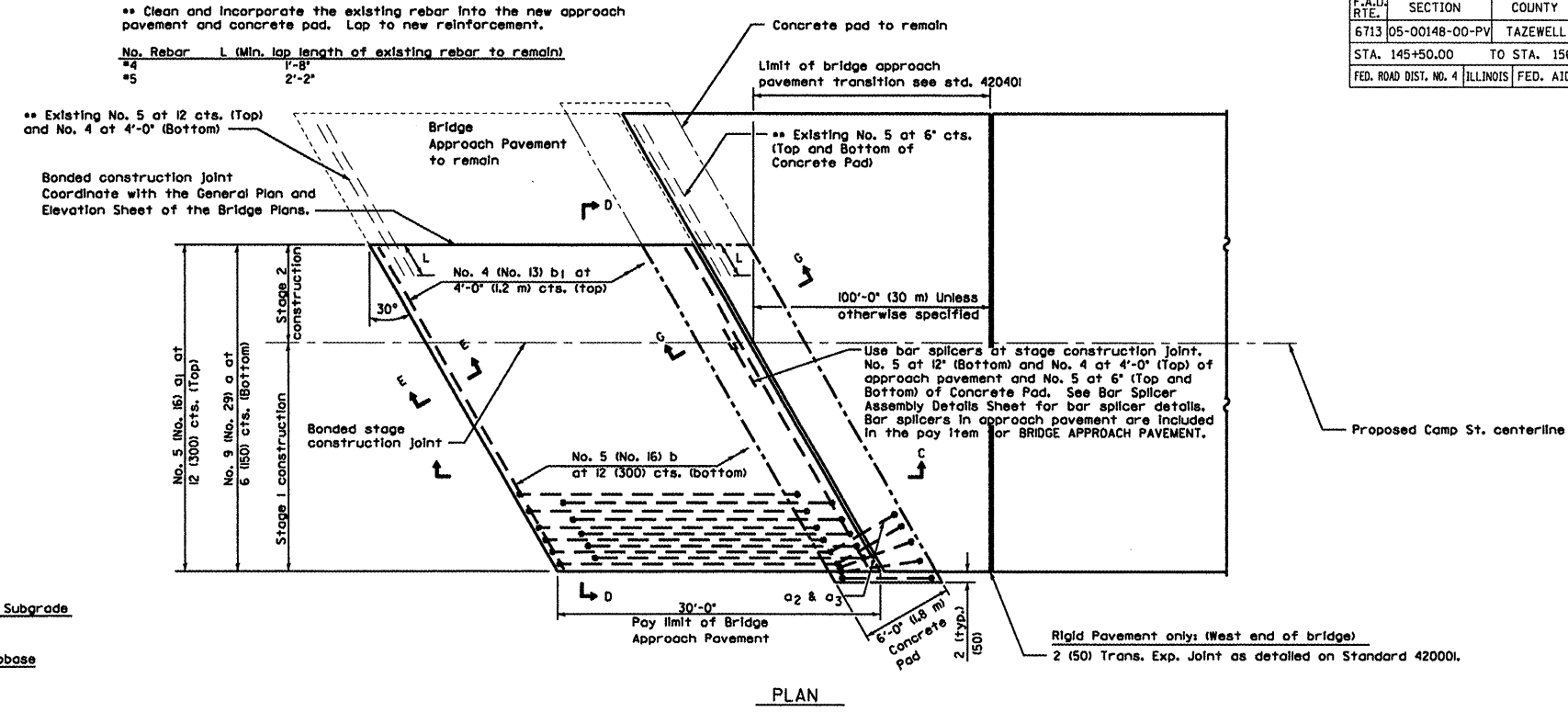
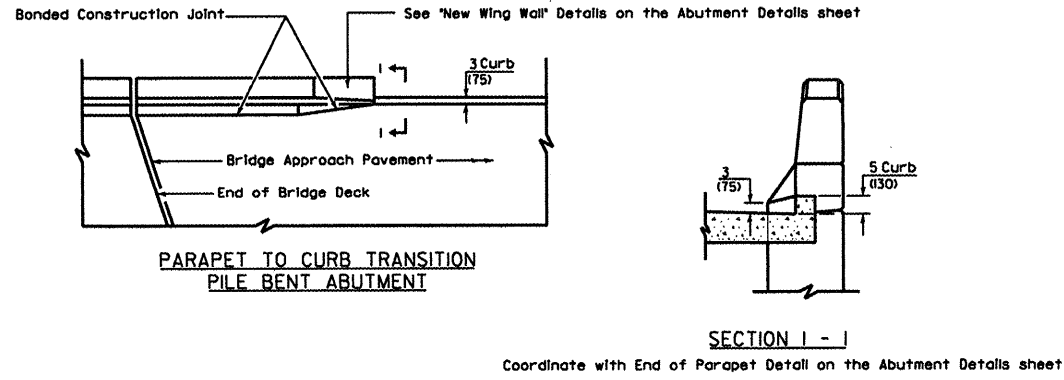


F.A.U. RTE.	SECTION	COUNTY	TOTAL SHEETS	SHEET NO.
6713	05-00148-00-PV	TAZEWELL	74	59
STA. 145+50.00		TO STA. 156+60.00		
FED. ROAD DIST. NO. 4		ILLINOIS FED. AID PROJECT		



BRIDGE APPROACH PAVEMENT DETAIL
SCALE: N.T.S.

DESIGN STRESSES
 $f_y = 60,000$ p.s.i., (400 MPa)
 $f'_c = 3,500$ p.s.i., (24 MPa)
 $n = 8.5$

GENERAL NOTES

THICKNESS- t =Thickness of Pavement.

See Standard 42100 for reinforcement details not shown.

See Standard 420001 for joint details not shown.

All dimensions are in inches (millimeters) unless otherwise shown.

The concrete pad and all reinforcement are included in the pay item for BRIDGE APPROACH PAVEMENT.

REVISIONS	
NAME	DATE

ILLINOIS DEPARTMENT OF TRANSPORTATION
CAMP STREET CONNECTOR
BRIDGE APPROACH PAVEMENT
DETAIL

SCALE: VERT. _____
 HORIZ. _____
 DATE 12/22/2008

DRAWN BY JLT
 CHECKED BY CSA

U:\830218\DWG\M02.dwg