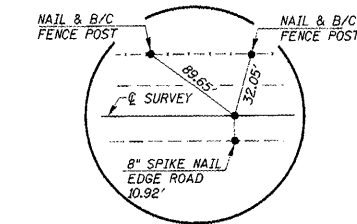
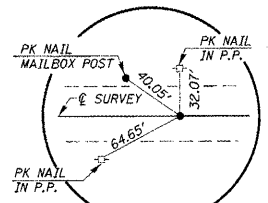


SE. 1/4 SEC. 36, T. 14 N., R. 8 E., 4TH P.M.
MILO ROAD DISTRICT, BUREAU COUNTY
STEVEN GIBBS

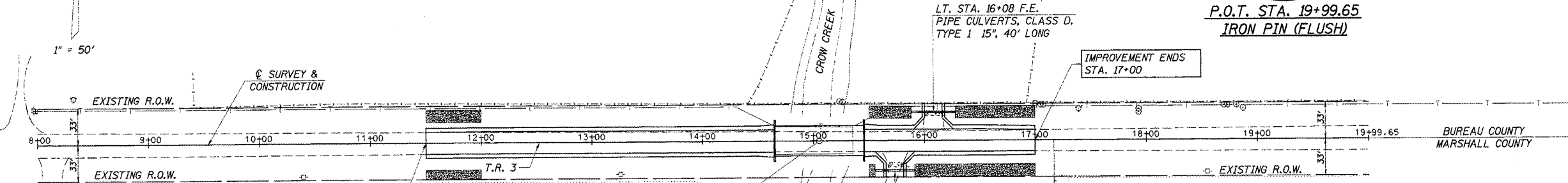
ROUTE	SECTION	COUNTY	TOTAL SHEETS	SHEET NO.
T.R. 3		MARSHALL/BUREAU	14	3
STA. 8+00		TO STA. 20+00		
ILLINOIS		SARATOGA/MILO		

CONTRACT NO. 89398
05-1016-00-BR - MARSHALL
08-1614-00-BR - BUREAU



ENTRANCES TO BE BUILT
RT. STA. 15+73, F.E. -15.0%, 20' ROADBED
LT. STA. 16+08, F.E. -8.2%, 20' ROADBED
QUANTITIES INCLUDED IN THOSE LISTED

PIPES TO BE REMOVED
RT. STA. 15+73, 10" CMP, 22' LONG
LT. STA. 16+08, 12" CMP, 22' LONG
QUANTITIES INCLUDED IN "EARTH EXCAVATION".



P.O.T. STA. 8+00
IRON PIN (FLUSH)

P.O.T. STA. 19+99.65
IRON PIN (FLUSH)

IMPROVEMENT BEGINS
STA. 11+50

STA. 15+05 - SPECIAL BRIDGE DESIGN
PRECAST PRESTRESSED CONCRETE
DECK BEAM BRIDGE, SINGLE SPAN @ 80'
27'-0" ROADWAY, SKEW = 0°

RT. STA. 15+73 F.E.
PIPE CULVERTS, CLASS D,
TYPE 1 15", 36" LONG

LT. STA. 16+08 F.E.
PIPE CULVERTS, CLASS D,
TYPE 1 15", 40" LONG

EXISTING STRUCTURE NO. 062-3008
3-SPAN PRECAST CONCRETE BRIDGE SLAB BRIDGE ON
CLOSED TIMBER ABUTMENTS & TIMBER PILE BENT PIERS
BK.-to-BK. = 72'-0"
O.-to-O. = 26'-0"
0° SKEW
REMOVAL OF EXISTING STRUCTURES = 1 EACH

CHANNEL EXCAVATION

THE CHANNEL SHALL BE EXCAVATED AS SHOWN WITHIN THE
LIMITS OF THE PROPOSED STRUCTURE THEN TAPER TO THE
EXISTING CHANNEL AT THE R.O.W. LINES. SUITABLE
EXCAVATED MATERIAL TO BE USED IN THE EMBANKMENT AS
DIRECTED BY THE ENGINEER.

LOIS M. WILSON AND NC ILLINOIS TRUST COMPANY

STEVEN GIBBS

UTILITIES
BURIED TELEPHONE
VERIZON NORTH 309-663-3422
OVERHEAD ELECTRIC
AMERENCILCO 309-693-4762

CHANNEL EXCAVATION = 100 CU. YD.

NE. 1/4 SEC. 1, T. 13 N., R. 8 E., 4TH P.M.
SARATOGA ROAD DISTRICT, MARSHALL COUNTY

DATE	03/28/00
BY	SM
CHECKED	SM
SCALE	AS SHOWN
PROJECT	MILO ROAD
NO.	000000

