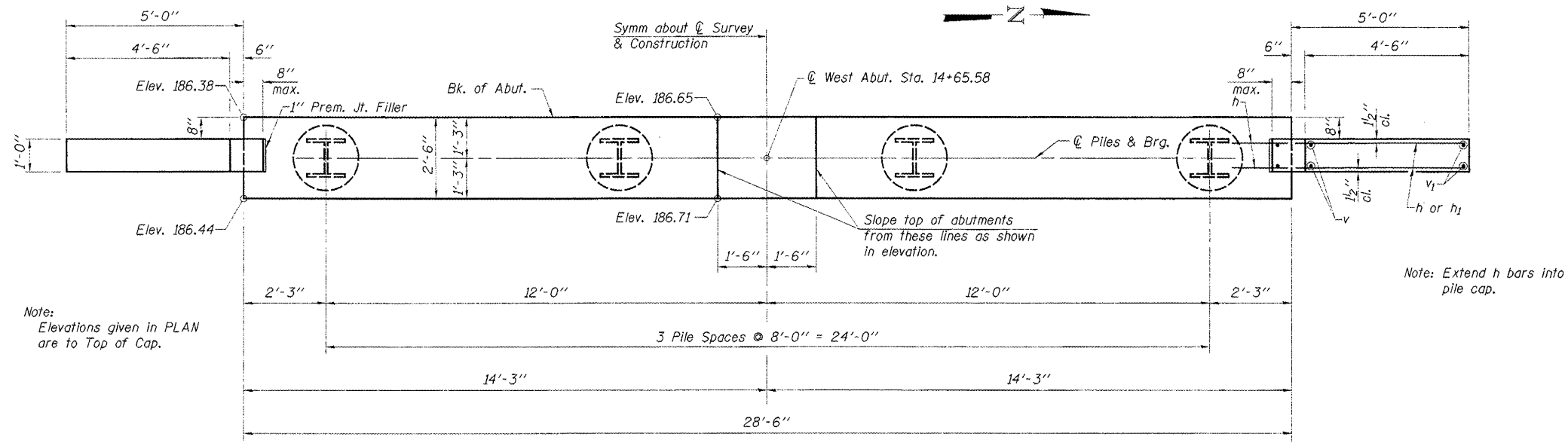
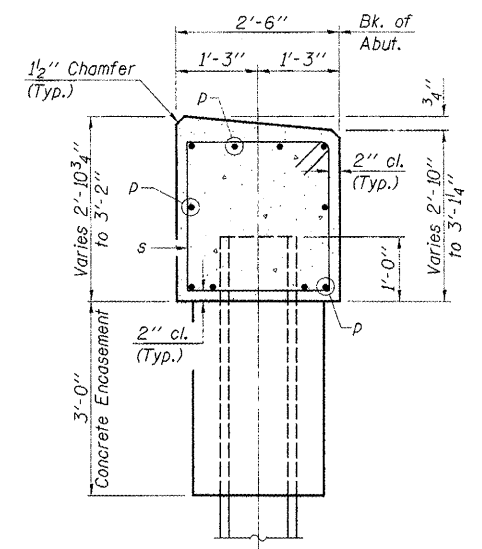


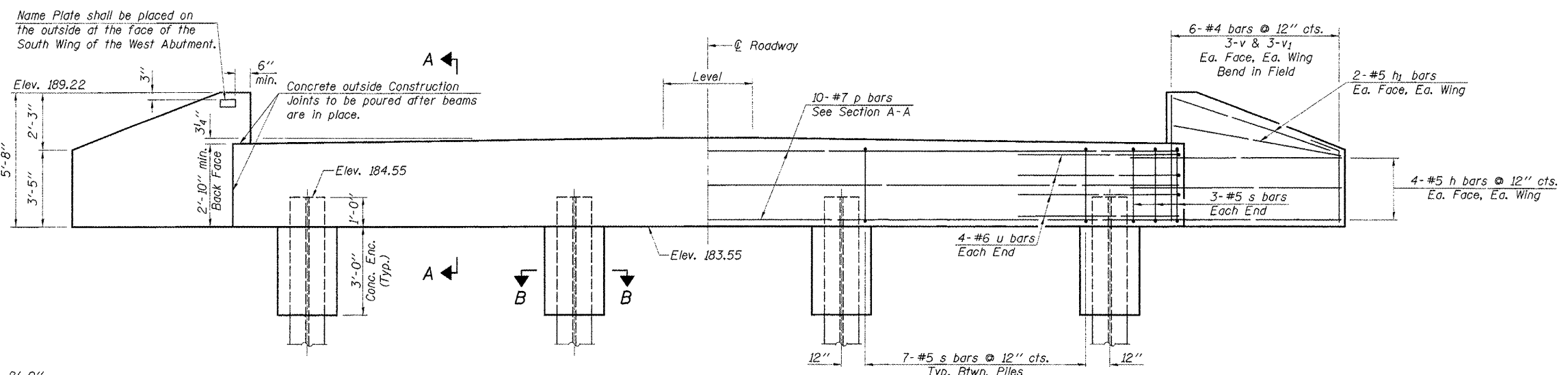
ROUTE NO.	SECTION	COUNTY	TOTAL SHEETS	SHEET NO.
T.R. 3		MARSHALL/BUREAU	14	7
ROAD DIST.		ILLINOIS	SARATOGA/MILO	
05-10116-00-BR		CONTRACT NO. 89398		
08-16114-00-BR				



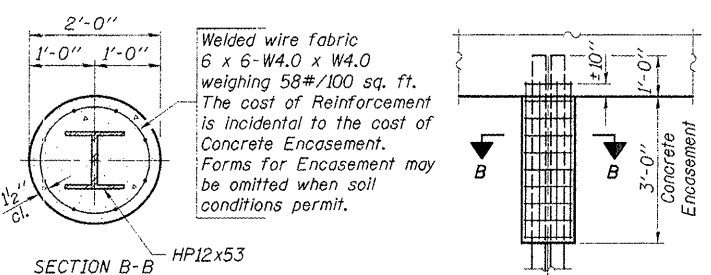
PLAN



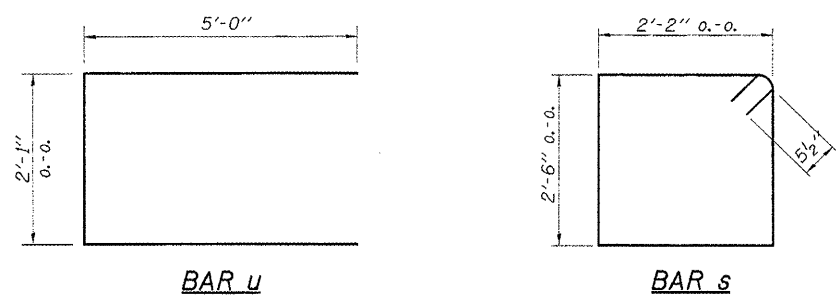
SECTION A-A
(Looking South)



ELEVATION
(Looking West)



PILE ENCASEMENT DETAIL



PILE DATA

Type.....Steel HP12x53
 No. Req'd. (W Abut.).....4
 Nominal Required Bearing.....360 Kips
 Allowable Resistance Available.....120 Kips
 Est. Length.....46 Feet/Pile

*Includes 1 Test Pile to be driven in a permanent location at the West Abutment. The test pile shall be driven to 110 percent of the Nominal Required Bearing indicated in the pile data information.

W. ABUTMENT
BILL OF MATERIAL

Bar	No.	Size	Length	Shape
h	16	#5	6'-9"	
h ₁	8	#5	5'-3"	
p	10	#7	28'-2"	
s	27	#5	10'-3"	□
u	8	#6	12'-1"	□
v	12	#4	5'-4"	
v ₁	12	#4	4'-2"	
Concrete Structures				Cu. Yd. 9.7
Reinforcement Bars				Pound 1,240
Name Plates				Each 1
Test Pile HP12x53				Each 1
Concrete Encasement				Cu. Yd. 1.4
Steel Piles HP12x53				Foot 138

See Sheet 9 for Pile Details.

DESIGNED	F.J.S.
CHECKED	J.A.M.
DRAWN	S.A.P.
CHECKED	J.A.M.

WEST ABUTMENT

SARATOGA - MILO ROAD DISTRICTS
 SECTIONS 05-10116-00-BR & 08-16114-00-BR
 MARSHALL - BUREAU COUNTIES
 STATION 15+05

4440 ASH GROVE SPRINGFIELD, IL 62711 (217) 793-8600 www.fehr-graham.com	FEHR-GRAHAM & ASSOCIATES, LLC ENGINEERING AND SCIENCE CONSULTANTS MEMBERS: I. PROFESSIONAL ENGINEERS, I. PROFESSIONAL SURVEYORS	JOB NO.: 46826 FILE: 46826WABUT.DGN DATE: 10/07/08
--	--	--