

COUNTY	ROUTE	SECTION	TOTAL SHEETS	SHEET NO.
ADAMS	FAS 1603	08-00205-00-RS	8	1

INDEX OF SHEETS:

SHEET NO.	SHEET
1	TITLE SHEET
2	SUMMARY OF QUANTITIES
	GENERAL NOTES
3	TYPICAL CROSS SECTIONS
4-7	PLAN SHEETS
8	SIDE ROAD & ENTRANCE DETAILS
	BUTT JOINT DETAIL
STANDARD	701001-02
STANDARD	701006-03
STANDARD	701301-03
STANDARD	701306-02
STANDARD	701901-01
STANDARD	BLR 24-2

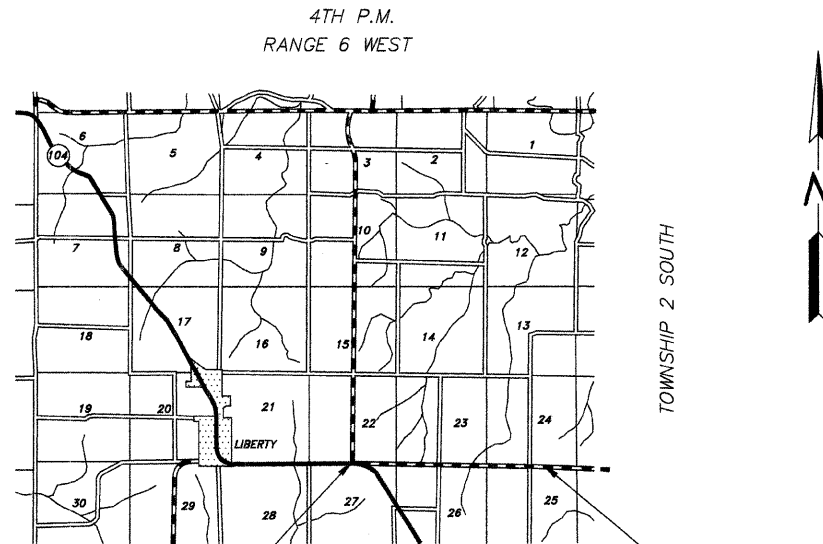
STATE OF ILLINOIS
DEPARTMENT OF TRANSPORTATION
DIVISION OF HIGHWAYS
PLANS FOR PROPOSED
SURFACE TRANSPORTATION/RURAL PROGRAM
LOCAL AGENCY PAVEMENT PRESERVATION
FAS 1603 (CH 39) SECTION 08-00205-00-RS ADAMS COUNTY
PROJECT NO. RS-1603(101) JOB NO. C-96-221-08



PROPOSED IMPROVEMENT MARKED THUS —

THESE PLANS WERE PREPARED BY ME OR BY A FULL-TIME MEMBER OF MY STAFF WORKING UNDER MY PERSONAL SUPERVISION.

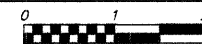
SUBMITTED BY *Rudolph A. Klump* DATE 11-18-08
 COUNTY ENGINEER
 LICENSE NO. 062-032961
 LIC. EXPIRES 11/30/2009



STATION 0+00
 SEC. 08-00205-00-RS
 BEGINS

STATION 105+60
 SEC. 08-00205-00-RS
 ENDS

LOCATION MAP



FUNCTIONAL CLASS: MAJOR COLLECTOR (NON-URBAN)
 ADT=275

PROPOSED IMPROVEMENT CONSISTS OF PLACING 1 1/2" POLYMERIZED HOT-MIX ASPHALT SURFACE COURSE, MIX "C", N50 OVER 3/4" OF LEVELING BINDER (MACHINE METHOD) N50 ON THE EXISTING 22' ROADWAY WITH OTHER MISCELLANEOUS CONSTRUCTION

UTILITIES:

J.U.L.I.E.	1-800-892-0123
AMERITECH	QUINCY, IL
ADAMS RURAL ELECTRICAL CO-OP	CAMP POINT, IL
ABS WATER DISTRICT	GOLDEN, IL
McLEOD USA	SPRINGFIELD, IL

GROSS LENGTH:

STA. 0+00.00 TO STA. 105+60.00 = 10,560.00 FT.

NET LENGTH TO BE IMPROVED: 10,560.00 FT. = 2.000 MILES

APPROVED <u>November 18</u> 2008	
<u><i>Rudolph A. Klump</i></u>	COUNTY ENGINEER
PASSED <u>December 8</u> 2008	
<u><i>Ron Dehnbauer</i></u>	DISTRICT ENGINEER OF CONSTRUCTION
PASSED <u>DEC 9</u> 2008	
<u><i>Jimmy F. ...</i></u>	DISTRICT ENGINEER OF LOCAL ROADS AND STREETS
RELEASING FOR BID BASED ON LIMITED REVIEW <u>DEC 8</u> 2008	
<u><i>Roger J. Dunsell</i></u>	DEPUTY DIRECTOR OF HIGHWAYS REGION FOUR ENGINEER
STATE OF ILLINOIS DEPARTMENT OF TRANSPORTATION	