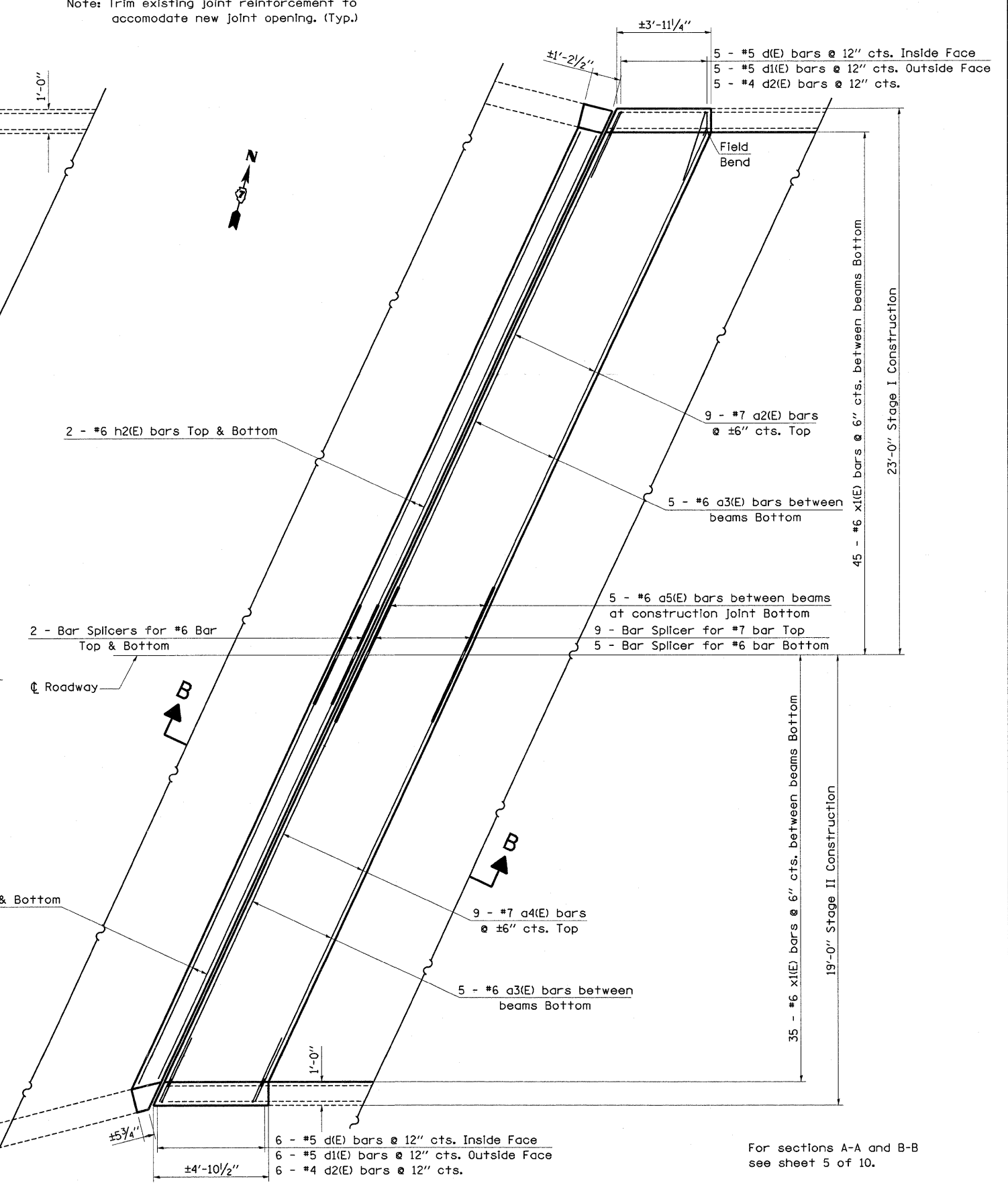
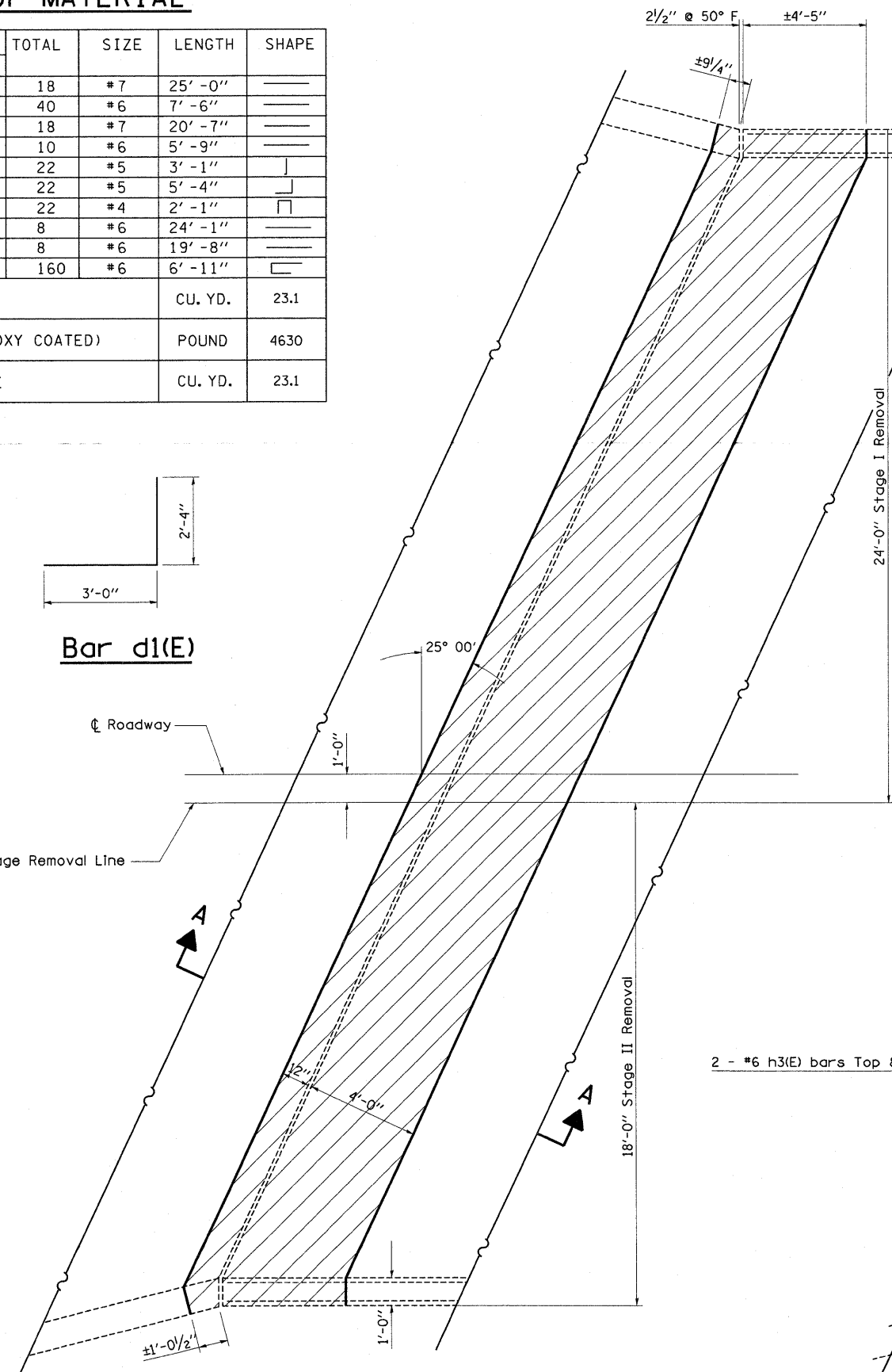
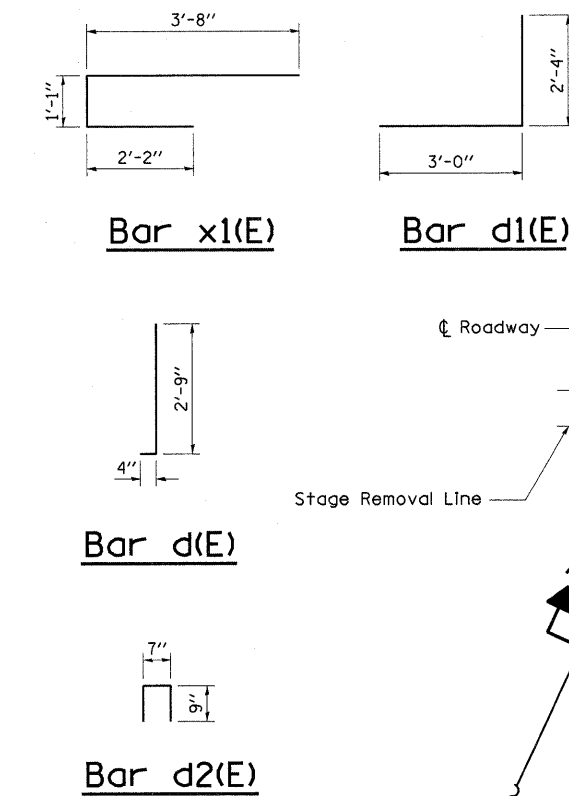


### BILL OF MATERIAL

BAR	NUMBER OF BARS		TOTAL	SIZE	LENGTH	SHAPE
	STAGE I	STAGE II				
a2(E)	18		18	#7	25'-0"	—
a3(E)	20	20	40	#6	7'-6"	—
a4(E)		18	18	#7	20'-7"	—
a5(E)	10		10	#6	5'-9"	—
d(E)	11	11	22	#5	3'-1"	┘
d1(E)	11	11	22	#5	5'-4"	┘
d2(E)	11	11	22	#4	2'-1"	┘
h2(E)	8		8	#6	24'-1"	—
h3(E)		8	8	#6	19'-8"	—
x1(E)	90	70	160	#6	6'-11"	┘
CONCRETE REMOVAL					CU. YD.	23.1
REINFORCEMENT BARS (EPOXY COATED)					POUND	4630
CONCRETE SUPERSTRUCTURE					CU. YD.	23.1

Note: Trim existing joint reinforcement to accommodate new joint opening. (Typ.)



For sections A-A and B-B see sheet 5 of 10.