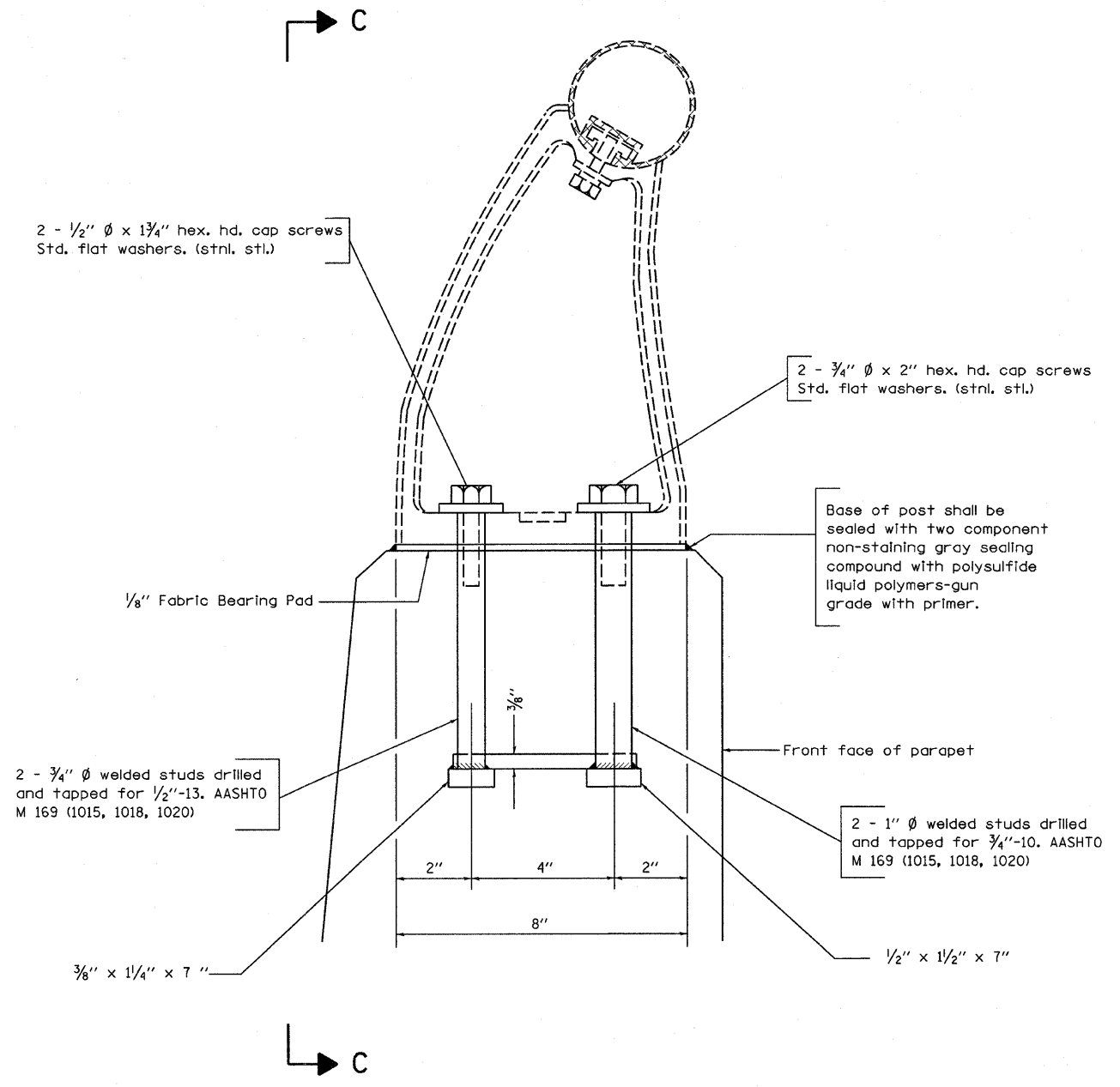


VIEW C-C



Note: New Rail Post anchorage devices will be required at each location where posts are connected to new construction. Cost shall be included with Concrete Superstructure.

FILE NAME =		USER NAME = swartzrw	DESIGNED -	REVISED -	STATE OF ILLINOIS DEPARTMENT OF TRANSPORTATION	RAIL SUPPORT ANCHOR DETAILS SN. 026-0005 AND 026-0006		F.A.I. RTE.	SECTION	COUNTY	TOTAL SHEETS	SHEET NO.
c:\pwwork\pwwid\swartzrw\dms36288\th		eladesign-94993.dgn	DRAWN -	REVISED -				70	D-7 BRIDGE DECK REPAIRS	FAYETTE	59	31
PLOT SCALE = 20.0000 ' / IN.		CHECKED -	REVISED -	CONTRACT NO. 94993								
PLOT DATE = 10/17/2008		DATE -	REVISED -	ILLINOIS FED. AID PROJECT								
					SCALE: N/A	SHEET NO. 8 OF 10 SHEETS	STA.	TO STA.				