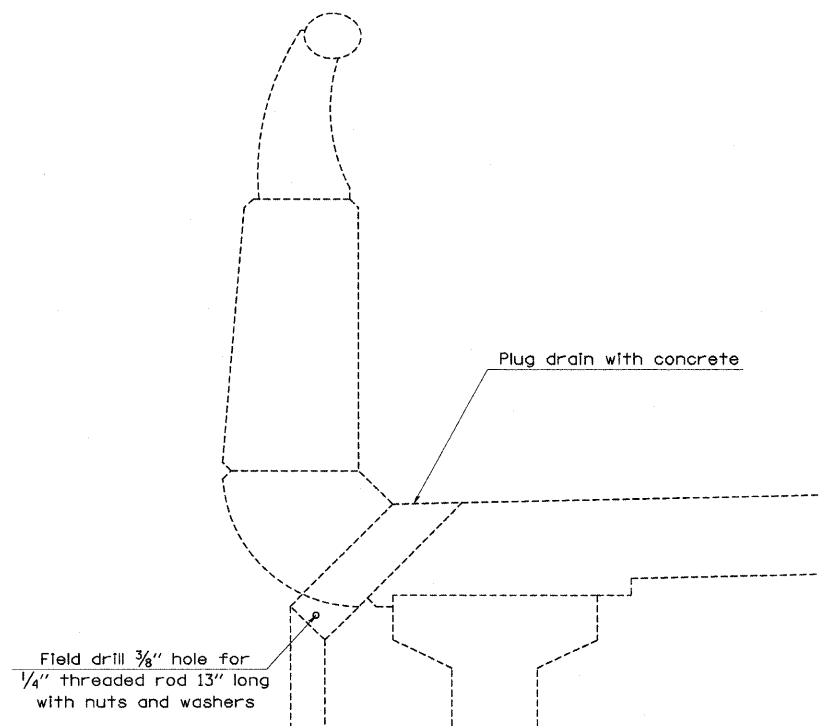
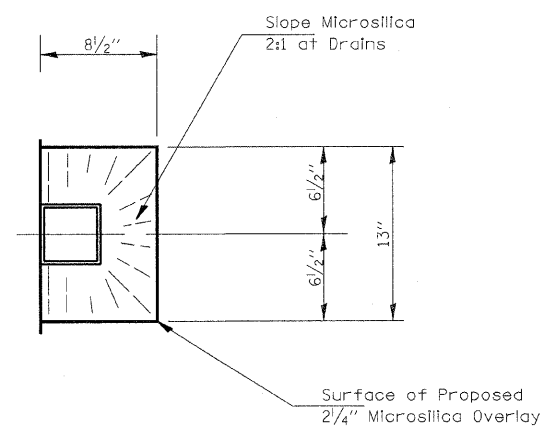


- Existing Drain to Be Plugged
- Existing Drain to Remain Open



DRAINS TO BE PLUGGED DETAIL

Note: See "Total Bill of Materials for each structure for quantities."



PLAN VIEW OF EXISTING DRAIN TO REMAIN OPEN

FILE NAME =	USER NAME = swartzw	DESIGNED -	REVISED -	STATE OF ILLINOIS DEPARTMENT OF TRANSPORTATION	EXISTING DECK DRAINS TO BE PLUGGED SN. 026-0007 (EB)			SHEET NO. 8 12 SHEETS	
cd:\pwwork\FWIDOT\SWARTZRW\dms36208\ch...	eladesign-94993.dgn	DRAWN -	REVISED -		F.A.I. RTE.	SECTION	COUNTY	TOTAL SHEETS	SHEET NO.
	PLOT SCALE = 20,0000' / IN.	CHECKED -	REVISED -		70	D-7 BRIDGE DECK REPAIRS	FAYETTE	59	41
	PLOT DATE = 10/17/2008	DATE -	REVISED -		SCALE: N/A SHEET NO. 8 OF 12 SHEETS STA. TO STA.		CONTRACT NO. 94993		
				FED. ROAD DIST. NO. ILLINOIS FED. AID PROJECT					