

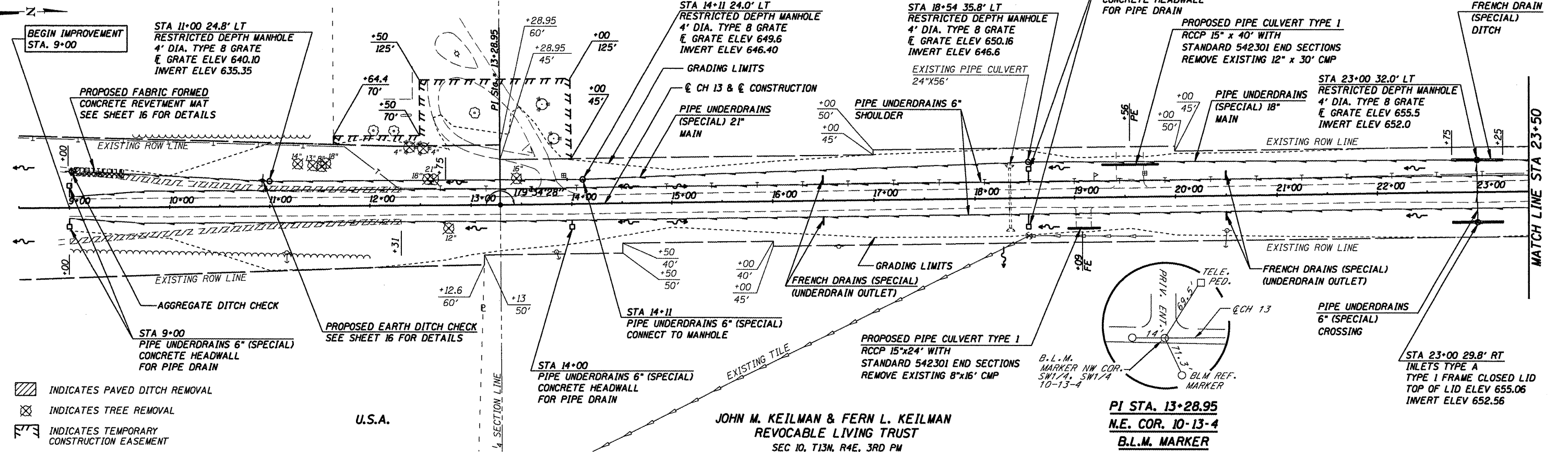
SEE SHEET 21 FOR DETAILS OF ENTRANCE LT STA 13+77.5

SEC 9, T13N, R4E, 3RD PM

WININGS

STA 18+54
PIPE UNDERDRAINS 6" (SPECIAL)
CONCRETE HEADWALL
FOR PIPE DRAIN

FRENCH DRAIN
(SPECIAL)
DITCH



DATE	
BY	
REVISIONS	
PLANNED	
NOTED	
ALIGNED	
CHECKED	
DATE	
NO.	

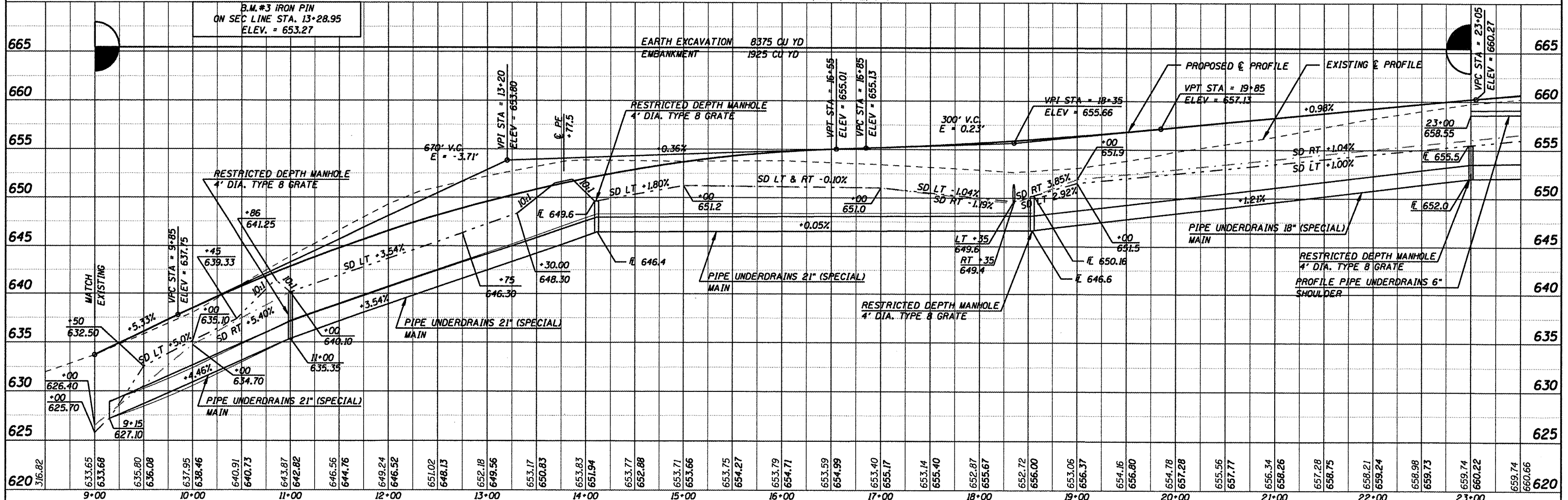
- INDICATES PAVED DITCH REMOVAL
- INDICATES TREE REMOVAL
- INDICATES TEMPORARY CONSTRUCTION EASEMENT

U.S.A.

JOHN M. KEILMAN & FERN L. KEILMAN
REVOCABLE LIVING TRUST
SEC 10, T13N, R4E, 3RD PM

PI STA. 13+28.95
N.E. COR. 10-13-4
B.L.M. MARKER

DATE	
BY	
REVISIONS	
PLANNED	
NOTED	
ALIGNED	
CHECKED	
DATE	
NO.	



CUMMINS ENGINEERING CORPORATION JOB = 2096.1 FILE NAME = pp01001.dgn PLDT SCALE = 100.0000' / IN. PLDT DATE = 12/22/2008	DESIGNED - NAK	REVISED -	MOULTRIE COUNTY BETHANY FINDLAY RD. IMPROVEMENTS	PLAN & PROFILE - CH 13 SCALE: SHEET NO. OF SHEETS STA. 9+00 TO STA. 23+50	F.A.S. SECTION COUNTY TOTAL SHEETS SHEET NO. 650 02-00062-01-PV MOULTRIE 44 8 CH 13, BETHANY FINDLAY RD. CONTRACT NO. 95568 FED. ROAD DIST. NO. [ILLINOIS] FED. AID PROJECT
	DRAWN - AJH	REVISED -			
	CHECKED - NAK	REVISED -			
	DATE - 10/08/2008	REVISED -			