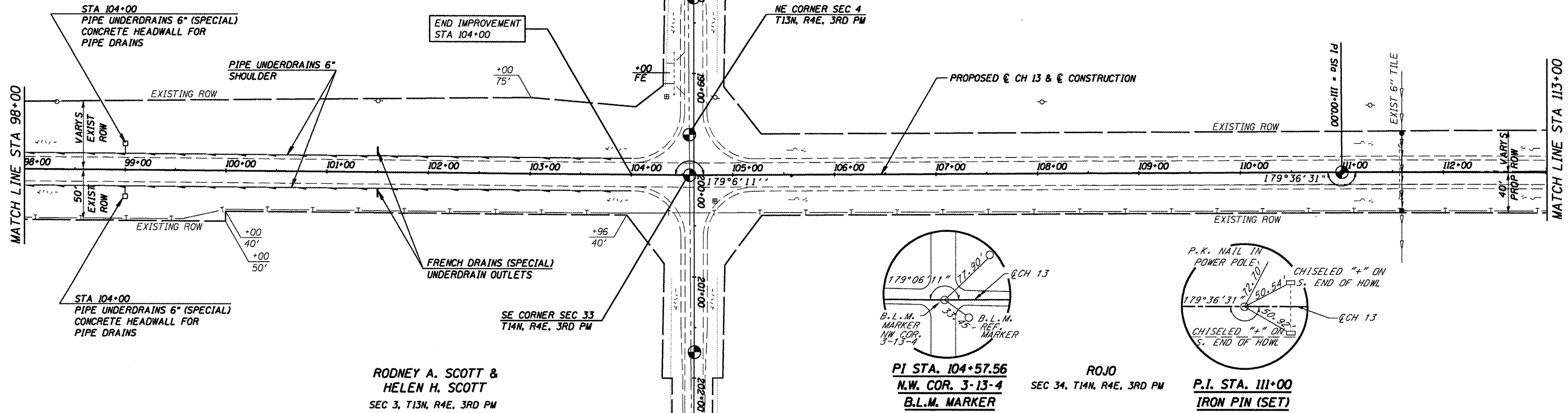


DATE	
BY	
REVISIONS	
NO.	
DESCRIPTION	
DATE	
BY	
NO.	
DESCRIPTION	
DATE	
BY	
NO.	
DESCRIPTION	

DATE	
BY	
REVISIONS	
NO.	
DESCRIPTION	
DATE	
BY	
NO.	
DESCRIPTION	
DATE	
BY	
NO.	
DESCRIPTION	

SEC 4, T13N, R4E, 3RD PM
WALTER GLEN ROBINSON TRUST
(TRACT 2)

SEC 33, T14N, R4E, 3RD PM
TERRY L. HOGG



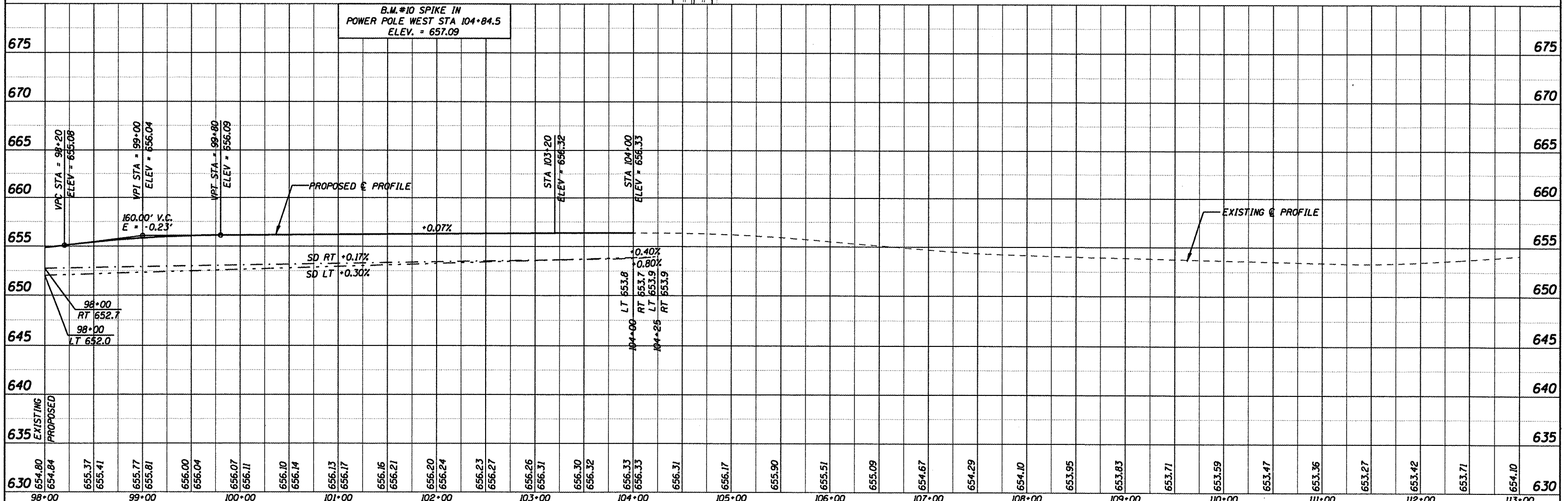
RODNEY A. SCOTT &
HELEN H. SCOTT
SEC 3, T13N, R4E, 3RD PM

PI STA. 104+57.56
N.W. COR. 3-13-4
B.L.M. MARKER

ROJO
SEC 34, T14N, R4E, 3RD PM

P.I. STA. 111+00
IRON PIN (SET)

B.M. #10 SPIKE IN
POWER POLE WEST STA 104+84.5
ELEV. = 657.09



CUMMINS ENGINEERING CORPORATION	JOB = 2096.1	DESIGNED - NAK	REVISED -	MOULTRIE COUNTY BETHANY FINDLAY RD. IMPROVEMENTS	PLAN & PROFILE - CH 13		F.A.S. RTE 650	SECTION	COUNTY	TOTAL SHEETS	SHEET NO.
	FILE NAME = pp07081.dgn	DRAWN - AJH	REVISED -		02-00062-01-PV	MOULTRIE		44	14		
	PLOT SCALE = 1/8" = 1'-0"	CHECKED - NAK	REVISED -		CH 13, BETHANY FINDLAY RD.	CONTRACT NO. 95568					
	PLOT DATE = 12/22/2008	DATE - 10/08/2008	REVISED -		FED. ROAD DIST. NO.	ILLINOIS FED. AID PROJECT					