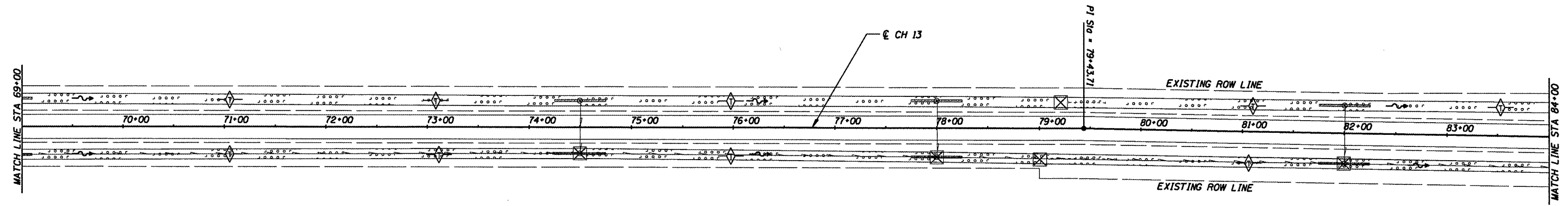


LEGEND

	INLET & PIPE PROTECTION
	TEMPORARY DITCH CHECK
	PROPOSED CULVERT
	SEEDING, CLASS 2 (SPECIAL)

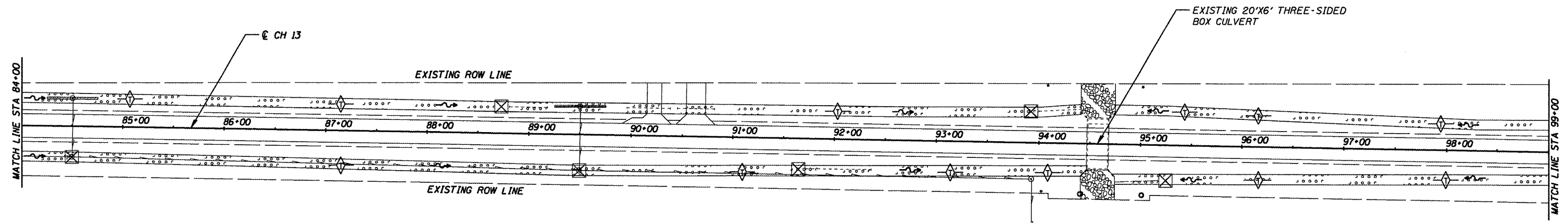
STA 69+00 TO STA 84+00

SEEDING CLASS 2 (SPECIAL)	0.69 ACRES
TEMPORARY EROSION CONTROL SEEDING	69 POUNDS
TEMPORARY DITCH CHECK	9 EACH
INLET AND PIPE PROTECTION	5 EACH



STA 84+00 TO STA 99+00

SEEDING CLASS 2 (SPECIAL)	0.66 ACRES
TEMPORARY EROSION CONTROL SEEDING	66 POUNDS
TEMPORARY DITCH CHECK	12 EACH
INLET AND PIPE PROTECTION	6 EACH



CUMMINS ENGINEERING CORPORATION

JOB = 2096.1	DESIGNED - NAK	REVISED -
FILE NAME = 096erosion.dgn	DRAWN - AJH	REVISED -
PLOT SCALE = 100.000 ' / IN.	CHECKED - NAK	REVISED -
PLOT DATE = 12/22/2008	DATE - 10/15/2008	REVISED -

**MOULTRIE COUNTY
BETHANY FINDLAY RD. IMPROVEMENTS**

EROSION CONTROL PLAN			
SCALE:	SHEET NO. OF SHEETS	STA. 69+00 TO STA. 99+00	

F.A.S. RTE. 650	SECTION 02-00062-01-PV	COUNTY MOULTRIE	TOTAL SHEETS 44	SHEET NO. 19
CH 13, BETHANY FINDLAY RD.		CONTRACT NO. 95568		
FED. ROAD DIST. NO. [ILLINOIS] FED. AID PROJECT				