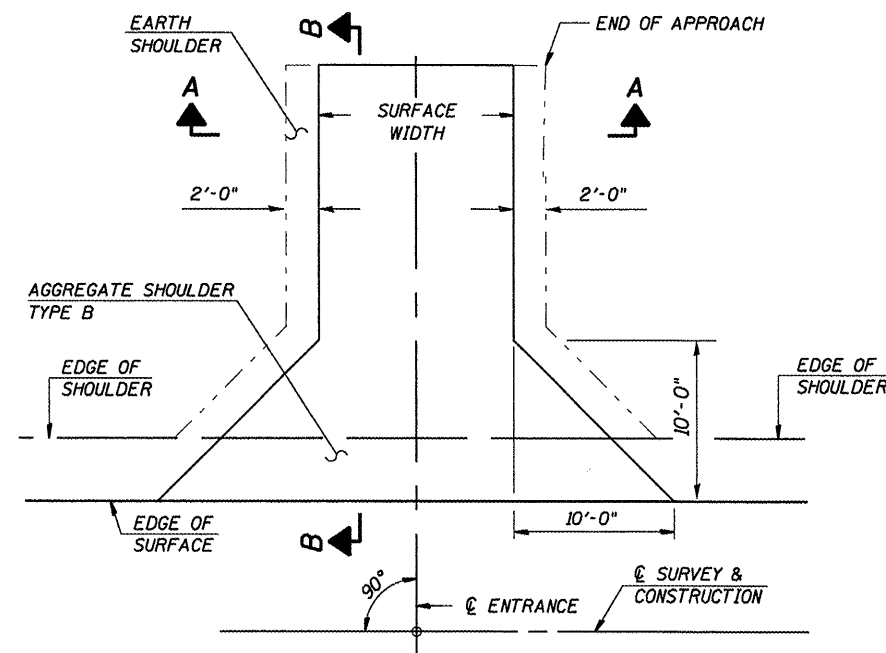
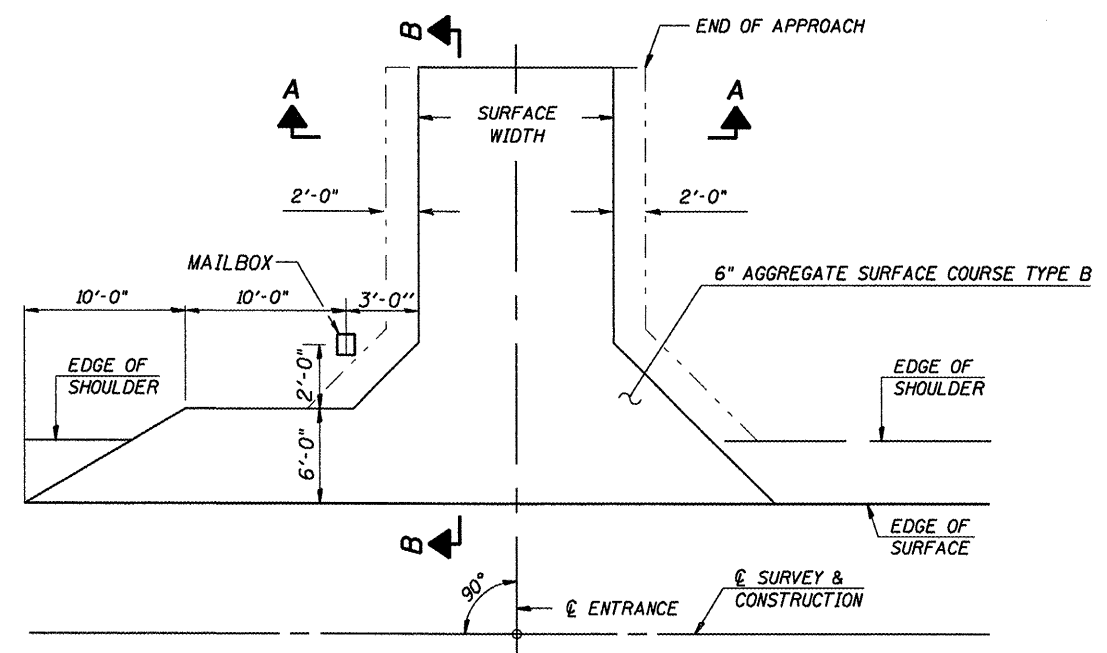


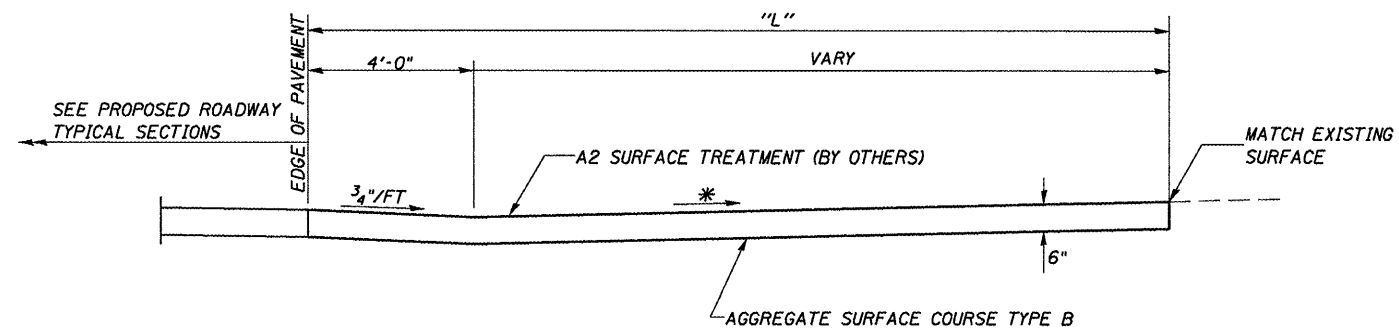
**PRIVATE ENTRANCE DETAIL**



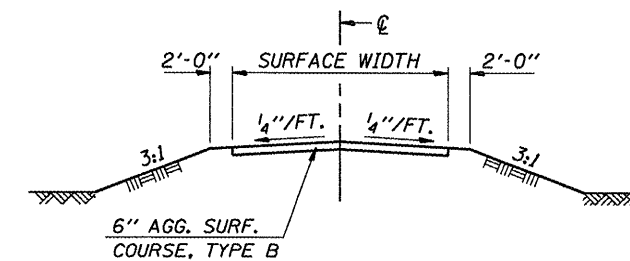
**FIELD ENTRANCE DETAIL**



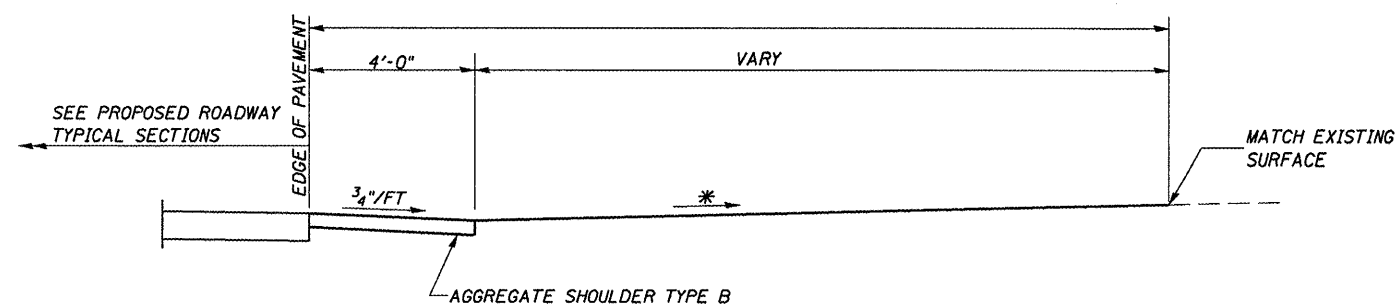
**ENTRANCE/MAILBOX TURNOUT DETAIL A**



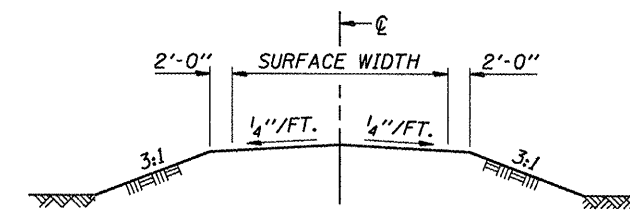
**SECTION B-B FOR PRIVATE ENTRANCE**



**SECTION A-A PE**



**SECTION B-B FOR FIELD ENTRANCE**



**SECTION A-A FE**

\* SEE CROSS SECTIONS FOR SLOPE

**CUMMINS  
ENGINEERING  
CORPORATION**

JOB = 2096.1  
FILE NAME = 2096ent.dgn  
PLOT SCALE = 2.0000 "/>

DESIGNED - NAK  
DRAWN - AJH  
CHECKED - NAK  
DATE - 10/08/2008

REVISED -  
REVISED -  
REVISED -  
REVISED -

**MOULTRIE COUNTY  
BETHANY FINDLAY RD. IMPROVEMENTS**

**ENTRANCE AND MAILBOX TURNOUT DETAILS  
STA 9+00 TO STA 53+00**

SCALE: SHEET NO. OF SHEETS STA. TO STA.

F.A.S. RTE.	SECTION	COUNTY	TOTAL SHEETS	SHEET NO.
650	02-00062-01-PV	MOULTRIE	44	22
CH 13, BETHANY FINDLAY RD.		CONTRACT NO. 95568		
FED. ROAD DIST. NO. [ILLINOIS] FED. AID PROJECT				