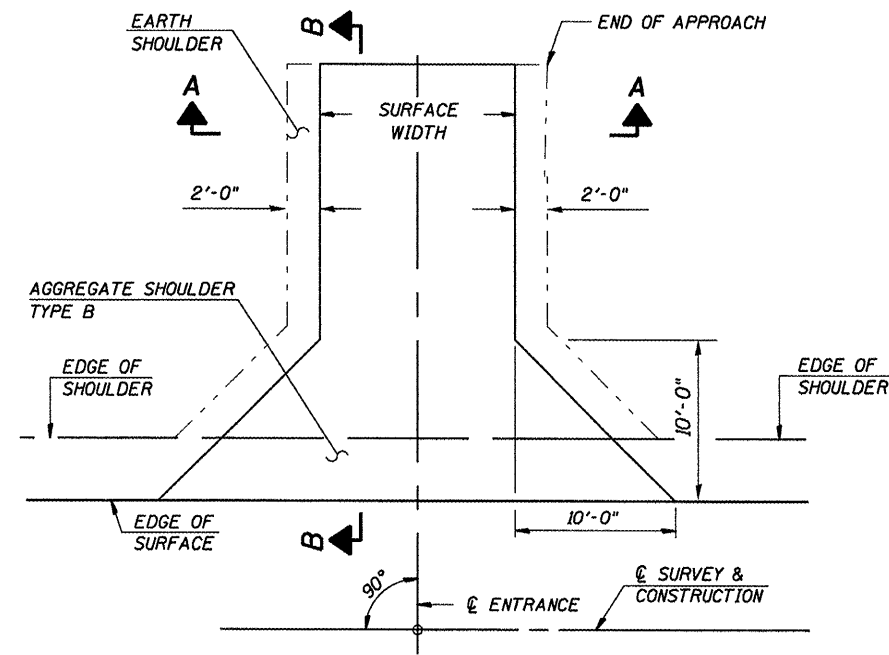
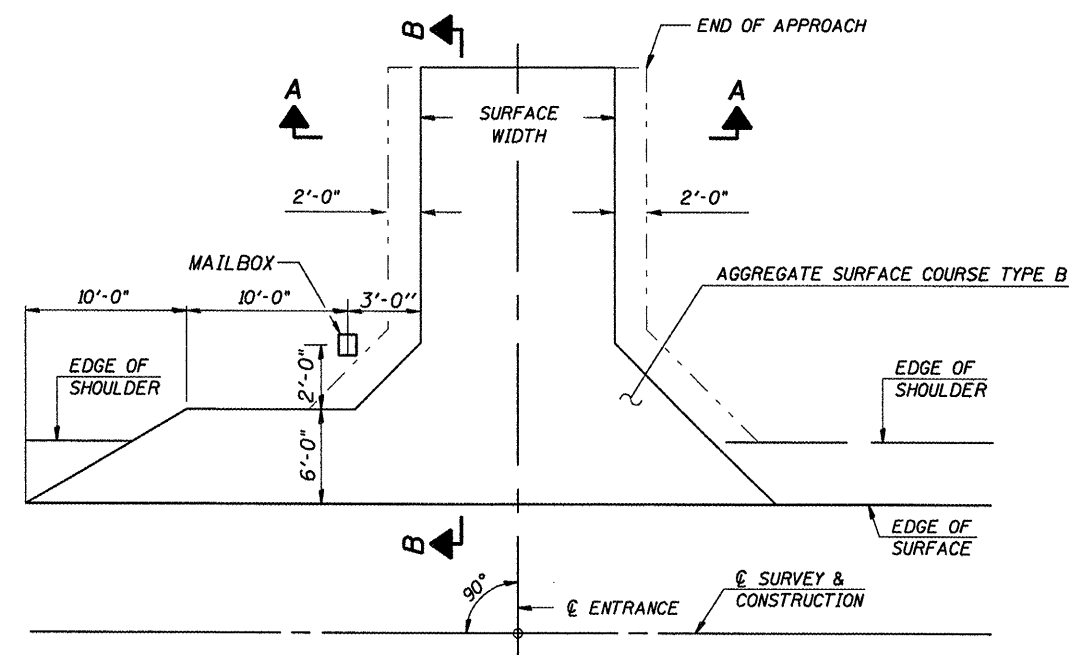


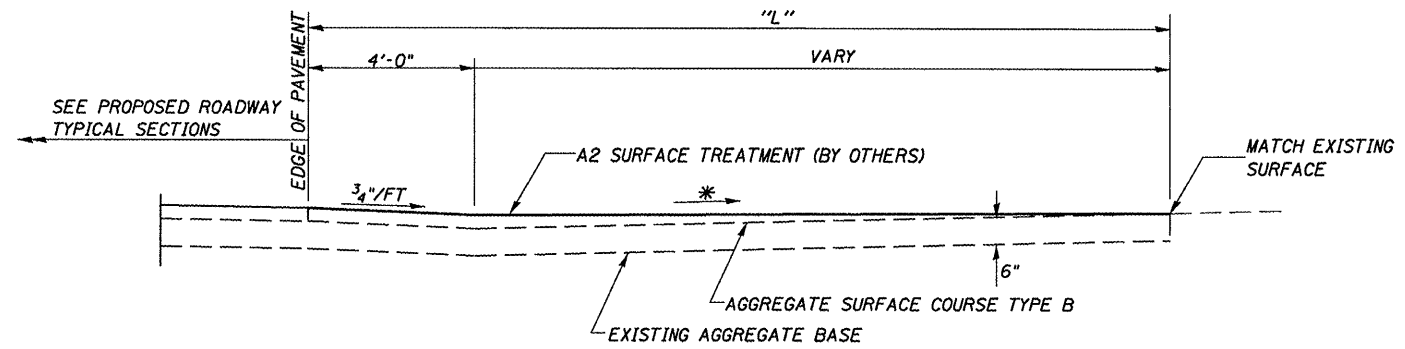
PRIVATE ENTRANCE DETAIL



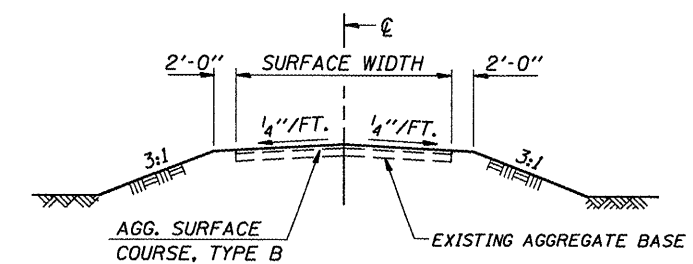
FIELD ENTRANCE DETAIL



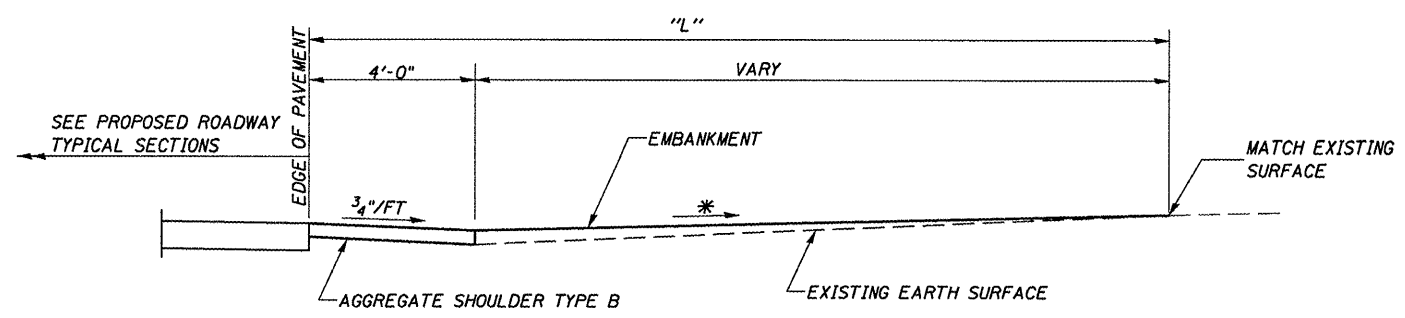
ENTRANCE/MAILBOX TURNOUT DETAIL A



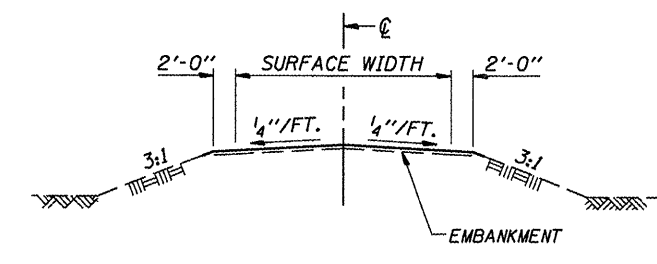
SECTION B-B FOR PRIVATE ENTRANCE



SECTION A-A PE



SECTION B-B FOR FIELD ENTRANCE



SECTION A-A FE

* SEE CROSS SECTIONS FOR SLOPE

CUMMINS ENGINEERING CORPORATION

JOB = 2096.1	DESIGNED - NAK	REVISED -
FILE NAME = 2096ent.dgn	DRAWN - AJH	REVISED -
PLOT SCALE = 2,0000' / IN.	CHECKED - NAK	REVISED -
PLOT DATE = 12/22/2008	DATE - 10/08/2008	REVISED -

**MOULTRIE COUNTY
BETHANY FINDLAY RD. IMPROVEMENTS**

**ENTRANCE AND MAILBOX TURNOUT DETAILS
STA 53+00 TO STA 104+00**

F.A.S. RTE. 650	SECTION 02-00062-01-PV	COUNTY MOULTRIE	TOTAL SHEETS 44	SHEET NO. 23
CH 13, BETHANY FINDLAY RD.		CONTRACT NO. 95568		
FED. ROAD DIST. NO. [ILLINOIS] FED. AID PROJECT				

SCALE: SHEET NO. OF SHEETS STA. TO STA.