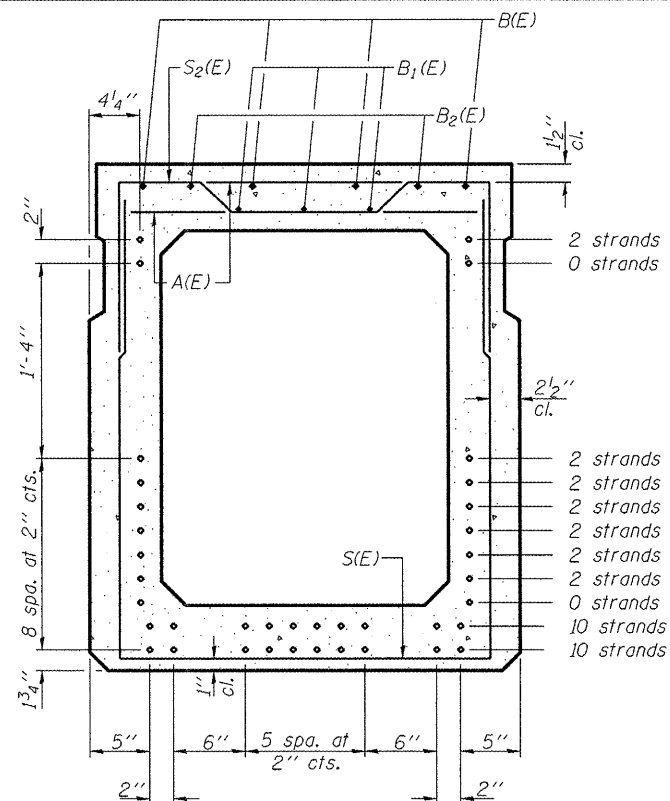


SECTION C-C

2'-2"

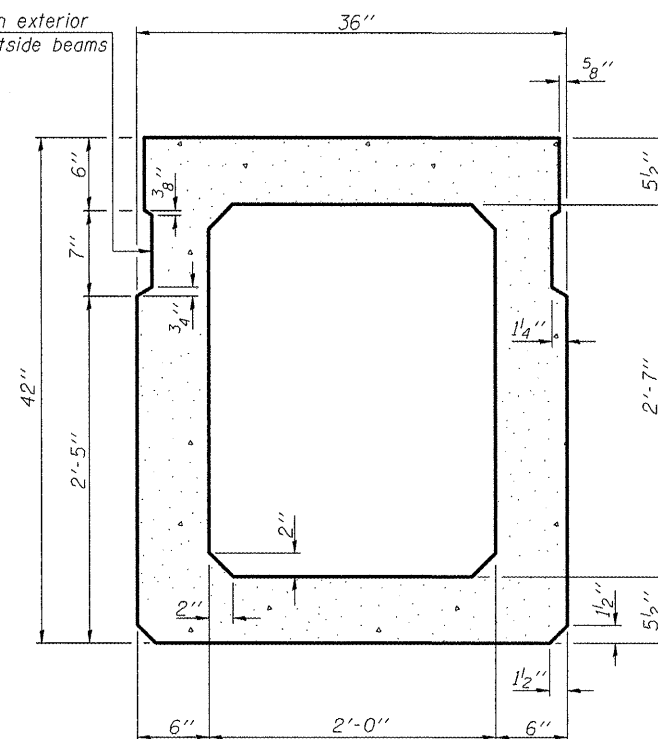


SECTION A-A

(Showing reinforcement and permissible strand locations)

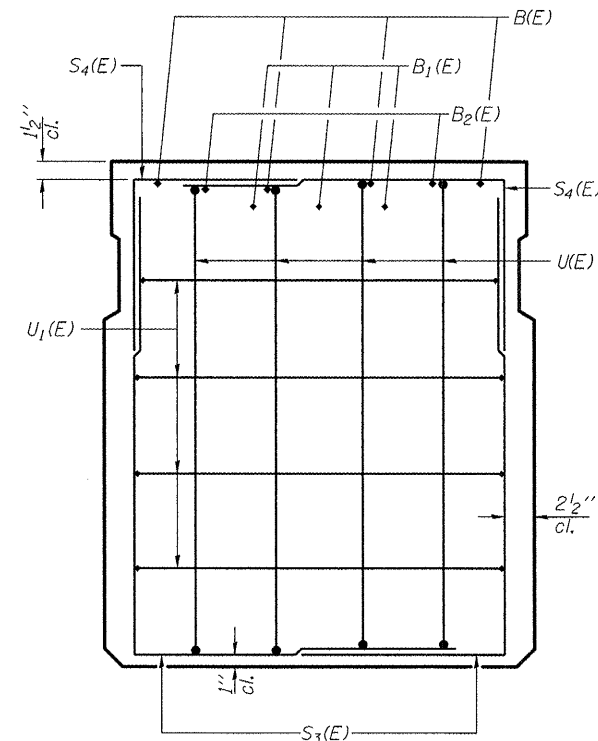
Note: Place the number of strands specified in each row symmetrically about the centerline of beam in the permissible strand locations shown.

Omit key on exterior face of outside beams

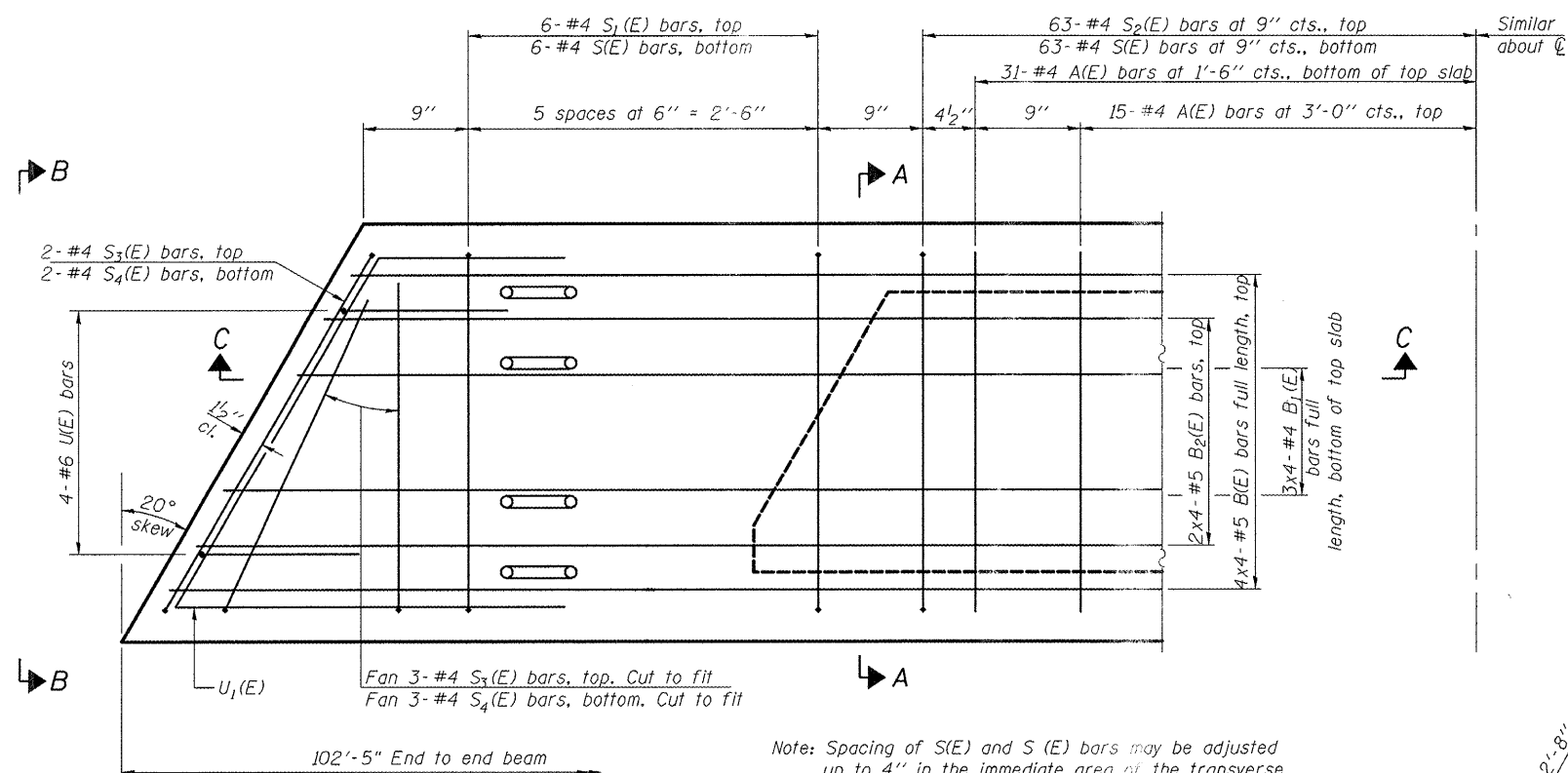


SECTION A-A

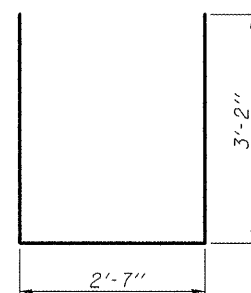
(Showing dimensions)



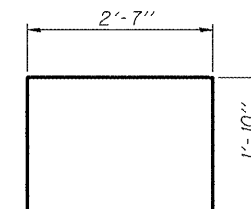
VIEW B-B



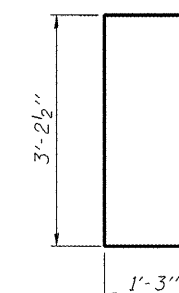
Note: Spacing of S(E) and S(E) bars may be adjusted up to 4" in the immediate area of the transverse tie diaphragms to miss the block outs for the transverse ties.



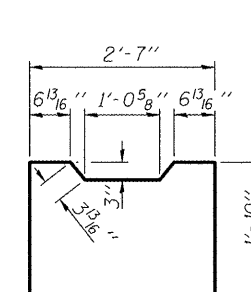
BAR S(E)



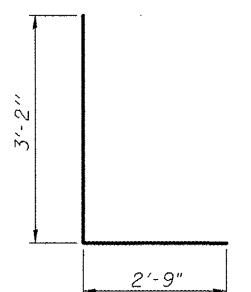
BAR S1(E)



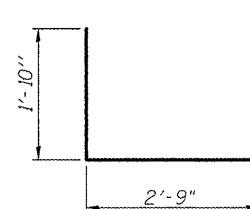
BAR U(E)



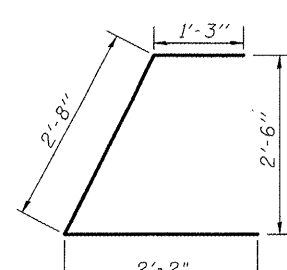
BAR S2(E)



BAR S3(E)



BAR S4(E)



BAR U1(E)

BAR LIST ONE BEAM ONLY

(For information only)

Bar	No.	Size	Length	Shape
A(E)	96	#4	2'-7"	—
B(E)	16	#5	27'-2"	—
B1(E)	12	#4	26'-10"	—
B2(E)	8	#5	27'-2"	—
S(E)	138	#4	8'-11"	┌
S1(E)	12	#4	6'-3"	┌
S2(E)	126	#4	6'-6"	┌
S3(E)	10	#4	5'-11"	┌
S4(E)	10	#4	4'-7"	┌
U(E)	8	#6	5'-9"	┌
U1(E)	8	#4	6'-1"	┌

Notes:

- See sheet 4 of 6 for additional details and Bill of Material.
- Bars indicate thus 3x4- #4 etc. Indicates 3 lines of bars with 4 lengths per line

42" x 36" DECK BEAM
BLUFF ROAD OVER
PRAIRIE DU ROCHER CRK.
SN 079-3072

DESIGNED	ASW
CHECKED	BWP
DRAWN	ASW
CHECKED	BWP

**THOUVENOT,
WADE &
MOERCHEN, INC.**

SWANSEA • WATERLOO • EDWARDSVILLE • CARBONDALE • ST. CHARLES

CORPORATE OFFICE
4940 Old Collinsville Road
Swansea, Illinois 62226
Tel: 618.624.4488
Fax: 618.624.6688



SHEET NO. 3	F.A.S. RTE.	SECTION	COUNTY	TOTAL SHEETS	SHEET NO.
	1857	99-00073-00-BR	RANDOLPH	11	7
7 SHEETS	CONTRACT NO. 97363				
FED. ROAD DIST. NO.		ILLINOIS FED. AID PROJECT			